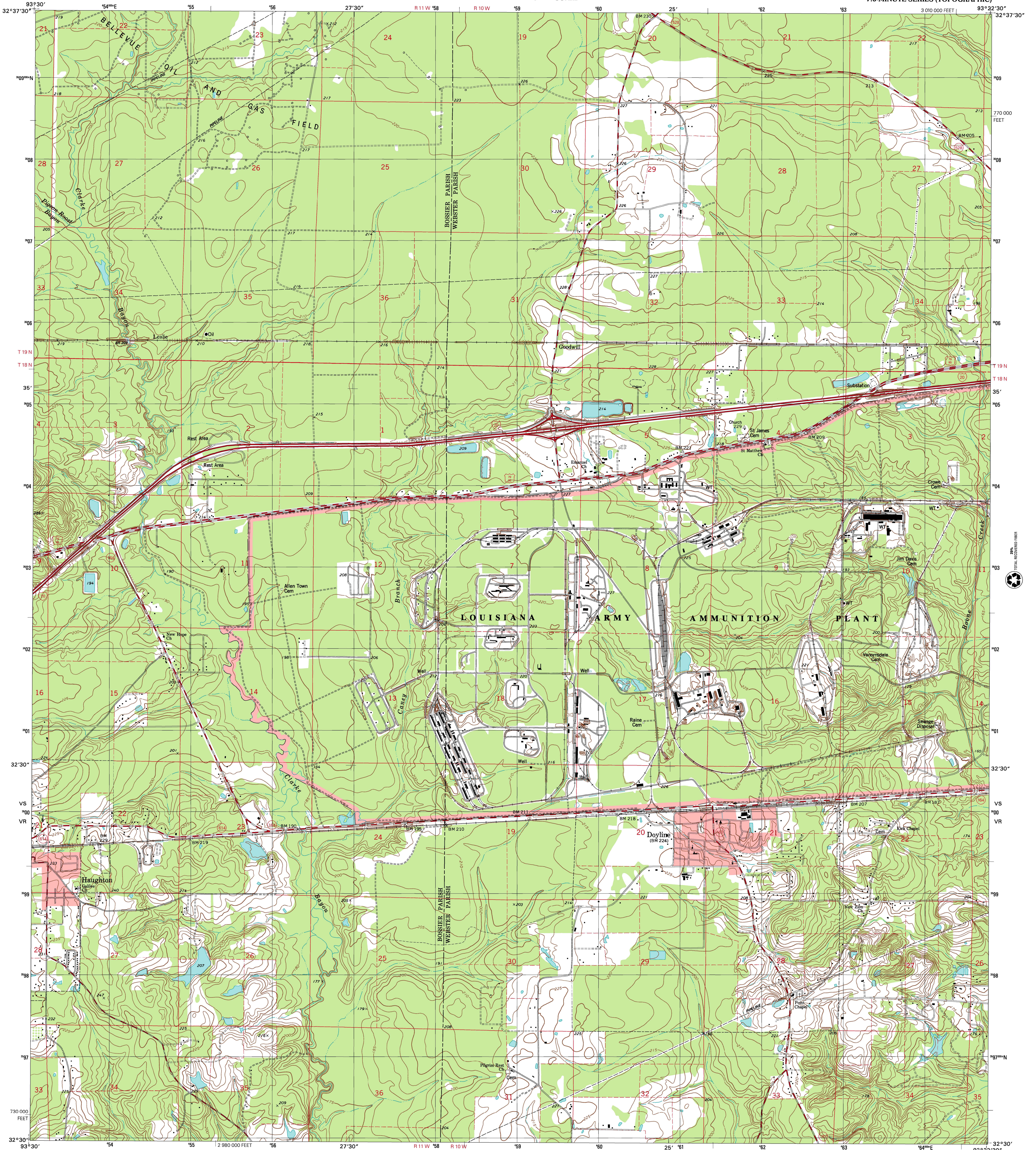




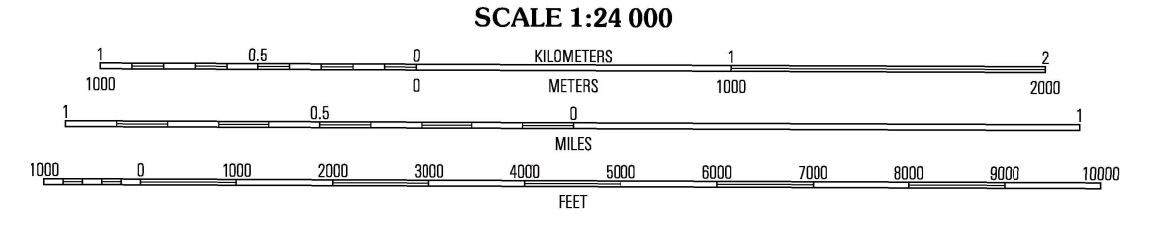
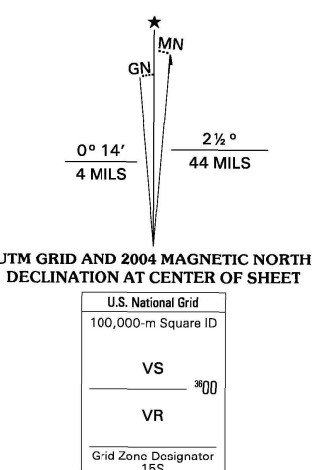
U.S. DEPARTMENT OF THE INTERIOR
U.S. GEOLOGICAL SURVEY

UNIVERSITY OF LOUISIANA AT LAFAYETTE
NATIONAL AERONAUTICS AND SPACE ADMINISTRATION
REGIONAL APPLICATION CENTER
LOUISIANA ARMY NATIONAL GUARD

DOYLINE QUADRANGLE
LOUISIANA
7.5-MINUTE SERIES (TOPOGRAPHIC)



Produced by the United States Geological Survey
Topography compiled 1976. Planimetry derived from imagery taken 1958 and other sources. Public Land Survey System and survey control current as of 1976. Boundaries current as of 2004
North American Datum of 1983 (NAD 83). Projection and 1000-meter grid: Universal Transverse Mercator, zone 15S
10 000-foot ticks: Louisiana Coordinate System of 1983 (north) zone
North American Datum of 1927 (NAD 27) is shown by dashed corner ticks. The values of the shift between NAD 83 and NAD 27 for 7.5-minute intersections are obtainable from National Geodetic Survey NADCON software
There may be private inholdings within the boundaries of the National of State reservations shown on this map
Houses of worship, schools, and other labeled buildings verified 1978



CONTOUR INTERVAL 5 FEET
NATIONAL GEODETIC VERTICAL DATUM OF 1929
TO CONVERT FROM FEET TO METERS, MULTIPLY BY 0.3048

THIS MAP COMPLIES WITH NATIONAL MAP ACCURACY STANDARDS
FOR SALE BY U.S. GEOLOGICAL SURVEY, P.O. BOX 25286, DENVER, COLORADO 80225
AND LOUISIANA DEPARTMENT OF TRANSPORTATION AND DEVELOPMENT, BATON ROUGE, LOUISIANA 70804
A FOLDER DESCRIBING TOPOGRAPHIC MAPS AND SYMBOLS IS AVAILABLE ON REQUEST



ROAD CLASSIFICATION

Primary highway hard surface	Light-duty road, hard or improved surface
Secondary highway hard surface	Unimproved road
Interstate Route	U.S. Route
	State Route

1	2	3	1 Bodine Lake
4	5	6	2 Hottan
7	8	9	3 Minden North
10	11	12	4 Enwood
13	14	15	5 Minden South
16	17	18	6 Sligo
19	20	21	7 Kincaid
22	23	24	8 Hulin

ADJOINING 7.5' QUADRANGLES
LA 30C

DOYLINE, LA
1998
NIMA 7349 III SW-SERIES V885

