

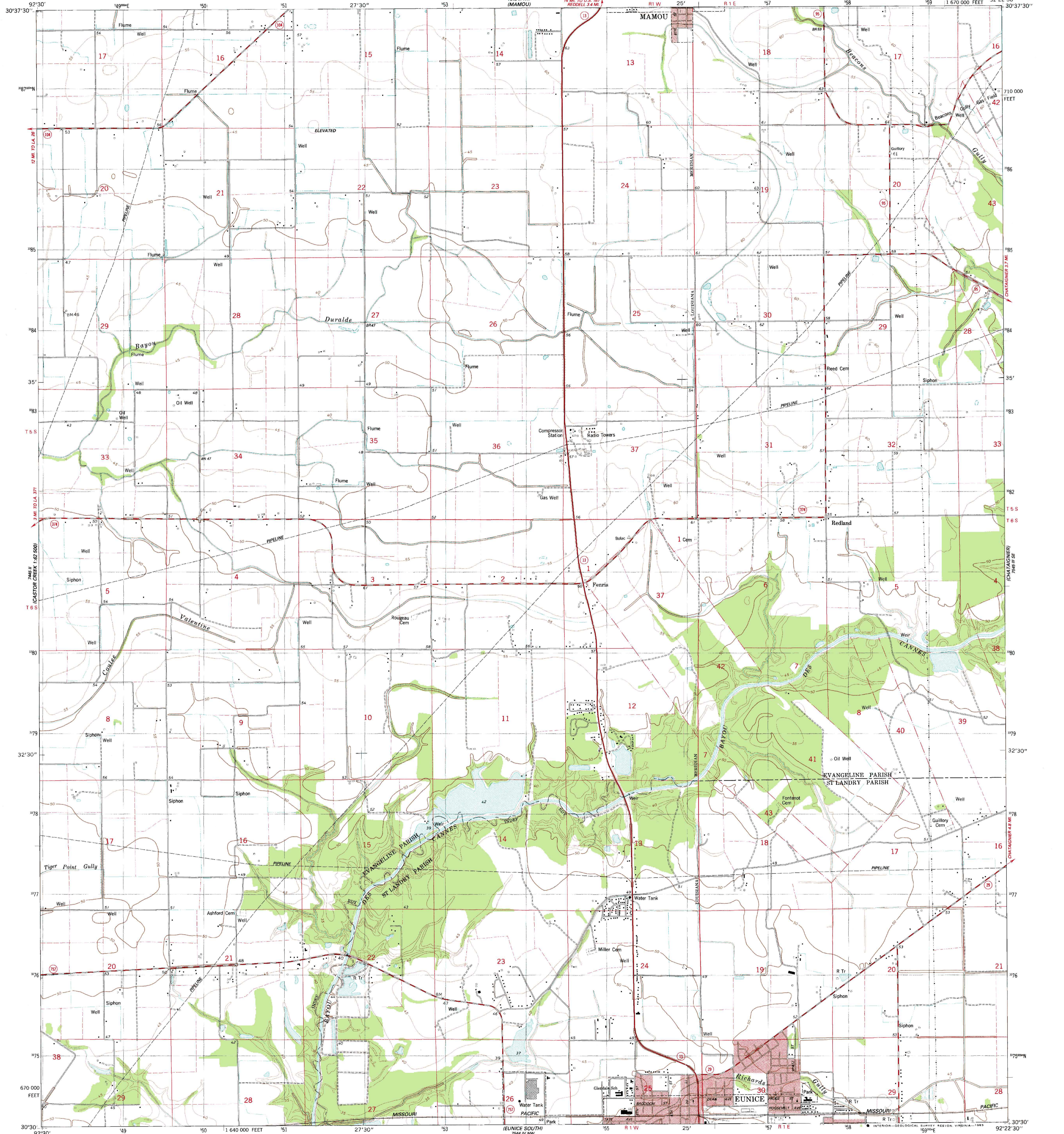
CASTON CREEK
1:25,000

UNITED STATES
DEPARTMENT OF THE INTERIOR
GEOLOGICAL SURVEY

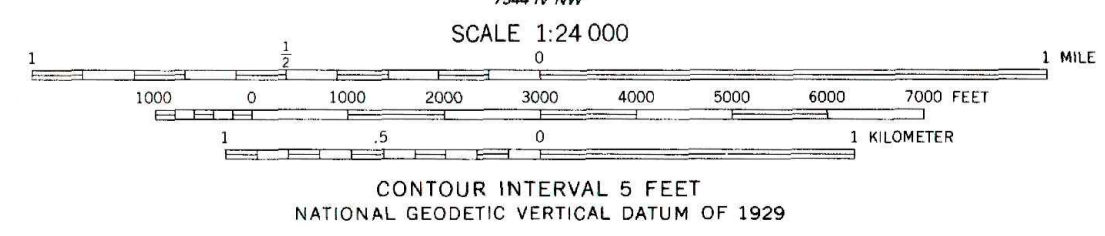
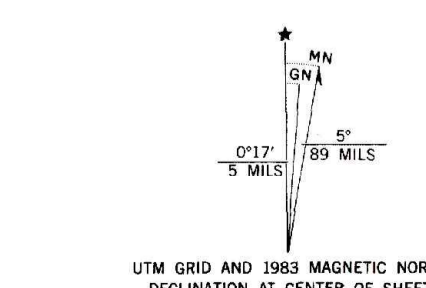
STATE OF LOUISIANA
DEPARTMENT OF PUBLIC WORKS
BATON ROUGE

EUNICE NORTH QUADRANGLE
LOUISIANA
7.5 MINUTE SERIES (TOPOGRAPHIC)
SW/4 VILLE PLATTE 15' QUADRANGLE

7545 III NW
REDELL 3.4 MI.
1:25,000
MILE PLATTE



Mapped, edited, and published by the Geological Survey
Control by USGS and NOS/NOAA
Planimetry by photogrammetric methods from aerial photographs taken 1980. Topography by planetable surveys 1981. Map edited 1983
Projection and 10,000-foot grid ticks: Louisiana coordinate system, south zone (Lambert conformal conic) 1000-meter Universal Transverse Mercator grid, zone 15 1927 North American Datum
To place on the predicted North American Datum 1983, move the projection lines 17 meters south and 14 meters east as shown by dashed corner ticks
Red tint indicates areas in which only landmark buildings are shown
Fine red dashed lines indicate selected fence and field lines where generally visible on aerial photographs. This information is unchecked



ROAD CLASSIFICATION
Primary highway, hard surface — Light-duty road, hard or improved surface
Secondary highway, hard surface — Unimproved road
Interstate Route — U. S. Route — State Route

THIS MAP COMPLIES WITH NATIONAL MAP ACCURACY STANDARDS
FOR SALE BY U. S. GEOLOGICAL SURVEY, DENVER, COLORADO 80225, OR RESTON, VIRGINIA 22092
AND LOUISIANA DEPARTMENT OF PUBLIC WORKS, BATON ROUGE, LOUISIANA 70804
A FOLDER DESCRIBING TOPOGRAPHIC MAPS AND SYMBOLS IS AVAILABLE ON REQUEST

EUNICE NORTH, LA.
SW/4 VILLE PLATTE 15' QUADRANGLE
N3030-W9222.5/7.5

1983
DMA 7545 III SW-SERIES Y885