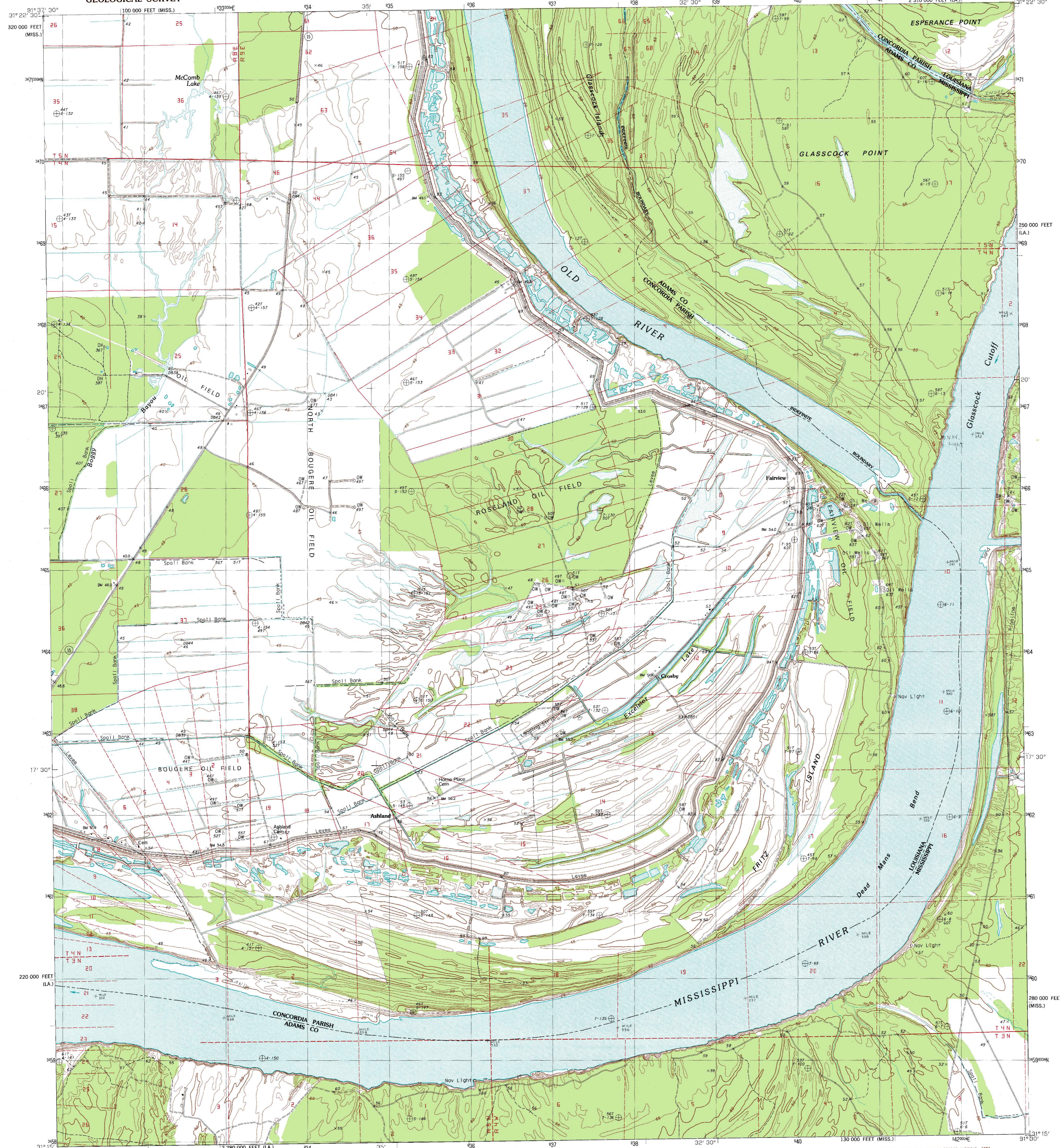


UNITED STATES  
DEPARTMENT OF THE INTERIOR  
GEOLOGICAL SURVEY

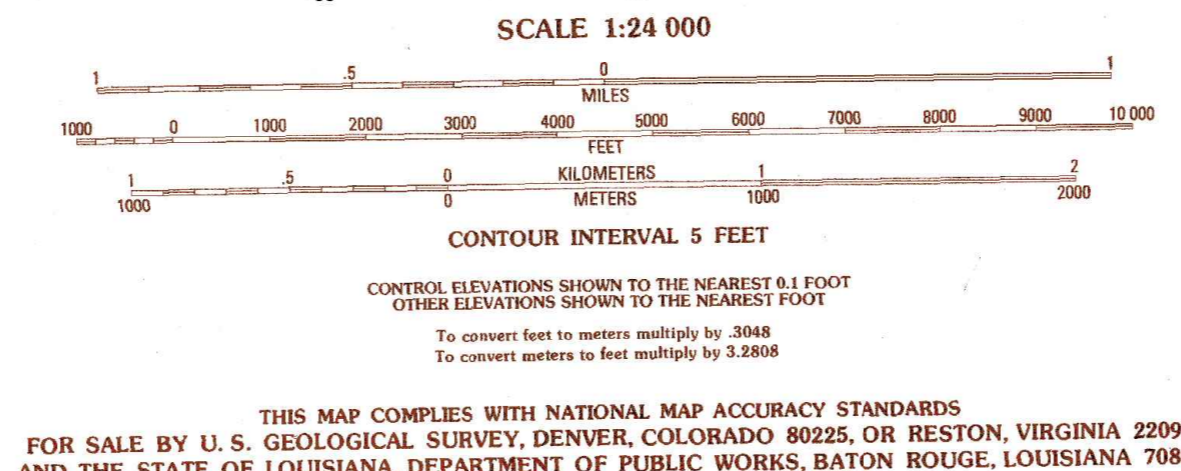
FAIRVIEW QUADRANGLE  
LOUISIANA-MISSISSIPPI  
7.5 MINUTE SERIES (TOPOGRAPHIC)



PRODUCED BY THE UNITED STATES GEOLOGICAL SURVEY  
CONTROL BY U.S.G.S. AND NOS/NOAA  
COMPILED FROM AERIAL PHOTOGRAPHS TAKEN 1977-78  
FIELD CHECKED 1979. MAP EDITED 1983  
PROJECTION LAMBERT CONFORMAL CONIC  
GRID: 1000-METER UNIVERSAL TRANSVERSE MERCATOR  
10,000-FOOT STATE GRID TICKS  
LOUISIANA, NORTH ZONE  
MISSISSIPPI, WEST ZONE

UTM GRID DECLINATION  
MAGNETIC NORTH DECLINATION  
NATIONAL GEODETIC VERTICAL DATUM OF 1929  
1927 NORTH AMERICAN DATUM  
To place on the predicted North American Datum of 1983,  
move the projection lines as shown by dashed corner ticks  
(15 meters south and 11 meters east)  
There may be private inholdings within the boundaries of any  
Federal and State reservations shown on this map

**PROVISIONAL MAP**  
Produced from original  
manuscript drawings. Infor-  
mation shown as of date of  
field check.



ROAD LEGEND

- Improved Road
- Unimproved Road
- Trail
- Interstate Route
- U. S. Route
- State Route

QUADRANGLE LOCATION

1	2	3	1 Monterey
4	5	6	2 Deer Park
7	8	9	3 Sibley
			4 Sluicem
			5 Buck Island
			6 Shaw
			7 Lake Many
			8 Lassley

ADJOINING 7.5' QUADRANGLE NAMES

**FAIRVIEW, LA.-MISS.**  
SEA MONTEREY 15' QUADRANGLE  
PROVISIONAL EDITION 1983

31091-C5-TF-024