

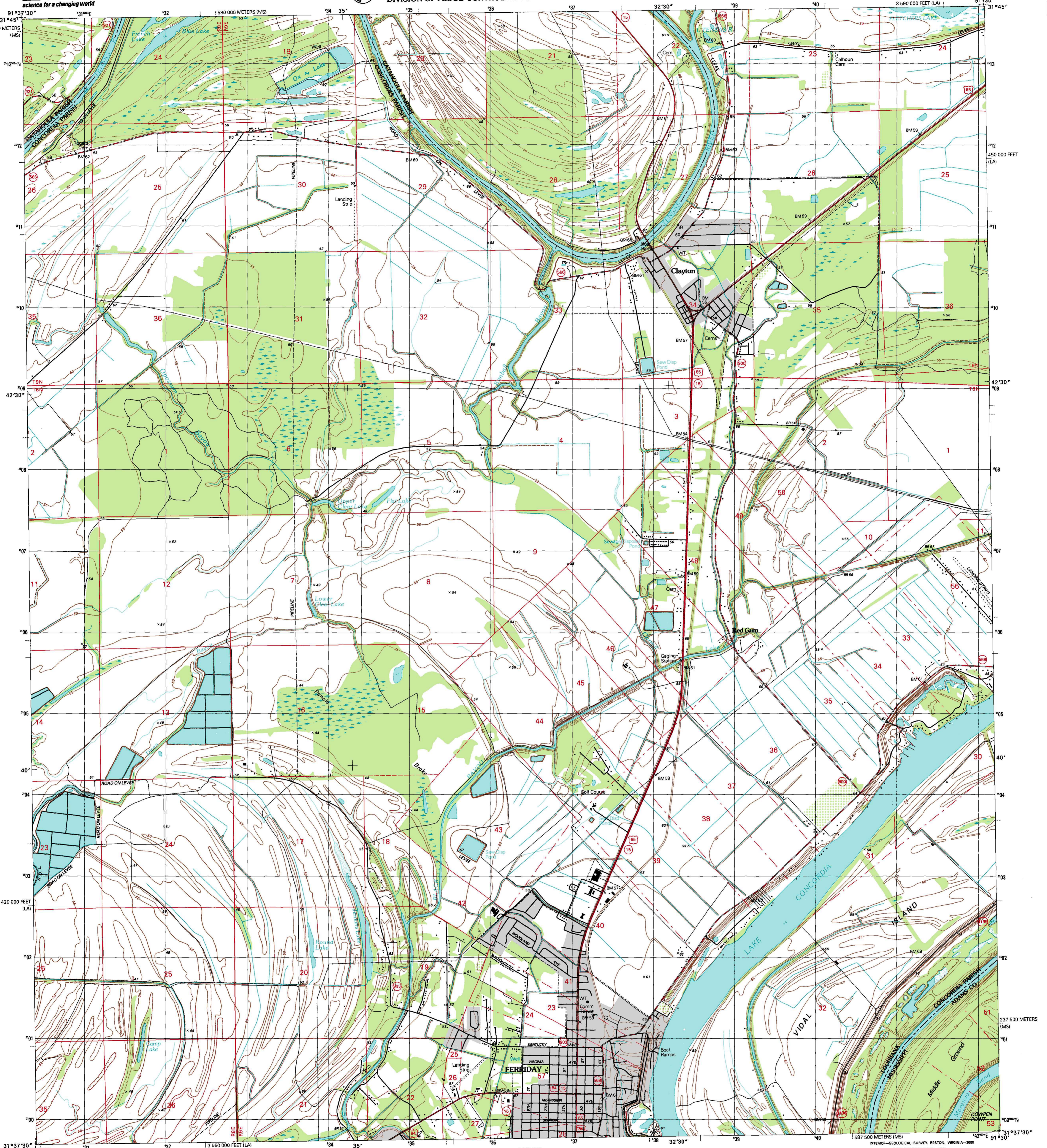


U.S. DEPARTMENT OF THE INTERIOR  
U.S. GEOLOGICAL SURVEY

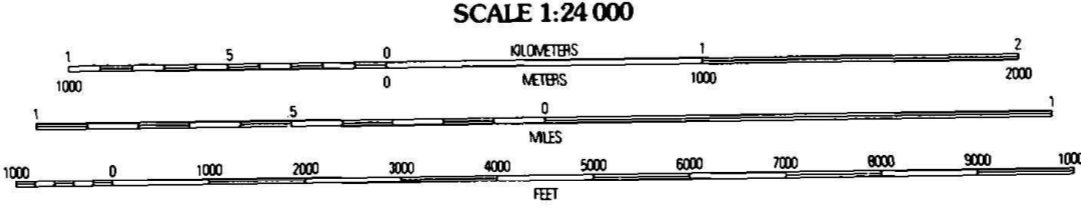
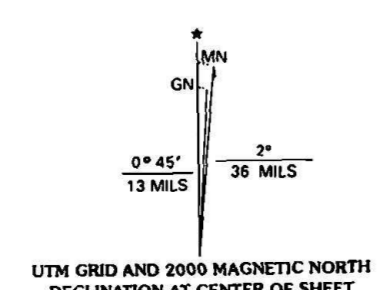


STATE OF LOUISIANA  
DEPARTMENT OF TRANSPORTATION AND DEVELOPMENT  
DIVISION OF FLOOD CONTROL AND WATER MANAGEMENT

FERRIDAY NORTH QUADRANGLE  
LOUISIANA-MISSISSIPPI  
7.5-MINUTE SERIES (TOPOGRAPHIC)



Produced by the United States Geological Survey  
Topography compiled 1977. Planimetry derived from imagery taken 1994 and other sources. Photinspected using imagery dated 1999; no major culture or drainage changes observed. PLSS and survey control current as of 1980. Boundaries, other than corporate, verified 2000  
North American Datum of 1983 (NAD 83). Projection and 1000-meter grid. Universal Transverse Mercator, zone 15  
10 000-foot ticks. Louisiana Coordinate System of 1983 (north zone)  
2 500-meter ticks. Mississippi Coordinate System of 1983 (west zone)  
North American Datum of 1927 (NAD 27) is shown by dashed corner ticks. The values of the shift between NAD 83 and NAD 27 for 7.5-minute intersections are obtainable from National Geodetic Survey NADCON software



CONTOUR INTERVAL 5 FEET  
NATIONAL GEODETIC VERTICAL DATUM OF 1929  
TO CONVERT FROM FEET TO METERS, MULTIPLY BY 0.3048

THIS MAP COMPLIES WITH NATIONAL MAP ACCURACY STANDARDS  
FOR SALE BY U.S. GEOLOGICAL SURVEY, P.O. BOX 25286, DENVER, COLORADO 80225  
AND LOUISIANA DEPARTMENT OF TRANSPORTATION AND DEVELOPMENT, BATON ROUGE, LOUISIANA 70804  
A FOLDER DESCRIBING TOPOGRAPHIC MAPS AND SYMBOLS IS AVAILABLE ON REQUEST



QUADRANGLE LOCATION

1	2	3
4	5	6
7	8	

ADJOINING 7.5 QUADRANGLE NAMES

- ROAD CLASSIFICATION
- Primary highway hard surface
  - Secondary highway hard surface
  - Unimproved road
  - Light-duty road, hard or improved surface
  - Interstate Route
  - U.S. Route
  - State Route

FERRIDAY NORTH, LA-MS  
1999

NIMA 7647 II NE-SERIES V885



ISBN 0-107-93712-7  
9 780607 937127