



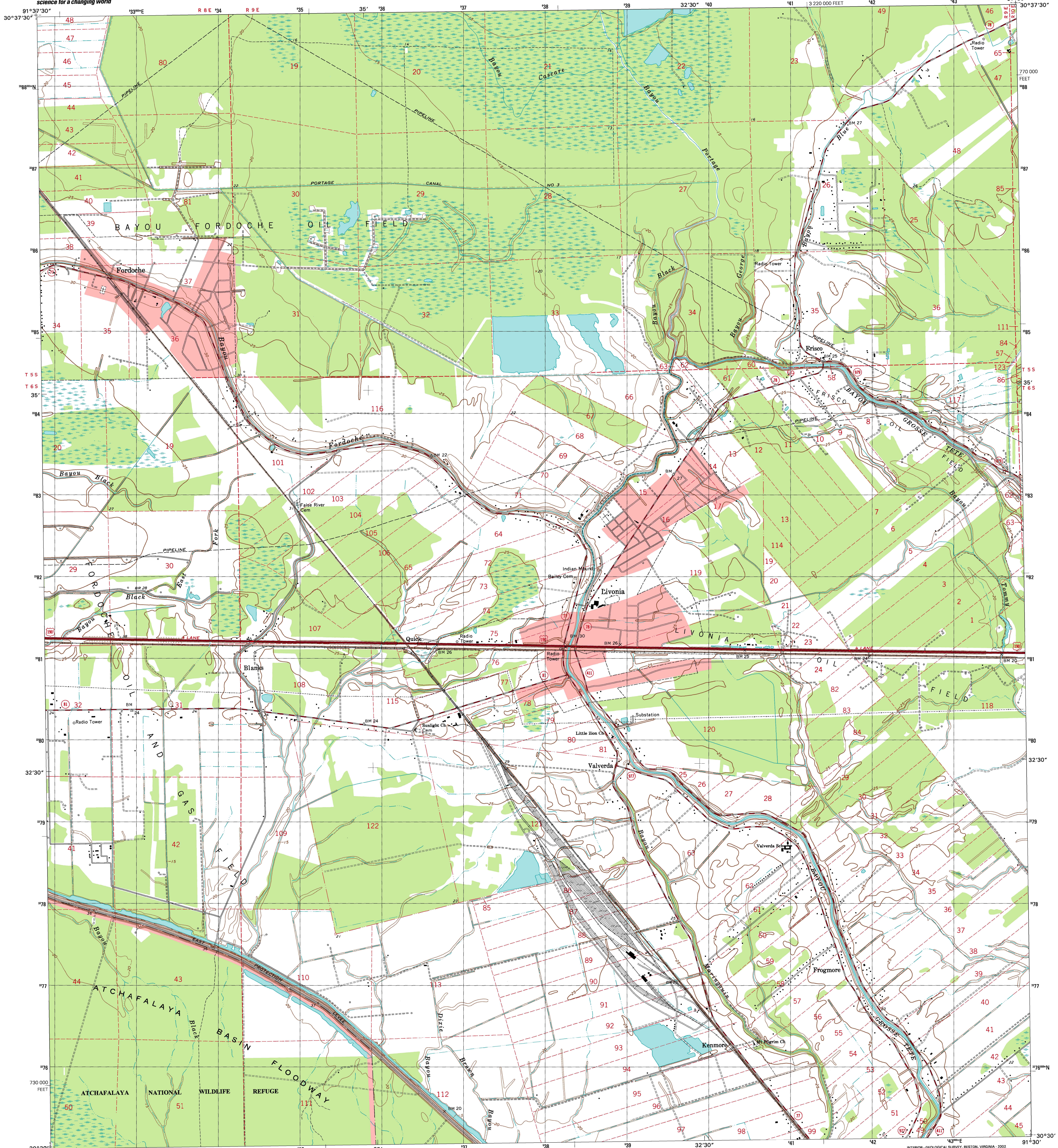
U.S. DEPARTMENT OF THE INTERIOR  
U.S. GEOLOGICAL SURVEY



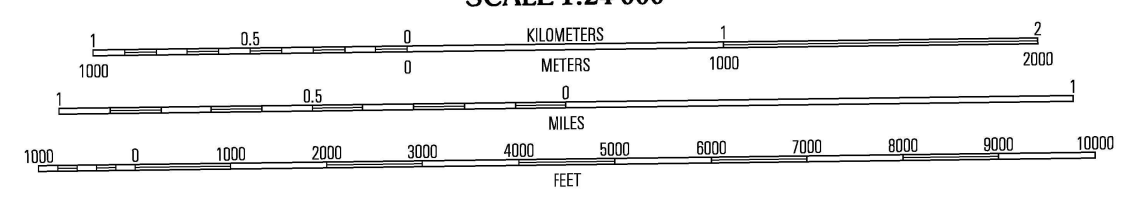
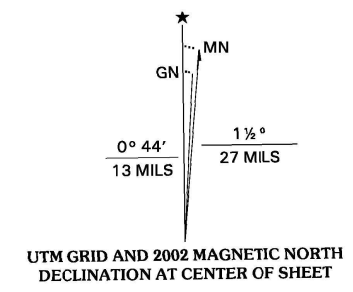
STATE OF LOUISIANA  
DEPARTMENT OF TRANSPORTATION AND DEVELOPMENT

FORDOCHE QUADRANGLE  
LOUISIANA-POINTE COUPEE PARISH  
7.5-MINUTE SERIES (TOPOGRAPHIC)

L. BENTON  
FORSCHEM, INC.



Produced by the United States Geological Survey in cooperation with Louisiana Department of Transportation and Development  
Topography compiled 1966. Planimetry derived from imagery taken 1958 and other sources. Public Land Survey System and survey control current as of 1969. Boundaries current as of 2001  
North American Datum of 1983 (NAD 83). Projection and 1 000-meter grid: Universal Transverse Mercator, zone 15 10 000-foot ticks: Louisiana Coordinate System of 1983 (south zone)  
North American Datum of 1927 (NAD 27) is shown by dashed corner ticks. The values of the shift between NAD 83 and NAD 27 for 7.5-minute intersections are obtainable from National Geodetic Survey NADCON software  
There may be private holdings within the boundaries of the National or State reservations shown on this map  
This quadrangle covers a subsidence area  
Houses of worship, schools, and other labeled buildings verified 1969



CONTOUR INTERVAL 5 FEET  
NATIONAL GEODETIC VERTICAL DATUM OF 1929  
TO CONVERT FROM FEET TO METERS, MULTIPLY BY 0.3048

THIS MAP COMPLIES WITH NATIONAL MAP ACCURACY STANDARDS  
FOR SALE BY U.S. GEOLOGICAL SURVEY, P.O. BOX 25286, DENVER, COLORADO 80225  
AND LOUISIANA DEPARTMENT OF TRANSPORTATION AND DEVELOPMENT, BATON ROUGE, LOUISIANA 70804  
A FOLDER DESCRIBING TOPOGRAPHIC MAPS AND SYMBOLS IS AVAILABLE ON REQUEST



QUADRANGLE LOCATION

ROAD CLASSIFICATION

Primary highway hard surface	Light-duty road, hard or improved surface
Secondary highway hard surface	Unimproved road
Interstate Route	U.S. Route
	State Route

1	2	3
4	5	6
7	8	

ADJOINING 7.5' QUADRANGLES  
LA 148D

FORDOCHE, LA  
1998  
NIMA 7645 II SE-SERIES V885

