

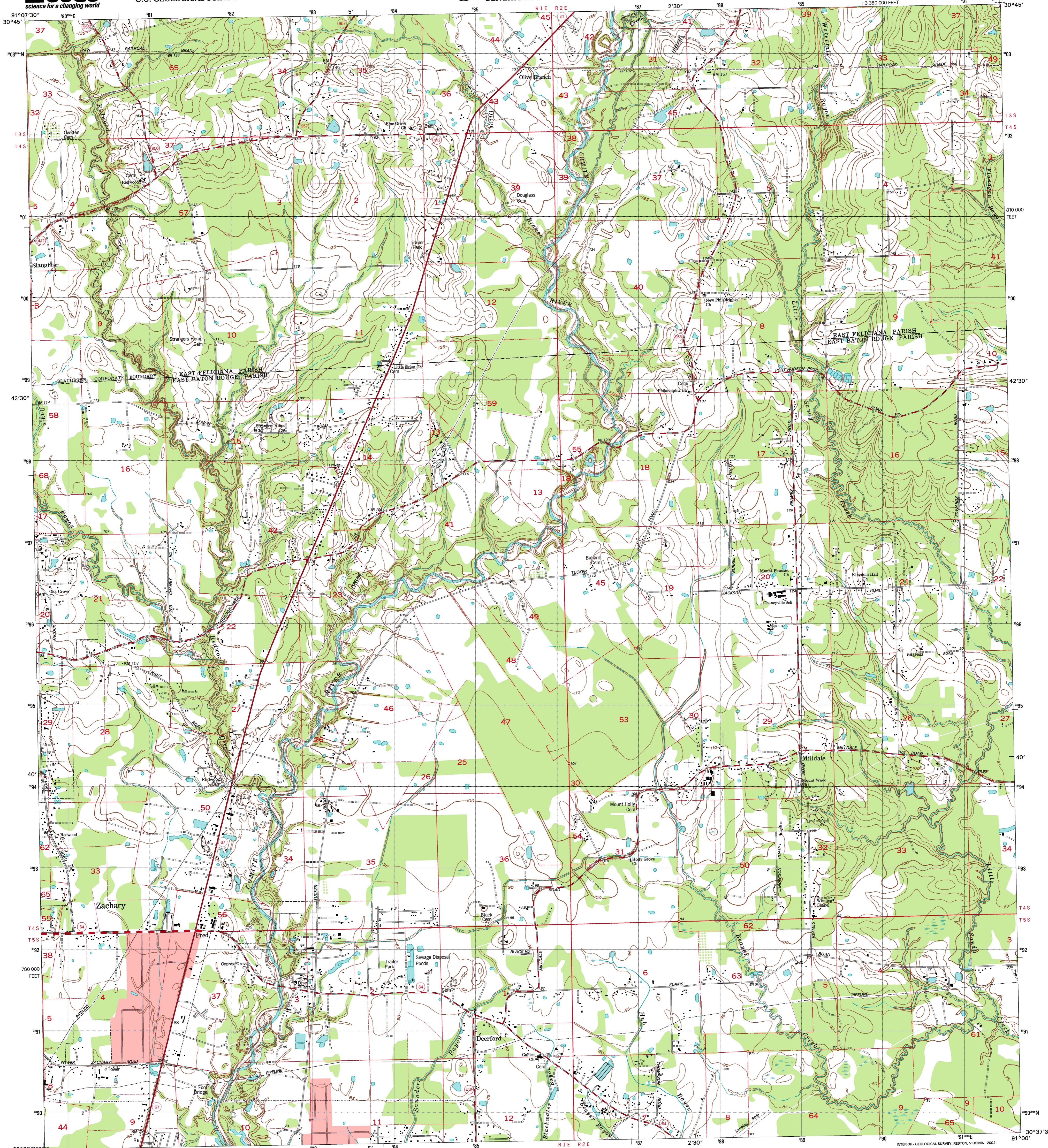


U.S. DEPARTMENT OF THE INTERIOR
U.S. GEOLOGICAL SURVEY

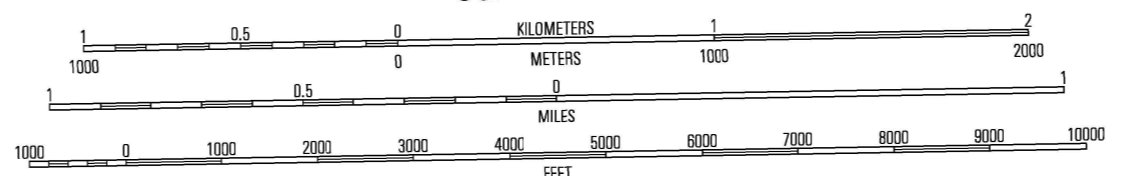
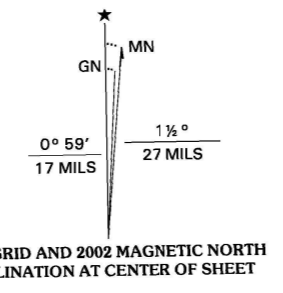


STATE OF LOUISIANA
DEPARTMENT OF TRANSPORTATION AND DEVELOPMENT

FRED QUADRANGLE
LOUISIANA
7.5-MINUTE SERIES (TOPOGRAPHIC)

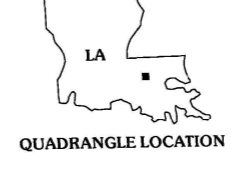


Produced by the United States Geological Survey in cooperation with Louisiana Department of Transportation and Development
Topography compiled 1963. Planimetry derived from imagery taken 1998 and other sources. Public Land Survey System and survey control current as of 1963. Boundaries current as of 2002
North American Datum of 1983 (NAD 83). Projection and 1000-meter grid: Universal Transverse Mercator, zone 15
10 000-foot ticks: Louisiana Coordinate System of 1983 (south zone)
North American Datum of 1927 (NAD 27) is shown by dashed corner ticks. The values of the shift between NAD 83 and NAD 27 for 7.5-minute intersections are obtainable from National Geodetic Survey NADCON software
This quadrangle covers a subsidence area
Houses of worship, schools, and other labeled buildings verified 1963



CONTOUR INTERVAL 5 FEET
NATIONAL GEODETIC VERTICAL DATUM OF 1929
TO CONVERT FROM FEET TO METERS, MULTIPLY BY 0.3048

THIS MAP COMPLIES WITH NATIONAL MAP ACCURACY STANDARDS
FOR SALE BY U.S. GEOLOGICAL SURVEY, P.O. BOX 25286, DENVER, COLORADO 80225
AND LOUISIANA DEPARTMENT OF TRANSPORTATION AND DEVELOPMENT, BATON ROUGE, LOUISIANA 70804
A FOLDER DESCRIBING TOPOGRAPHIC MAPS AND SYMBOLS IS AVAILABLE ON REQUEST



QUADRANGLE LOCATION

1	2	3
4	5	6
7	8	9

ADJOINING 7.5' QUADRANGLES
LA 1508

ROAD CLASSIFICATION

Primary highway
hard surface
Secondary highway
hard surface

Light-duty road, hard or
improved surface

Unimproved road

Interstate Route
U.S. Route
State Route

FRED, LA
1998
NIMA 7745 II NE-SERIES V885

