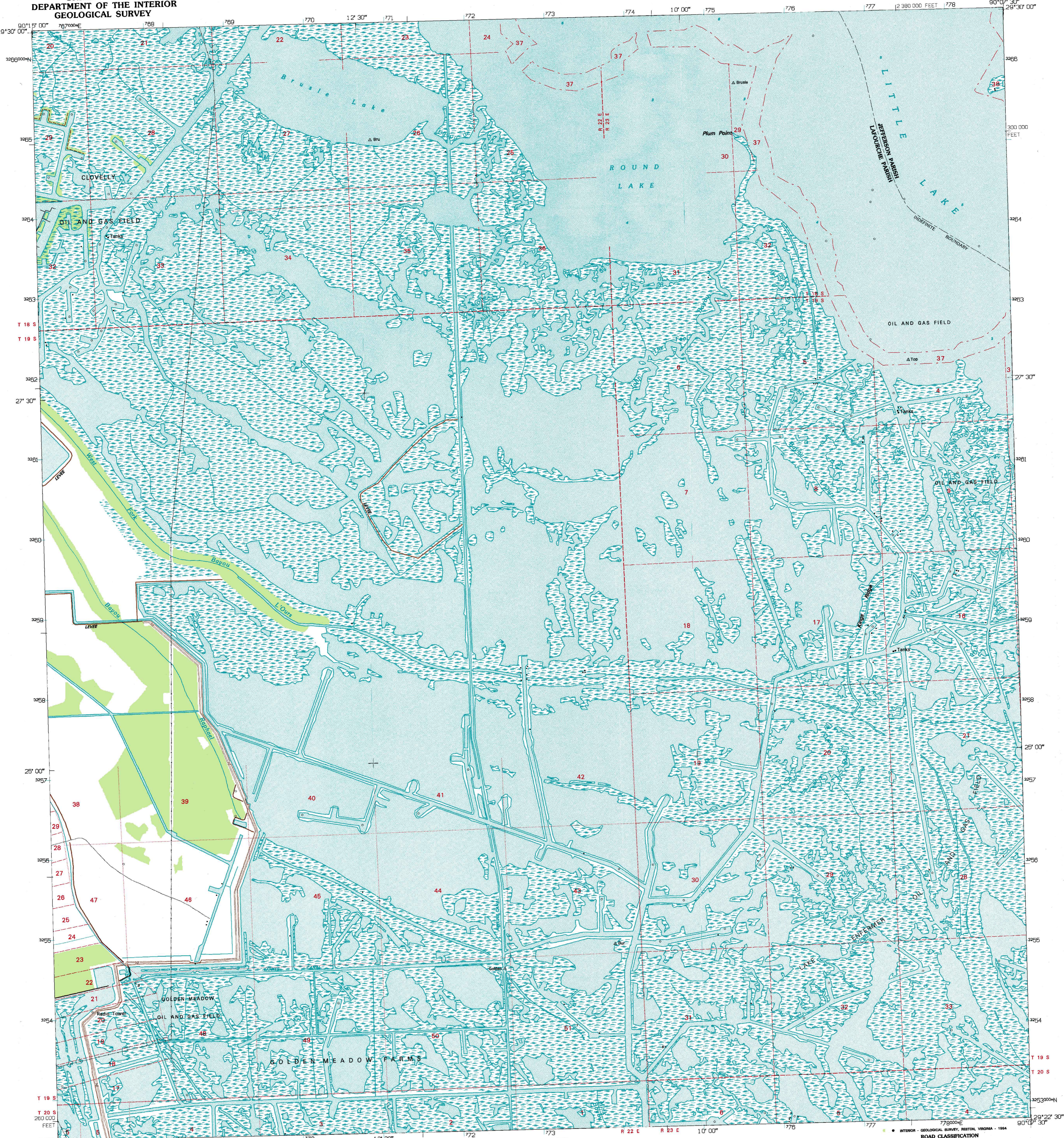
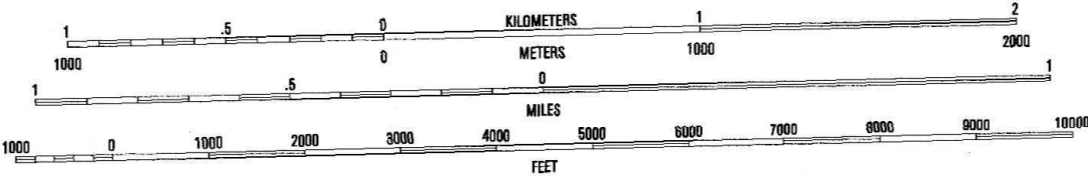


**GOLDEN MEADOW FARMS QUADRANGLE
LOUISIANA
7.5 MINUTE SERIES (TOPOGRAPHIC)**

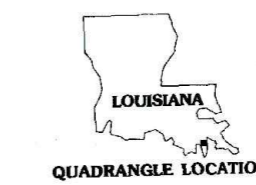
**UNITED STATES
DEPARTMENT OF THE INTERIOR
GEOLOGICAL SURVEY**



SCALE 1:24000



CONTOUR INTERVAL 5 FEET
NATIONAL GEODETIC VERTICAL DATUM OF 1929



QUADRANGLE LOCATION

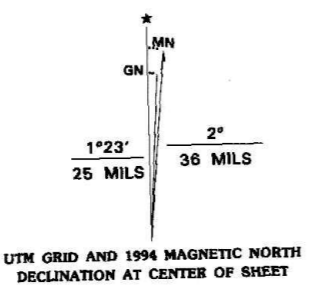
1	2	3	1 Cut Off
2	3	4	2 Bay L'Ours
3	4	5	3 Three Bayou Bay
4	5	6	4 Golden Meadow
5	6	7	5 Bay Desgras
6	7	8	6 Bay Courant
7	8		7 Mink Bayou
8			8 Bay Tembour

ADJOINING 7.5' QUADRANGLE NAMES

ROAD CLASSIFICATION

Primary highway hard surface	Light-duty road, hard or improved surface
Secondary highway hard surface	Unimproved road
Interstate Route	U.S. Route
	State Route

Produced by the United States Geological Survey
Control by USGS and NOS/NOAA
Planimetry by photogrammetric methods from aerial photographs taken 1952. Topography by plane-table surveys 1953. Revised from aerial photographs taken 1989. Field checked 1993. Map edited 1994
Universal Transverse Mercator projection
10,000-foot grid ticks: Louisiana coordinate system, south zone
1000-meter Universal Transverse Mercator grid ticks, zone 15, shown in blue
1927 North American Datum (NAD 27)
North American Datum of 1983 (NAD 83) is shown by dashed corner ticks
The values of the shift between NAD 27 and NAD 83 for 7.5-minute intersections are given in USGS Bulletin 1875
Where omitted, land lines have not been established
This map covers an active subsidence area. Evaluate relief and elevation information based on recent sources
Fine red dashed lines indicate selected fence and field lines where generally visible on aerial photographs. This information is unchecked



THIS MAP COMPLIES WITH NATIONAL MAP ACCURACY STANDARDS
FOR SALE BY U.S. GEOLOGICAL SURVEY DENVER, COLORADO 80225, OR RESTON, VIRGINIA 22092
AND LOUISIANA DEPARTMENT OF TRANSPORTATION AND DEVELOPMENT, BATON ROUGE, LOUISIANA 70804
A FOLDER DESCRIBING TOPOGRAPHIC MAPS AND SYMBOLS IS AVAILABLE ON REQUEST

GOLDEN MEADOW FARMS, LA.
29090-D2-TF-024
1994
DMA 7942 1 NW - SERIES V885