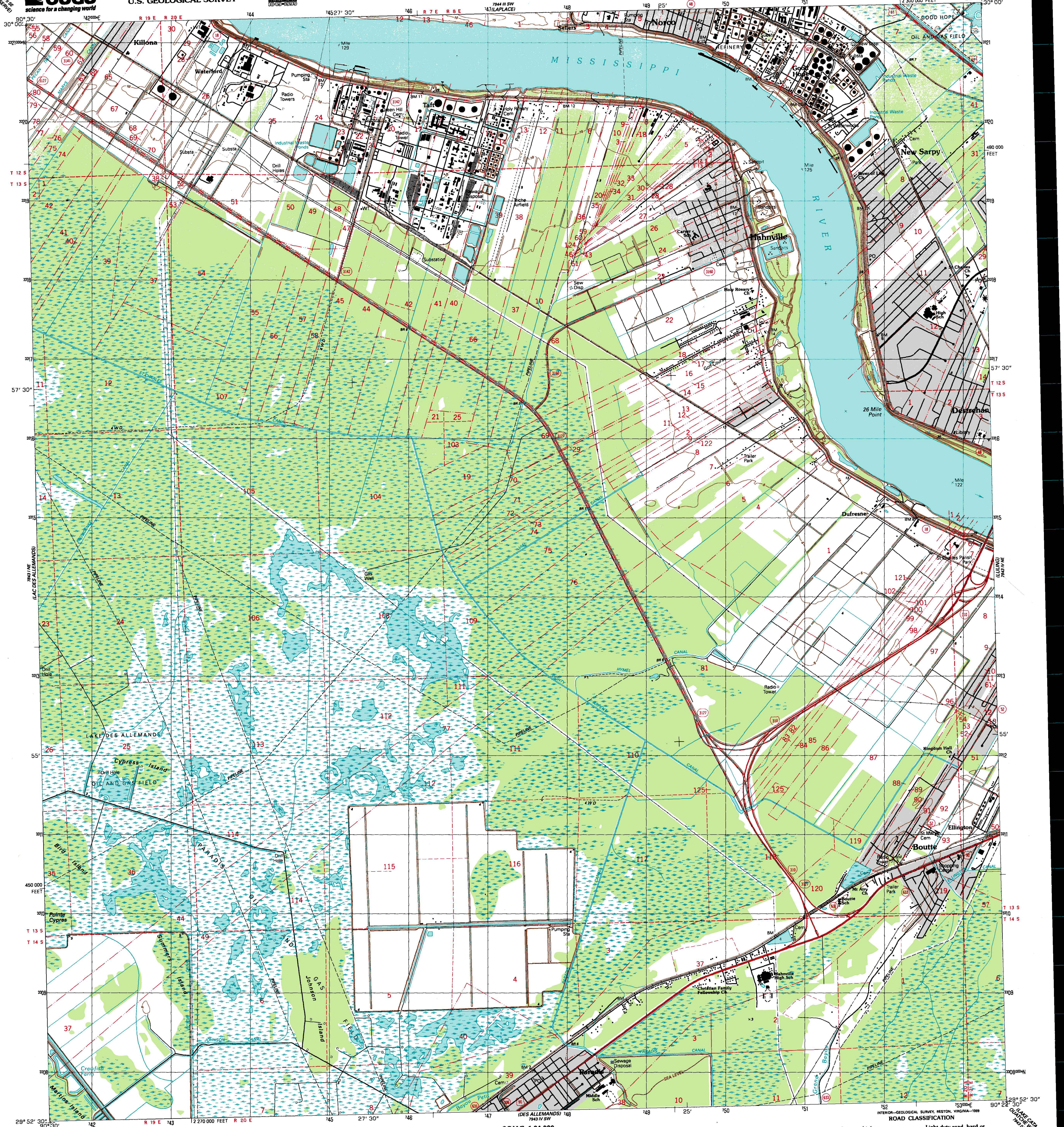




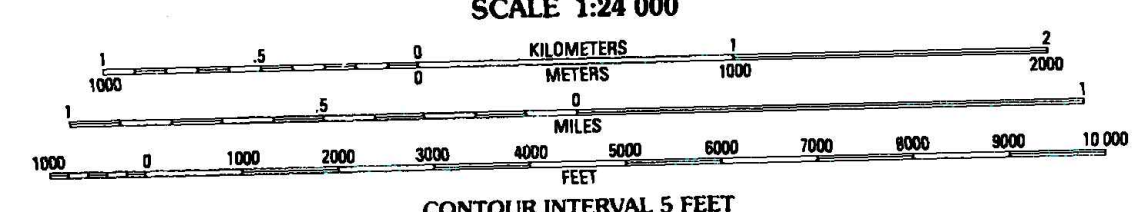
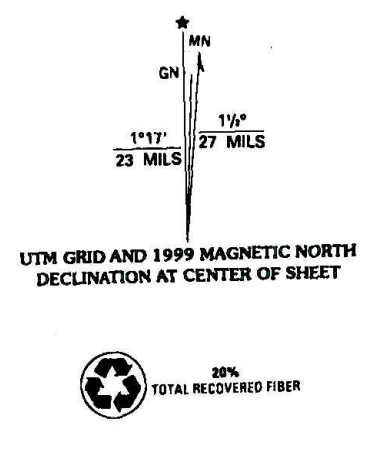
U.S. DEPARTMENT OF THE INTERIOR
U.S. GEOLOGICAL SURVEY



HAHNVILLE QUADRANGLE
LOUISIANA-ST CHARLES PARISH
7.5 MINUTE SERIES (TOPOGRAPHIC)



Produced by the United States Geological Survey
Derived from imagery taken 1989 and other sources. Photoinsected using imagery taken 1995; no major culture or drainage changes observed. PLSS and survey control current as of 1991. Boundaries verified 1999.
North American Datum of 1927 (NAD 27). Projection and 10 000-foot ticks: Louisiana coordinate system, south zone (Lambert conformal conic) 1000-meter Transverse Mercator grid, zone 15
North American Datum of 1983 (NAD 83) is shown by dashed corner ticks. The values of the shift between NAD 27 and NAD 83 for 7.5-minute intersections are obtainable from National Geodetic Survey NADCON software
All or part of this quadrangle lies within a subsidence area. Where omitted, land lines have not been established.



CONTOUR INTERVAL 5 FEET
NATIONAL GEODETIC VERTICAL DATUM OF 1929
TO CONVERT FROM FEET TO METERS, MULTIPLY BY 0.3048
THIS MAP COMPLEYS WITH NATIONAL MAP ACCURACY STANDARDS
FOR SALE BY U.S. GEOLOGICAL SURVEY, P.O. BOX 25286, DENVER, COLORADO 80225
AND LOUISIANA DEPARTMENT OF TRANSPORTATION AND DEVELOPMENT, BATON ROUGE, LOUISIANA 70804
A FOLDER DESCRIBING TOPOGRAPHIC MAPS AND SYMBOLS IS AVAILABLE ON REQUEST



ROAD CLASSIFICATION

- Primary highway, hard surface
- Secondary highway, hard surface
- Light-duty road, hard or improved surface
- Unimproved road
- Interstate Route
- U. S. Route
- State Route

HAHNVILLE, LA.

1995

NIMA 7943 IV NW-SERIES V885



ISBN 0-607-92516-7