

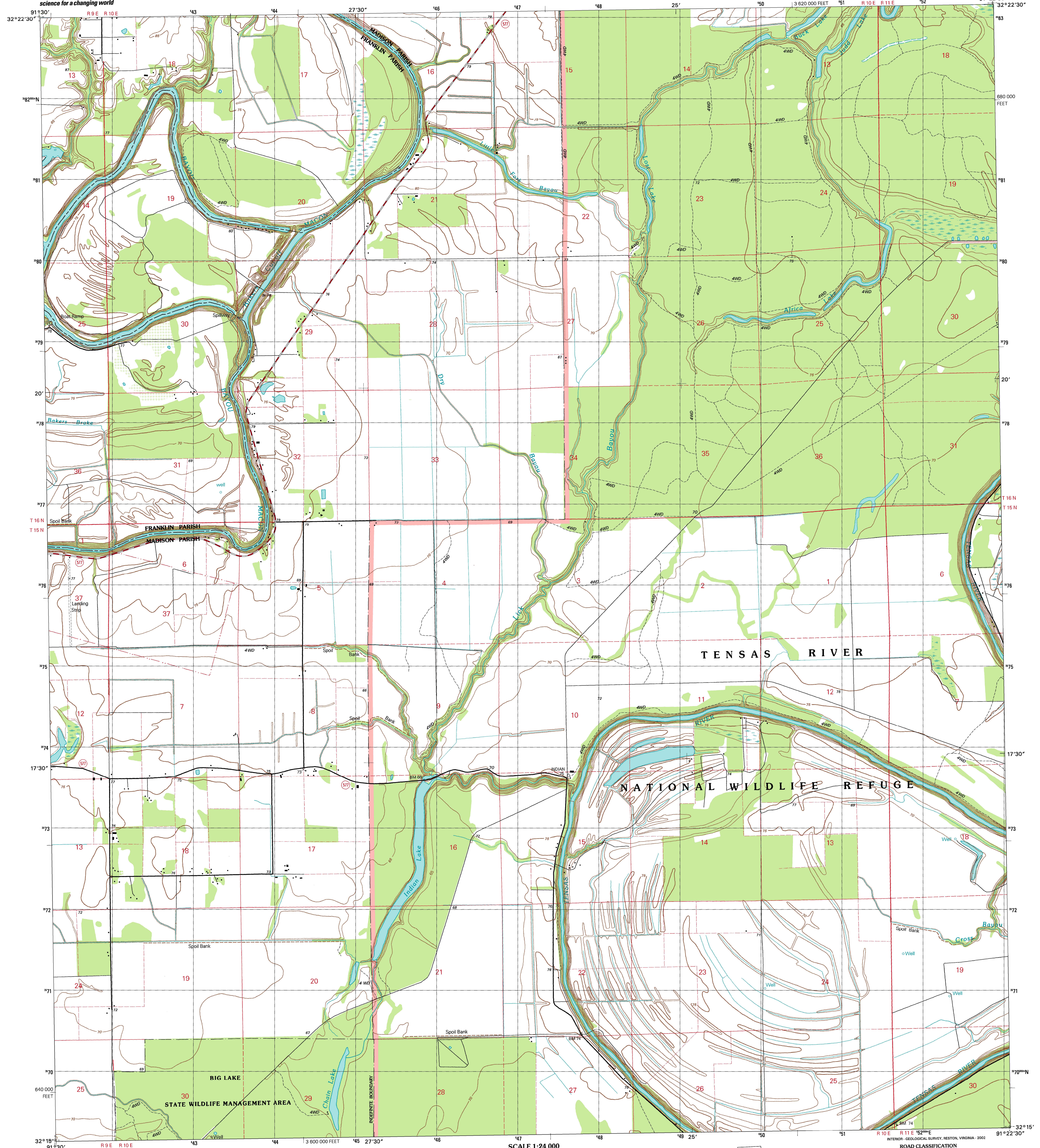


U.S. DEPARTMENT OF THE INTERIOR
U.S. GEOLOGICAL SURVEY

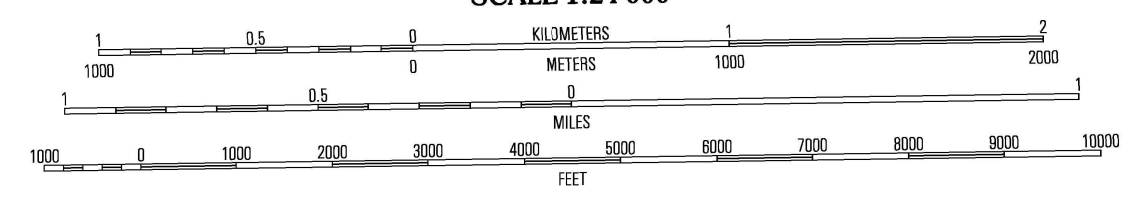
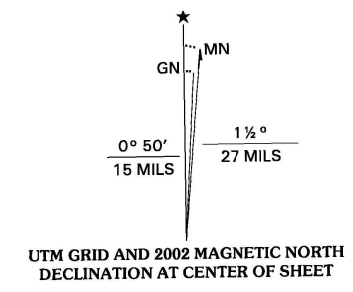


STATE OF LOUISIANA
DEPARTMENT OF TRANSPORTATION AND DEVELOPMENT

INDIAN LAKE QUADRANGLE
LOUISIANA
7.5-MINUTE SERIES (TOPOGRAPHIC)



Produced by the United States Geological Survey
in cooperation with Louisiana Department of
Transportation and Development
Topography compiled 1982. Planimetry derived from imagery
taken 1998 and other sources. Public Land Survey System and
survey control current as of 1984. Boundaries current as of 2002
North American Datum of 1983 (NAD 83). Projection and
1 000-meter grid: Universal Transverse Mercator, zone 15
10 000-foot ticks: Louisiana Coordinate System of 1983 (north zone)
North American Datum of 1927 (NAD 27) is shown by dashed
corner ticks. The values of the shift between NAD 83 and
NAD 27 for 7.5-minute intersections are obtainable from
National Geodetic Survey NADCON software
There may be private inholdings within the boundaries of the
National or State reservations shown on this map
Houses of worship, schools, and other labeled buildings verified 1984



CONTOUR INTERVAL 5 FEET
NATIONAL GEODETIC VERTICAL DATUM OF 1929
TO CONVERT FROM FEET TO METERS, MULTIPLY BY 0.3048



QUADRANGLE LOCATION

1	2	3	1 Dunn
			2 Duhil
			3 Tensal
			4 Lamer
4		5	5 Waverly SE
			6 Crosville
			7 Tensas Bluff
			8 Westwood
6	7	8	

ADJOINING 7.5' QUADRANGLES
LA 43C

ROAD CLASSIFICATION
Primary highway
hard surface
Secondary highway
hard surface
Light-duty road, hard or
improved surface
Unimproved road
Interstate Route
U.S. Route
State Route

THIS MAP COMPLIES WITH NATIONAL MAP ACCURACY STANDARDS
FOR SALE BY U.S. GEOLOGICAL SURVEY, P.O. BOX 25286, DENVER, COLORADO 80225
AND LOUISIANA DEPARTMENT OF TRANSPORTATION AND DEVELOPMENT, BATON ROUGE, LOUISIANA 70804
A FOLDER DESCRIBING TOPOGRAPHIC MAPS AND SYMBOLS IS AVAILABLE ON REQUEST

INDIAN LAKE, LA
1998
NIMA 7748 III NE-SERIES V885



ISBN 0-607-94554-2
9 780607 945542