

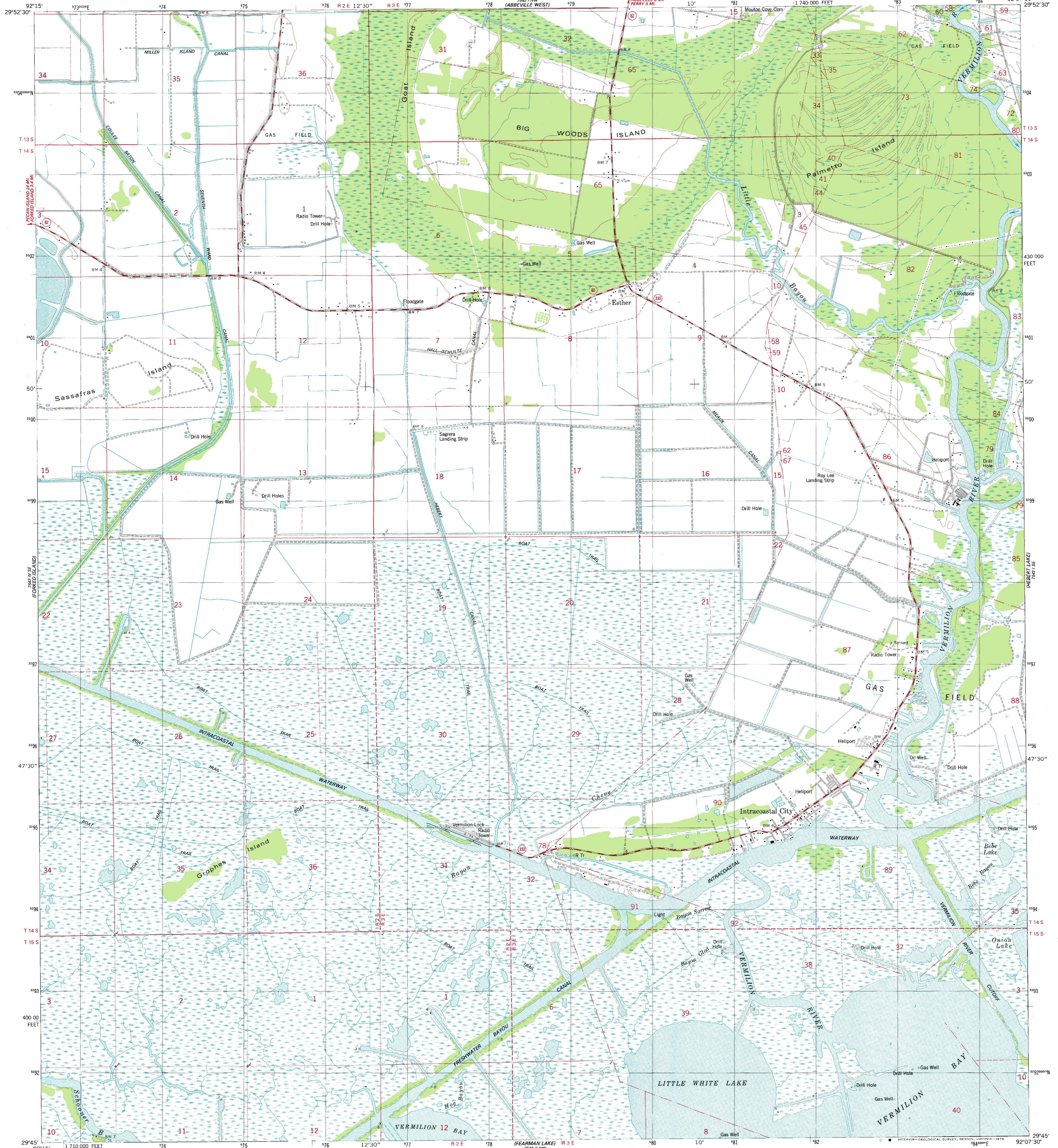
FROM THE SOUTH

UNITED STATES  
DEPARTMENT OF THE INTERIOR  
GEOLOGICAL SURVEY

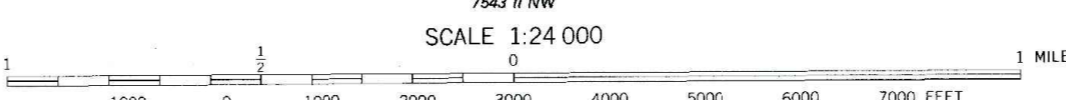
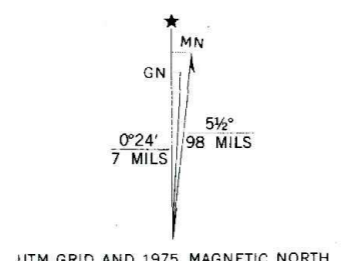
STATE OF LOUISIANA  
DEPARTMENT OF PUBLIC WORKS  
BATON ROUGE

INTRACOASTAL CITY QUADRANGLE  
LOUISIANA—VERMILION PARISH  
7.5 MINUTE SERIES (TOPOGRAPHIC)  
SW/4 ABBEVILLE 15' QUADRANGLE

FROM THE EAST  
ABBEVILLE EAST



Mapped, edited, and published by the Geological Survey  
Control by USGS, NOS/NOAA, and Louisiana Department of Highways  
Planimetry by photogrammetric methods from aerial photographs taken 1974. Topography by planetable surveys 1975  
Selected hydrographic data compiled from NOS/NOAA Chart 11349 (1976)  
This information is not intended for navigational purposes  
Projection and 10,000-foot grid ticks: Louisiana coordinate system, south zone (Lambert conformal conic)  
1000-meter Universal Transverse Mercator grid, zone 15  
1927 North American datum  
Dotted land lines established by private survey  
All or part of this quadrangle lies within a subsidence area  
Fine red dashed lines indicate selected fence and field lines where generally visible on aerial photographs. This information is unchecked



CONTOUR INTERVAL 5 FEET  
NATIONAL GEODETIC VERTICAL DATUM OF 1929  
DEPTH CURVES AND SOUNDINGS IN FEET—DATUM IS MEAN LOW WATER  
SHORELINE SHOWN REPRESENTS THE APPROXIMATE LINE OF MEAN HIGH WATER  
THE MEAN RANGE OF TIDE IS APPROXIMATELY 1.5 FEET  
THIS MAP COMPLIES WITH NATIONAL MAP ACCURACY STANDARDS  
FOR SALE BY U. S. GEOLOGICAL SURVEY, DENVER, COLORADO 80225, OR RESTON, VIRGINIA 22092  
AND STATE OF LOUISIANA, DEPARTMENT OF PUBLIC WORKS, BATON ROUGE, LOUISIANA 70804  
A FOLDER DESCRIBING TOPOGRAPHIC MAPS AND SYMBOLS IS AVAILABLE ON REQUEST



ROAD CLASSIFICATION  
Primary highway, hard surface ——— Light-duty road, hard or improved surface ———  
Secondary highway, hard surface ——— Unimproved road ———  
Interstate Route (I) U. S. Route (R) State Route (S)

INTRACOASTAL CITY, LA.  
SW/4 ABBEVILLE 15' QUADRANGLE  
N2945—W9207.5/7.5

1975

AMS 7543 1 SW—SERIES V885