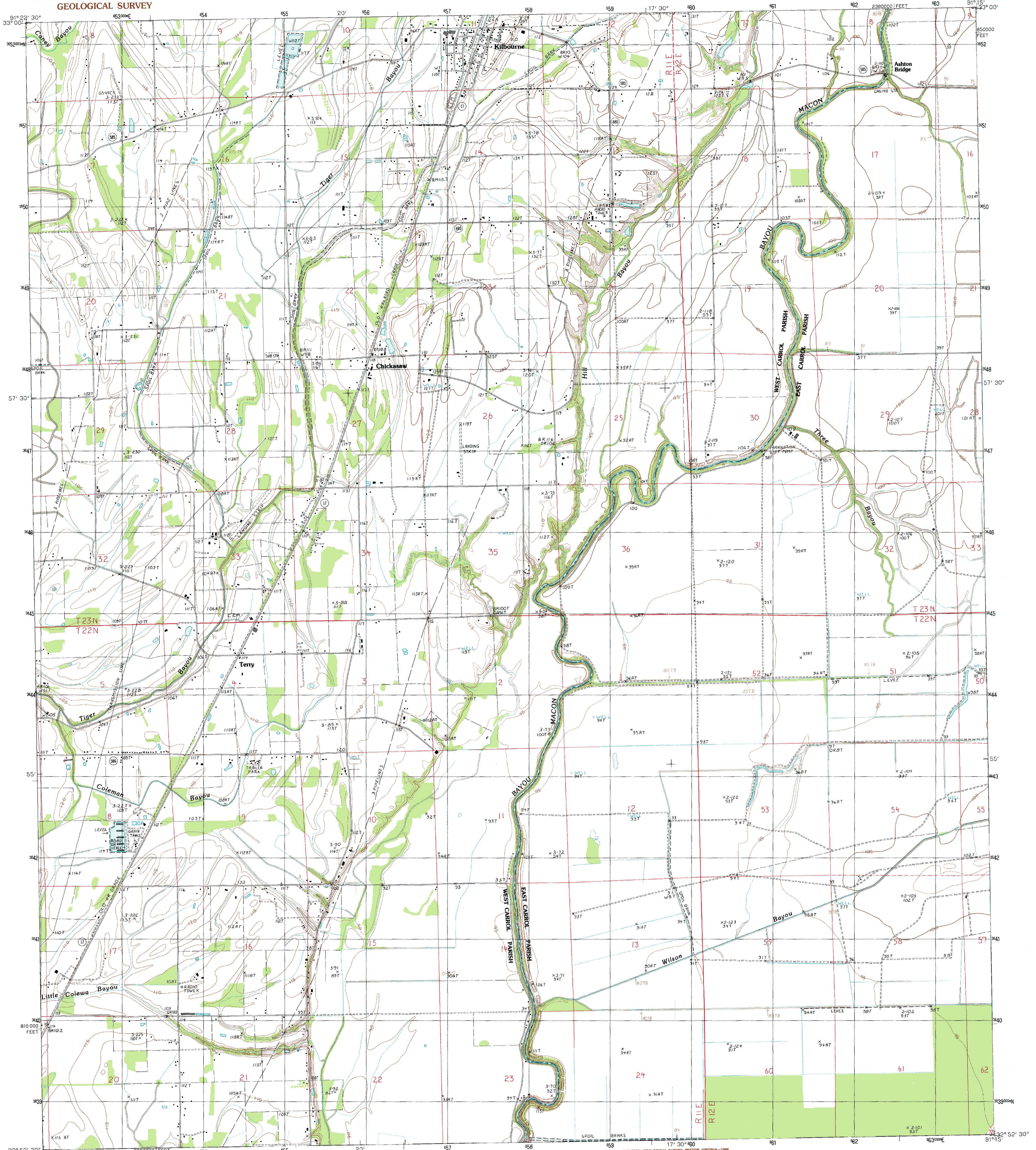


UNITED STATES
DEPARTMENT OF THE INTERIOR
GEOLOGICAL SURVEY

KILBOURNE QUADRANGLE
LOUISIANA
7.5 MINUTE SERIES (TOPOGRAPHIC)



91° 22' 30"
33° 00'
352000
35000
34800
34600
34400
34200
34000
33800
33600
33400
33200
33000
32800
32600
32400
32200
32000
31800
31600
31400
31200
31000
30800
30600
30400
30200
30000
29800
29600
29400
29200
29000
28800
28600
28400
28200
28000
27800
27600
27400
27200
27000
26800
26600
26400
26200
26000
25800
25600
25400
25200
25000
24800
24600
24400
24200
24000
23800
23600
23400
23200
23000
22800
22600
22400
22200
22000
21800
21600
21400
21200
21000
20800
20600
20400
20200
20000
19800
19600
19400
19200
19000
18800
18600
18400
18200
18000
17800
17600
17400
17200
17000
16800
16600
16400
16200
16000
15800
15600
15400
15200
15000
14800
14600
14400
14200
14000
13800
13600
13400
13200
13000
12800
12600
12400
12200
12000
11800
11600
11400
11200
11000
10800
10600
10400
10200
10000
9800
9600
9400
9200
9000
8800
8600
8400
8200
8000
7800
7600
7400
7200
7000
6800
6600
6400
6200
6000
5800
5600
5400
5200
5000
4800
4600
4400
4200
4000
3800
3600
3400
3200
3000
2800
2600
2400
2200
2000
1800
1600
1400
1200
1000
800
600
400
200
0
200
400
600
800
1000
1200
1400
1600
1800
2000
2200
2400
2600
2800
3000
3200
3400
3600
3800
4000
4200
4400
4600
4800
5000
5200
5400
5600
5800
6000
6200
6400
6600
6800
7000
7200
7400
7600
7800
8000
8200
8400
8600
8800
9000
9200
9400
9600
9800
10000

91° 15'
33° 00'
35000
34800
34600
34400
34200
34000
33800
33600
33400
33200
33000
32800
32600
32400
32200
32000
31800
31600
31400
31200
31000
30800
30600
30400
30200
30000
29800
29600
29400
29200
29000
28800
28600
28400
28200
28000
27800
27600
27400
27200
27000
26800
26600
26400
26200
26000
25800
25600
25400
25200
25000
24800
24600
24400
24200
24000
23800
23600
23400
23200
23000
22800
22600
22400
22200
22000
21800
21600
21400
21200
21000
20800
20600
20400
20200
20000
19800
19600
19400
19200
19000
18800
18600
18400
18200
18000
17800
17600
17400
17200
17000
16800
16600
16400
16200
16000
15800
15600
15400
15200
15000
14800
14600
14400
14200
14000
13800
13600
13400
13200
13000
12800
12600
12400
12200
12000
11800
11600
11400
11200
11000
10800
10600
10400
10200
10000
9800
9600
9400
9200
9000
8800
8600
8400
8200
8000
7800
7600
7400
7200
7000
6800
6600
6400
6200
6000
5800
5600
5400
5200
5000
4800
4600
4400
4200
4000
3800
3600
3400
3200
3000
2800
2600
2400
2200
2000
1800
1600
1400
1200
1000
800
600
400
200
0
200
400
600
800
1000
1200
1400
1600
1800
2000
2200
2400
2600
2800
3000
3200
3400
3600
3800
4000
4200
4400
4600
4800
5000
5200
5400
5600
5800
6000
6200
6400
6600
6800
7000
7200
7400
7600
7800
8000
8200
8400
8600
8800
9000
9200
9400
9600
9800
10000

PRODUCED BY THE UNITED STATES GEOLOGICAL SURVEY
CONTROL BY USGS AND NOS/DNR
COMPILED FROM AERIAL PHOTOGRAPHS TAKEN 1982
FIELD CHECKED 1983 MAP EDITED 1988
PROJECTION LAMBERT CONFORMAL CONIC
GRID 1000-METER UNIVERSAL TRANSVERSE MERCATOR
1000-FOOT STATE GRID TICS LOUISIANA NORTH ZONE
UTM GRID DECLINATION 095° EAST
1983 MAGNETIC NORTH DECLINATION 2°06' EAST
VERTICAL DATUM NATIONAL GEODETIC VERTICAL DATUM OF 1929
HORIZONTAL DATUM 1927 NORTH AMERICAN DATUM
To place on the predicted North American Datum of 1983,
move the projection lines as shown by dashed corner ticks
(12 meters south and 11 meters east).
There may be private inholdings within the boundaries of any
Federal and State reservations shown on this map.
No distinction made between houses, barns, and other buildings

PROVISIONAL MAP
Produced from original
manuscript drawings. Infor-
mation shown as of date of
photography.

SCALE 1:24 000
1 0 1000 2000 3000 4000 5000 6000 7000 8000 9000 10 000
1 0 1000 2000 3000 4000 5000 6000 7000 8000 9000 10 000
CONTOUR INTERVAL 5 FEET
CONTROL ELEVATIONS SHOWN TO THE NEAREST 0.1 FOOT
OTHER ELEVATIONS SHOWN TO THE NEAREST FOOT
To convert feet to meters multiply by 0.3048
To convert meters to feet multiply by 3.2808
THIS MAP COMPLIES WITH NATIONAL MAP ACCURACY STANDARDS
FOR SALE BY U.S. GEOLOGICAL SURVEY, DENVER, COLORADO 80225, OR RESTON, VIRGINIA 22092
AND LOUISIANA DEPARTMENT OF PUBLIC WORKS, BATON ROUGE, LOUISIANA 70804

ROAD LEGEND

Improved Road
Unimproved Road
Trail

Interstate Route U.S. Route State Route

1	2	3	1 Empire
4	5	6	2 Eudora South
7	8	9	3 Reulands
			4 Fiske
			5 Millikin
			6 Oak Grove
			7 Baxter Bayou
			8 Lake Providence

ADJOINING 7.5' QUADRANGLE NAMES

QUADRANGLE LOCATION

KILBOURNE, LOUISIANA
NE4 OAK GROVE 15' QUADRANGLE
PROVISIONAL EDITION 1988
32091-H3-TF-024