

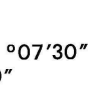
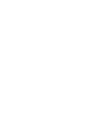
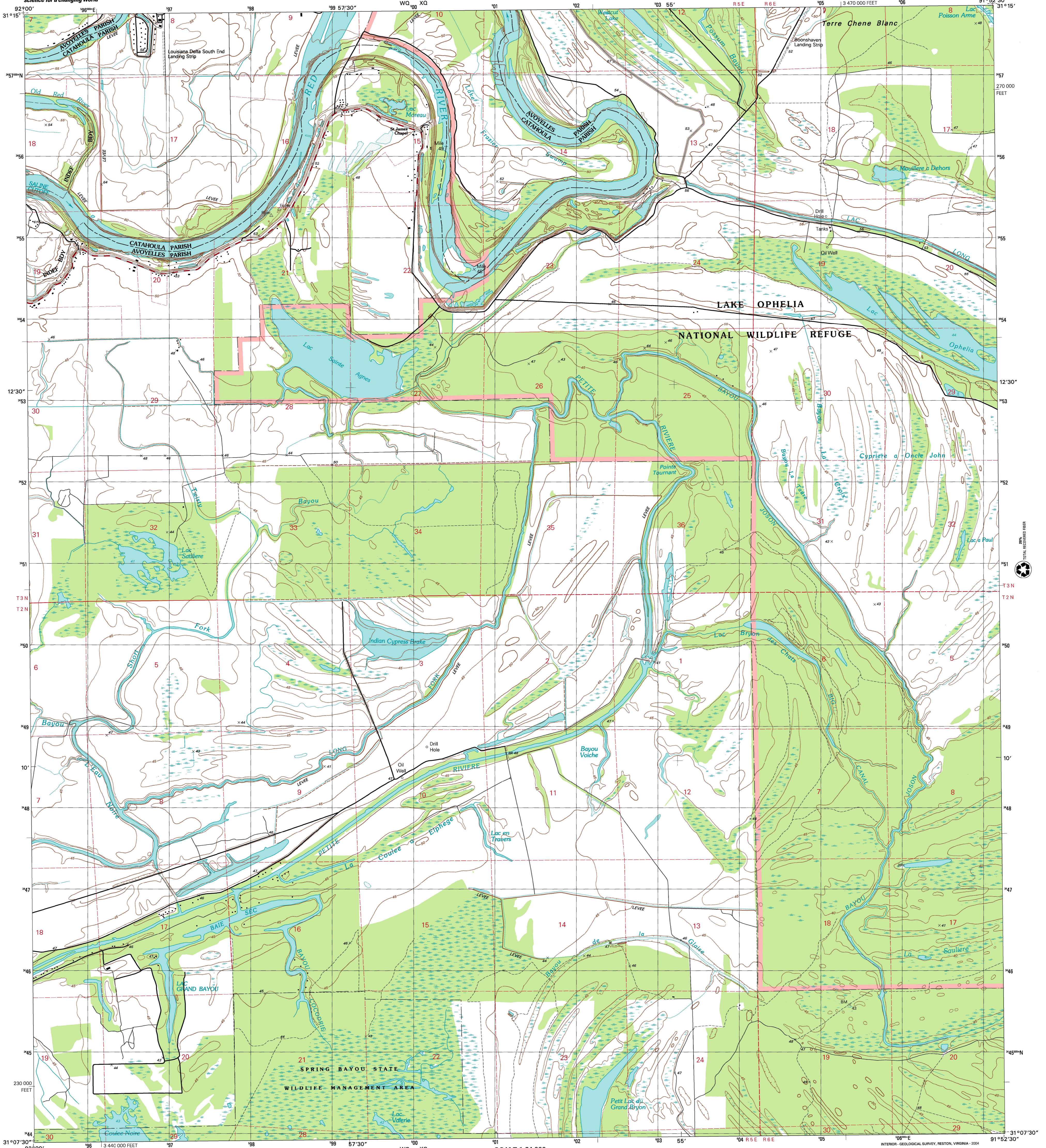


U.S. DEPARTMENT OF THE INTERIOR  
U.S. GEOLOGICAL SURVEY

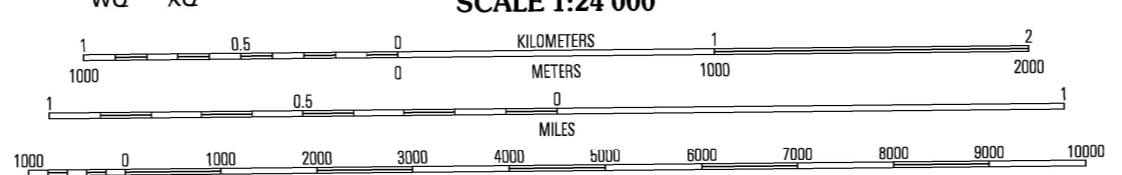
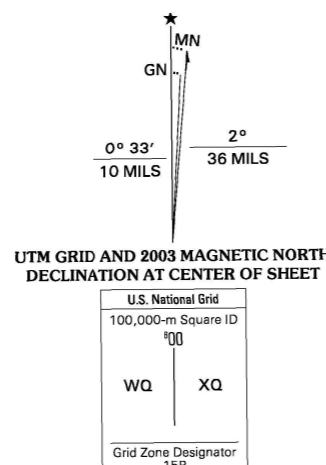


STATE OF LOUISIANA  
DEPARTMENT OF TRANSPORTATION AND DEVELOPMENT

LAC SAINTE AGNES QUADRANGLE  
LOUISIANA  
7.5-MINUTE SERIES (TOPOGRAPHIC)



Produced by the United States Geological Survey  
Topography compiled 1976. Planimetry derived from imagery taken 1999 and other sources. Public Land Survey System and survey control current as of 1977. Boundaries current as of 2003.  
North American Datum of 1983 (NAD 83). Projection and 1 000-meter grid: Universal Transverse Mercator, zone 15R. 10 000-foot ticks: Louisiana Coordinate System of 1983 (north) zone.  
North American Datum of 1927 (NAD 27) is shown by dashed corner ticks. The values of the shift between NAD 83 and NAD 27 for 7.5-minute intersections are obtainable from National Geodetic Survey NADCON software.  
There may be private inholdings within the boundaries of the National or State reservations shown on this map.  
Houses of worship, schools, and other labeled buildings verified 1977.



**ROAD CLASSIFICATION**  
Primary highway hard surface ..... Light-duty road, hard or improved surface .....  
Secondary highway hard surface ..... Unimproved road .....  
Interstate Route U.S. Route State Route

1	2	3	1 Powell Point
2	3	4	2 Lacroix Lake South
3	4	5	3 Acene
4	5	6	4 Marksville North
5	6	7	5 La Nouvelle
6	7	8	6 Marksville South
7	8		7 Moreauville
8			8 Big Bend

**LAC SAINTE AGNES, LA**  
1999  
NIMA 7646 III NW-SERIES V885

THIS MAP COMPLIES WITH NATIONAL MAP ACCURACY STANDARDS FOR SALE BY U.S. GEOLOGICAL SURVEY, P.O. BOX 25286, DENVER, COLORADO 80225 AND LOUISIANA DEPARTMENT OF TRANSPORTATION AND DEVELOPMENT, BATON ROUGE, LOUISIANA 70804. A FOLDER DESCRIBING TOPOGRAPHIC MAPS AND SYMBOLS IS AVAILABLE ON REQUEST.

