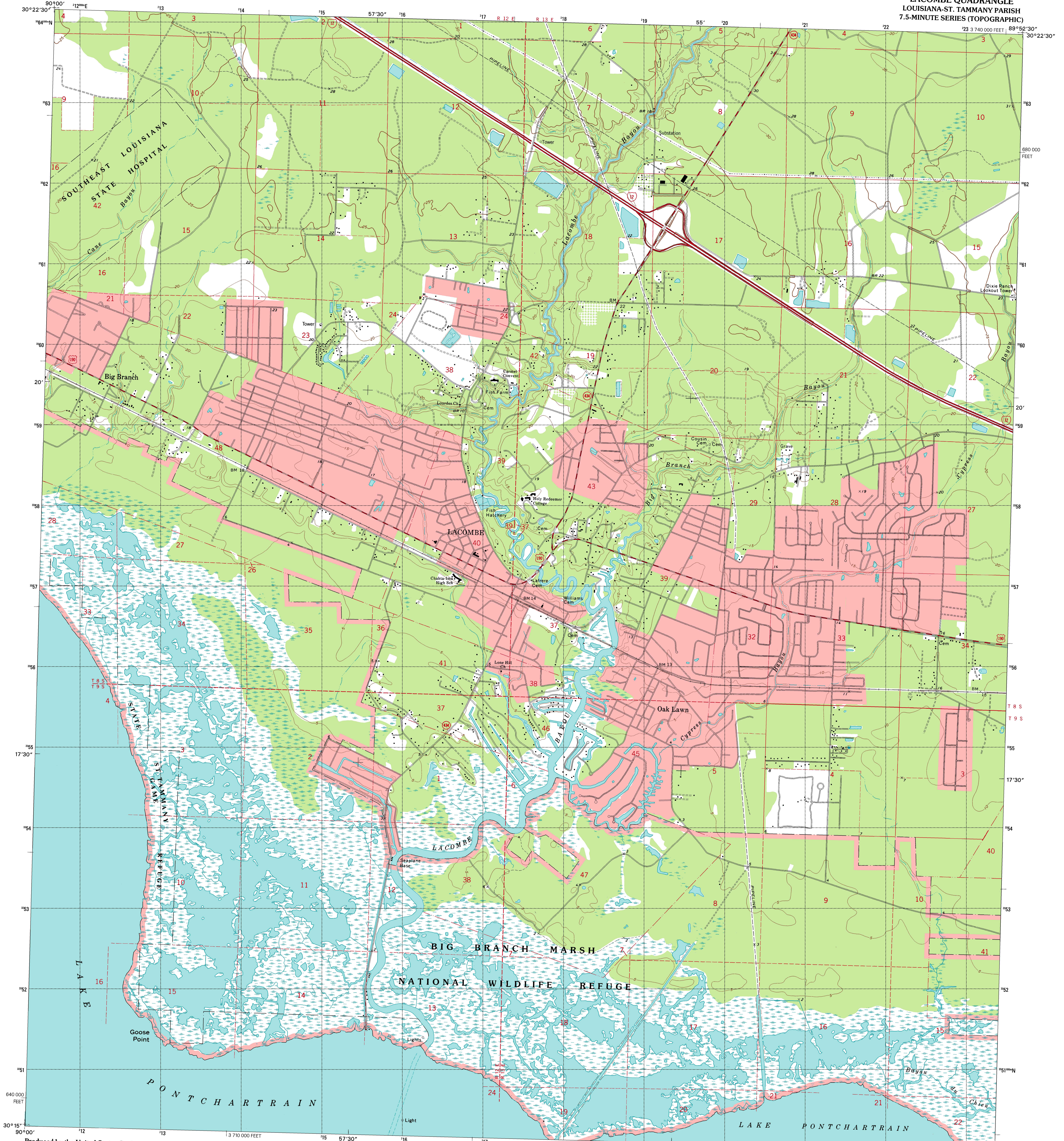


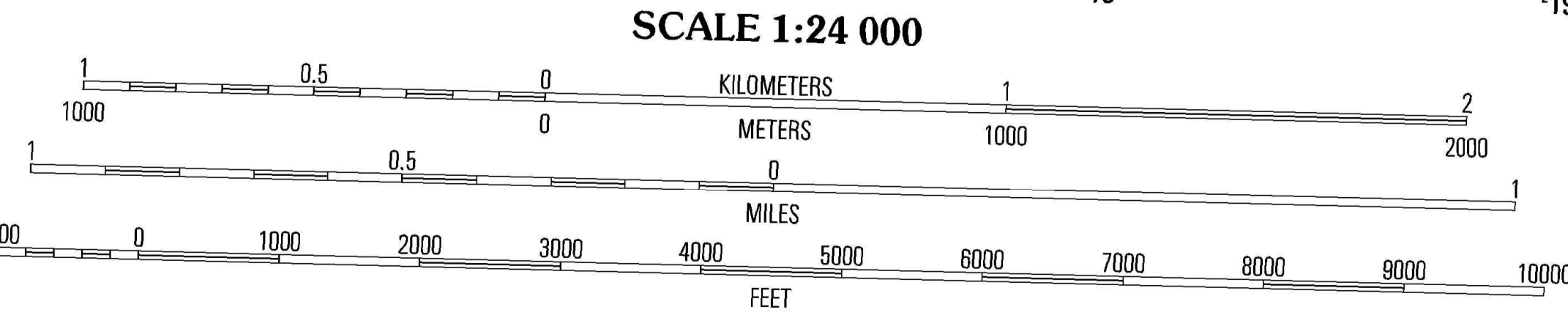
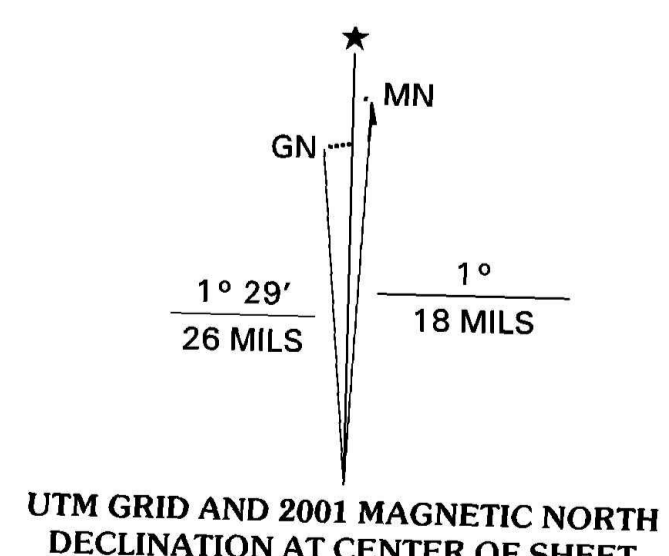


U.S. DEPARTMENT OF THE INTERIOR
U.S. GEOLOGICAL SURVEY

LACOMBE QUADRANGLE
LOUISIANA-ST. TAMMANY PARISH
7.5-MINUTE SERIES (TOPOGRAPHIC)



Produced by the United States Geological Survey
Topography compiled 1969. Planimetry derived from imagery taken 1998 and other sources. Public Land Survey System and survey control current as of 1971. Boundaries current as of 2001
North American Datum of 1983 (NAD 83). Projection and 10,000-meter grid: Universal Transverse Mercator, zone 16
North American Datum of 1927 (NAD 27) is shown by dashed corner ticks. The values of the shift between NAD 83 and NAD 27 for 7.5-minute intersections are obtainable from National Geodetic Survey NADCON software
There may be private inholdings within the boundaries of the National or State reservations shown on this map
This quadrangle covers a subsidence area
Landmark buildings verified 1971



CONTOUR INTERVAL 5 FEET
NATIONAL GEODETIC DATUM OF 1929
TO CONVERT FROM FEET TO METERS, MULTIPLY BY 0.3048



ROAD CLASSIFICATION

Primary highway hard surface	Light-duty road, hard or improved surface
Secondary highway hard surface	Unimproved road
Interstate Route	U.S. Route
	State Route

1	2	3	1 Coalington
4	5	6	2 St. Tammany
7	8	7	3 Highway
		8	4 Mandeville
			5 Slidell
			6 Spanish Fort NE
			7 South Point
			8 North Shore

ADJOINING 7.5' QUADRANGLES
LA 158C

THIS MAP COMPLIES WITH NATIONAL MAP ACCURACY STANDARDS
FOR SALE BY U.S. GEOLOGICAL SURVEY, P.O. BOX 25286, DENVER, COLORADO 80225
AND LOUISIANA DEPARTMENT OF TRANSPORTATION AND DEVELOPMENT, BATON ROUGE, LOUISIANA 70804
A FOLDER DESCRIBING TOPOGRAPHIC MAPS AND SYMBOLS IS AVAILABLE ON REQUEST

LACOMBE, LA
1998

NIMA 8044 IV SW SERIES V885

