

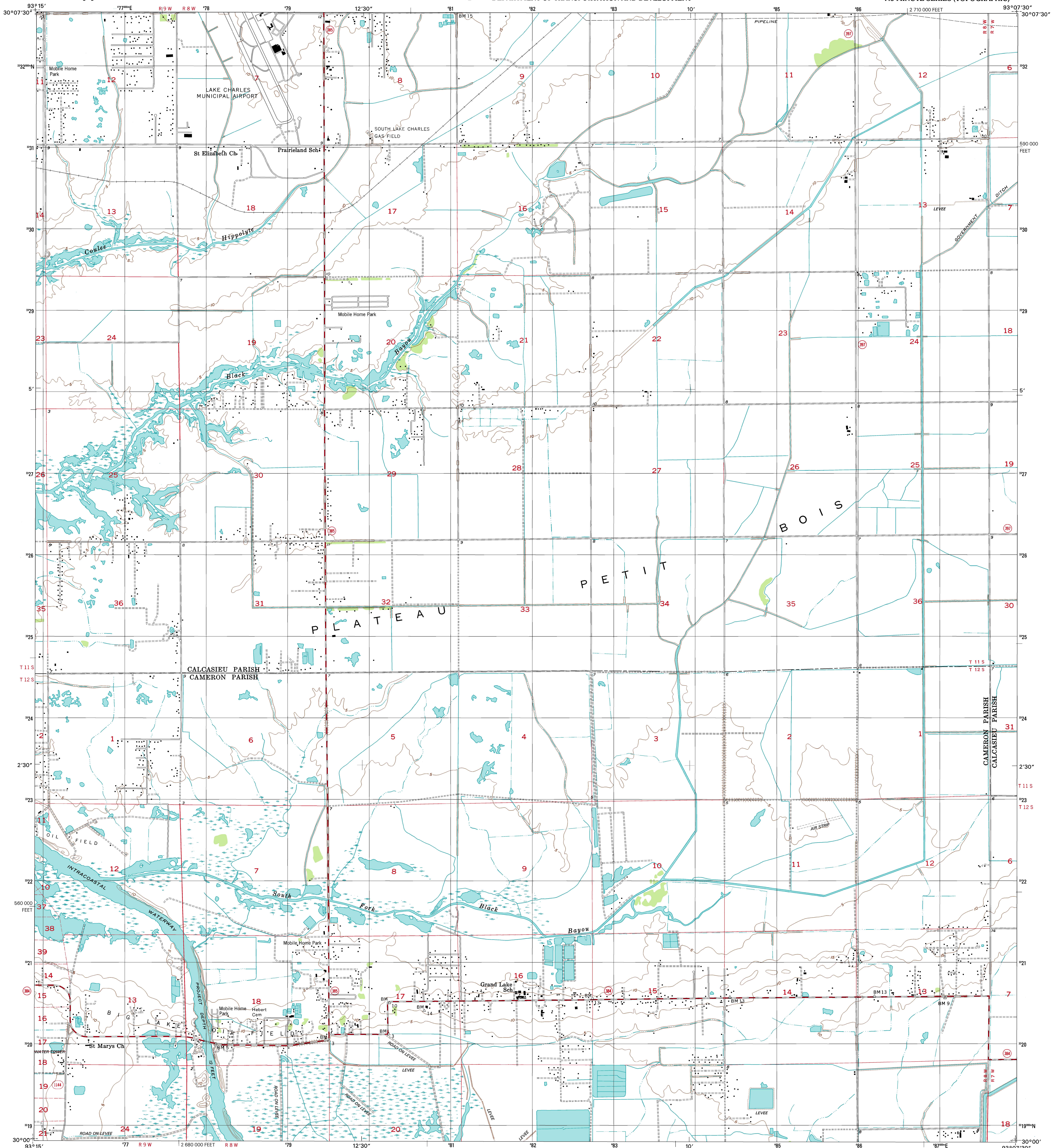


U.S. DEPARTMENT OF THE INTERIOR
U.S. GEOLOGICAL SURVEY

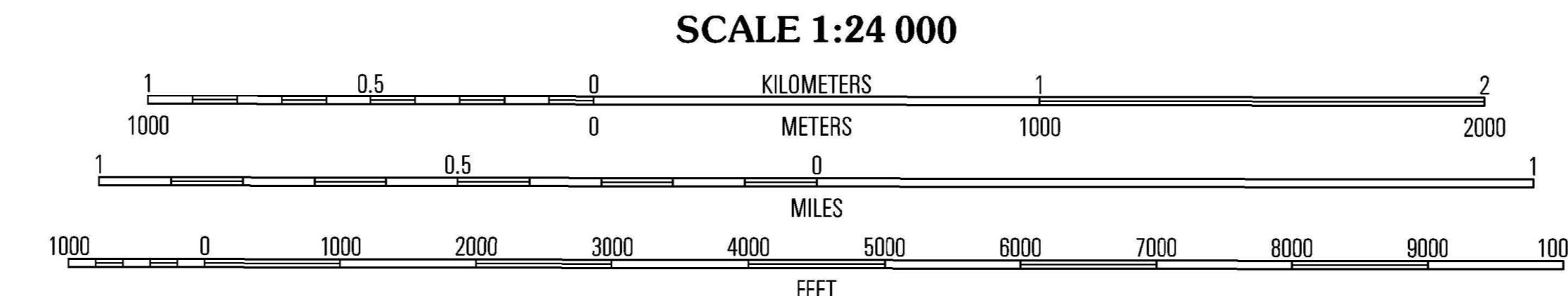
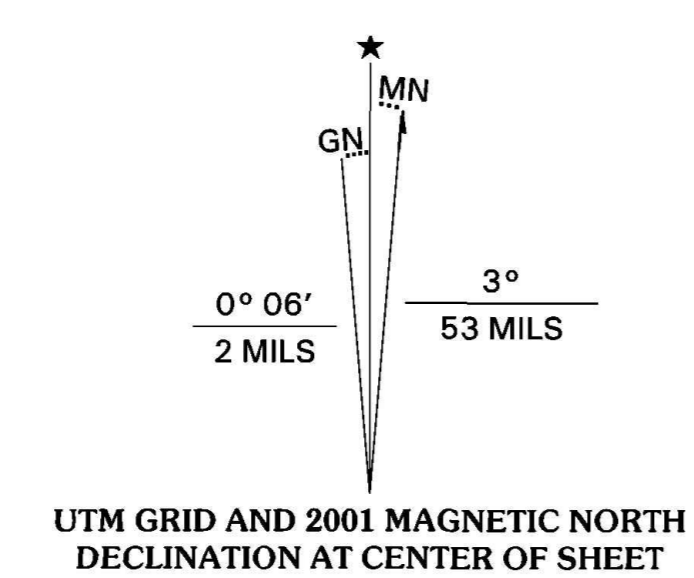


STATE OF LOUISIANA
DEPARTMENT OF TRANSPORTATION AND DEVELOPMENT

LAKE CHARLES SW QUADRANGLE
LOUISIANA
7.5-MINUTE SERIES (TOPOGRAPHIC)



Produced by the United States Geological Survey in cooperation with Louisiana Department of Transportation and Development
Topography compiled 1940. Planimetry derived from imagery taken 1998 and other sources. Public Land Survey System and survey control current as of 1985. Boundaries current as of 2001. North American Datum of 1983 (NAD 83). Projection and 1,000-meter grid: Universal Transverse Mercator, zone 15 10 000-foot ticks: Louisiana Coordinate System of 1983 (south zone)
North American Datum of 1927 (NAD 27) is shown by dashed corner ticks. The values of the shift between NAD 83 and NAD 27 for 7.5-minute intersections are obtainable from National Geodetic Survey NADCON software
Houses of worship, schools, and other labeled buildings verified 1955



CONTOUR INTERVAL 5 FEET
NATIONAL GEODETIC VERTICAL DATUM OF 1929
TO CONVERT FROM FEET TO METERS, MULTIPLY BY 0.3048



ROAD CLASSIFICATION
Primary highway Light-duty road, hard or hard surface Improved surface
Secondary highway Unimproved road
Intestate Route U.S. Route State Route

1	2	3	1 Westlake
2	3	4	2 Lake Charles
3	4	5	3 Iowa
4	5	6	4 Moss Lake
5	6	7	5 Lake Charles SE
6	7	8	6 Hackberry
7	8		7 Sweet Lake
8			8 Boudreaux Lake

ADJOINING 7.5' QUADRANGLE NAMES
LA 178C

LAKE CHARLES SW, LA
1998
NIMA 7344 II SW-SERIES V885



THIS MAP COMPLIES WITH NATIONAL MAP ACCURACY STANDARDS
FOR SALE BY U.S. GEOLOGICAL SURVEY, P.O. BOX 25286, DENVER, COLORADO 80225
AND LOUISIANA DEPARTMENT OF TRANSPORTATION AND DEVELOPMENT, BATON ROUGE, LOUISIANA 70804
A FOLDER DESCRIBING TOPOGRAPHIC MAPS AND SYMBOLS IS AVAILABLE ON REQUEST