

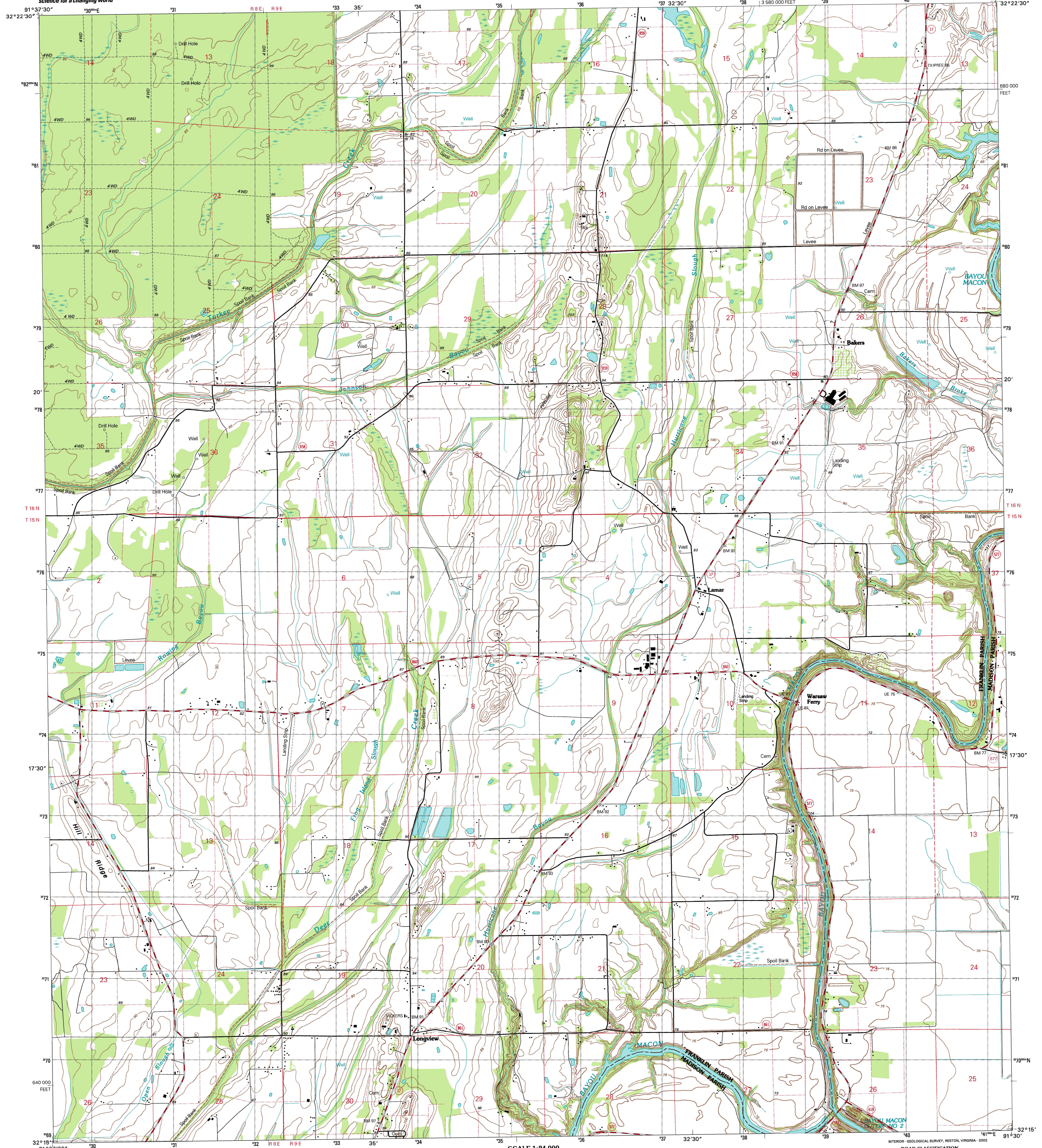


U.S. DEPARTMENT OF THE INTERIOR
U.S. GEOLOGICAL SURVEY

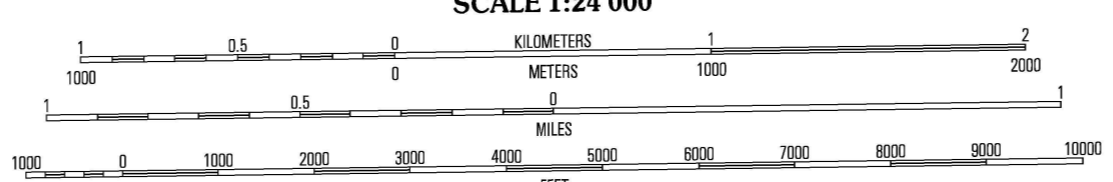
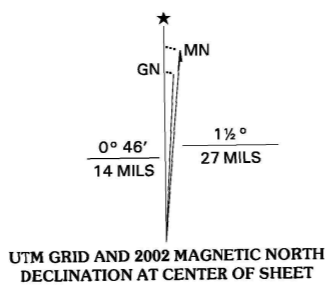


STATE OF LOUISIANA
DEPARTMENT OF TRANSPORTATION AND DEVELOPMENT

LAMAR QUADRANGLE
LOUISIANA
7.5-MINUTE SERIES (TOPOGRAPHIC)



Produced by the U.S. Geological Survey
Revised by the U.S. Forest Service
Topography compiled 1982. Planimetry derived from imagery taken 1978 and other sources. Public Land Survey System and survey control current as of 1984. Boundaries current as of 2002. 1:50,000-scale grid; Universal Transverse Mercator, zone 15 North American Datum of 1983 (NAD 83). Projection and 10 000-foot ticks; Louisiana Coordinate System of 1983 (north zone) North American Datum of 1927 (NAD 27) is shown by dashed corner ticks. The values of the shift between NAD 83 and NAD 27 for 7.5-minute intersections are obtainable from National Geographic Survey WADCON software.
Houses of worship, schools, and other labeled buildings verified 1984.



SCALE 1:24 000
CONTOUR INTERVAL 5 FEET
NATIONAL GEODETIC VERTICAL DATUM OF 1929
TO CONVERT FROM FEET TO METERS, MULTIPLY BY 0.3048



QUADRANGLE LOCATION

ROAD CLASSIFICATION
Primary highway
Secondary highway
Light-duty road, hard or improved surface
Unimproved road
Interstate Route
U.S. Route
State Route

1	2	3	1 Bee Bayou
4	5	4	2 Dunbar
6	7	8	3 Delib
			4 Baskin
			5 Indian Lake
			6 Wamboro
			7 Crowell
			8 Tensas Bluff

THIS MAP COMPLIES WITH NATIONAL MAP ACCURACY STANDARDS
FOR SALE BY U.S. GEOLOGICAL SURVEY, P.O. BOX 25286, DENVER, COLORADO 80225
AND LOUISIANA DEPARTMENT OF TRANSPORTATION AND DEVELOPMENT, BATON ROUGE, LOUISIANA 70804
A FOLDER DESCRIBING TOPOGRAPHIC MAPS AND SYMBOLS IS AVAILABLE ON REQUEST

LAMAR, LA
1998
NIMA 7648 II NE-SERIES V885

