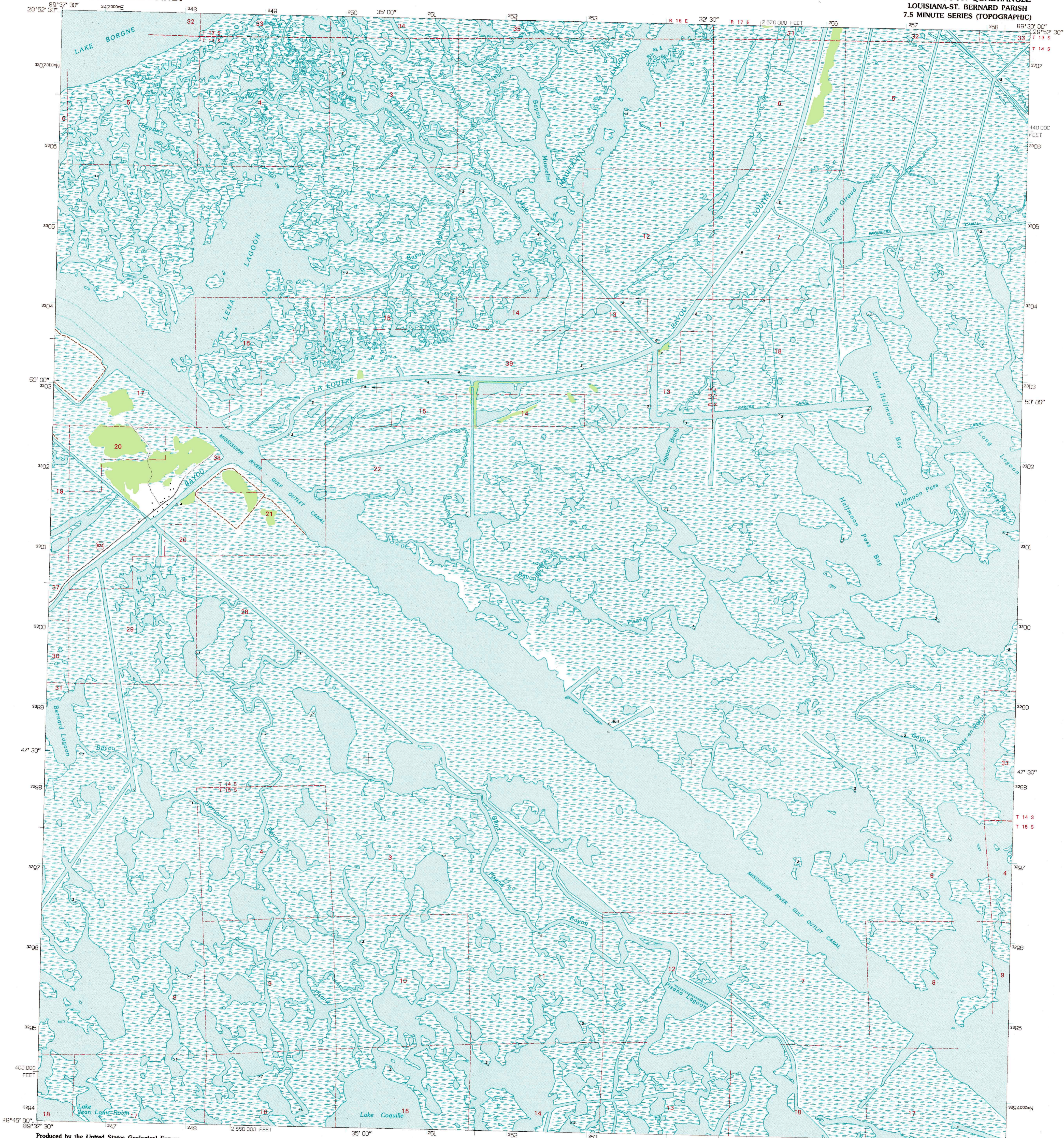


UNITED STATES  
DEPARTMENT OF THE INTERIOR  
GEOLOGICAL SURVEY

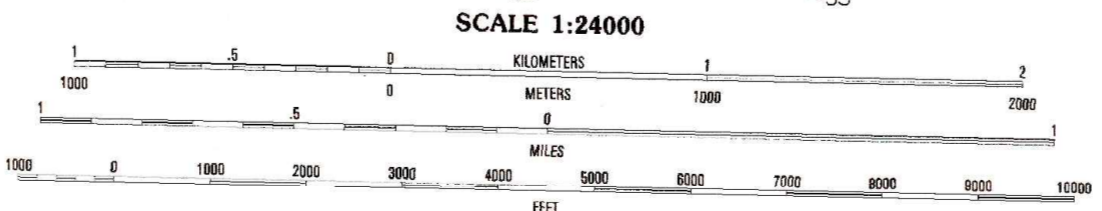
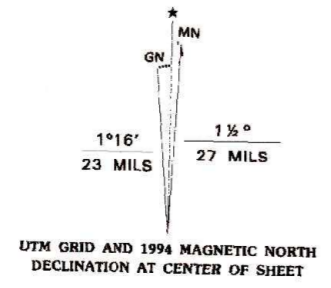
LENA LAGOON QUADRANGLE  
LOUISIANA-ST. BERNARD PARISH  
7.5 MINUTE SERIES (TOPOGRAPHIC)



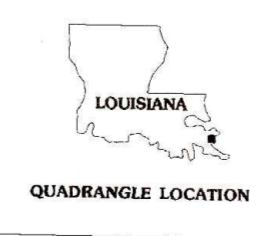
Produced by the United States Geological Survey  
Planimetry by photogrammetric methods from imagery dated 1992  
Topography partly by planetable surveys 1992 and 1995. Revised from  
imagery dated 1989 and other sources. Field checked 1993  
Map edited 1994

North American Datum of 1927 (NAD 27). Projection and  
blue 1000-meter ticks: Universal Transverse Mercator, zone 16  
10 000-foot ticks: Louisiana coordinate system, south zone  
North American Datum of 1983 (NAD 83) is shown by dashed  
corner ticks. The values of the shift between NAD 27 and NAD 83  
for 7.5-minute intersections are obtainable from National Geodetic  
Survey NADCON software

Where omitted, land lines have not been established or are  
not shown because of insufficient data  
This map covers an active subsidence area. Evaluate relief and  
elevation information based on recent sources



ENTIRE AREA BELOW 5 FEET  
NATIONAL GEODETIC VERTICAL DATUM OF 1929



ROAD CLASSIFICATION

Primary highway  
hard surface .....  
Secondary highway  
hard surface .....  
Unimproved road .....

Light-duty road, hard or  
improved surface .....

Interstate Route U.S. Route State Route

QUADRANGLE LOCATION

1	2	3	1 Proctor Point
4	5	6	2 Pointe aux Marchettes
7	8	7	3 Lake Eugene
		8	4 Yecloskey
			5 Lake Etal
			6 Lake Cauto Caballo
			7 Black Bay North
			8 Lake Athansalo

THIS MAP COMPLIES WITH NATIONAL MAP ACCURACY STANDARDS  
FOR SALE BY U.S. GEOLOGICAL SURVEY, DENVER, COLORADO 80225, OR RESTON, VIRGINIA 22092  
AND LOUISIANA DEPARTMENT OF TRANSPORTATION AND DEVELOPMENT, BATON ROUGE, LOUISIANA 70804  
A FOLDER DESCRIBING TOPOGRAPHIC MAPS AND SYMBOLS IS AVAILABLE ON REQUEST

LENA LAGOON, LA.  
29089-G5-TF-024  
1993

DMA 8843 1 SE - SERIES V885