



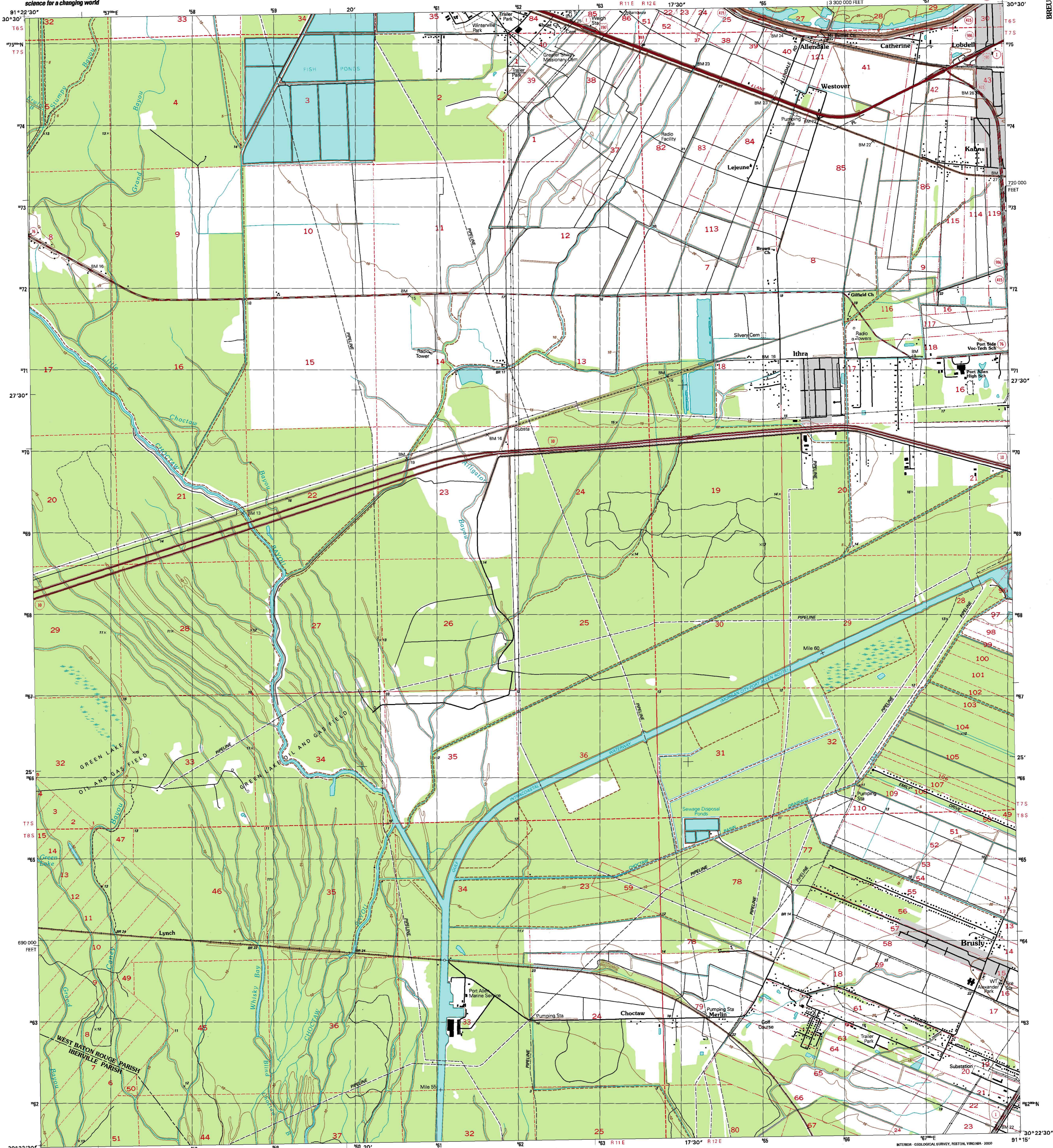
U.S. DEPARTMENT OF THE INTERIOR
U.S. GEOLOGICAL SURVEY



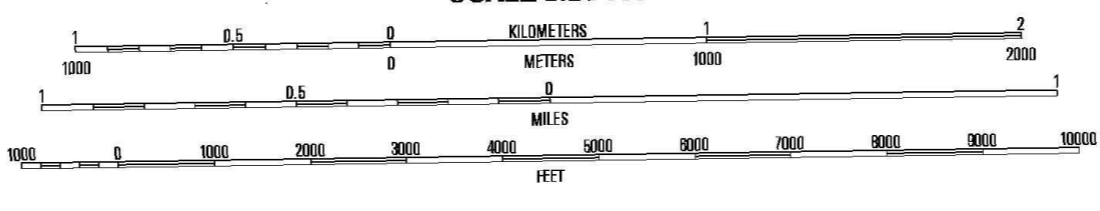
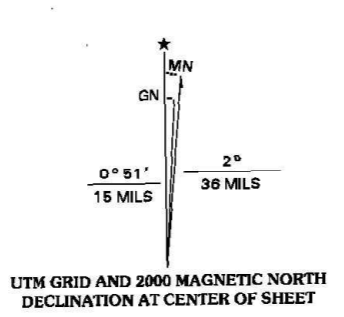
STATE OF LOUISIANA
DEPARTMENT OF TRANSPORTATION AND DEVELOPMENT

LOBDELL QUADRANGLE
LOUISIANA
7.5-MINUTE SERIES (TOPOGRAPHIC)

BREUER BASEMENT
L. COLLETT
W.A.P.



Produced by the United States Geological Survey in cooperation with the Louisiana Department of Transportation and Development
Topography compiled 1993. Planimetry derived from imagery taken 1998 and other sources. Public Land Survey System and survey control current as of 1991
North American Datum of 1983 (NAD 83). Projection and 1000-foot grid: Universal Transverse Mercator, zone 15
10 000-foot ticks: Louisiana Coordinate System of 1983 (south zone)
North American Datum of 1927 (NAD 27) is shown by dashed corner ticks. The values of the shift between NAD 83 and NAD 27 for 7.5-minute intersections are obtainable from National Geodetic Survey NADCON software
This quadrangle covers a subsidence area
Landmark buildings verified 1991



CONTOUR INTERVAL 5 FEET
NATIONAL GEODETIC VERTICAL DATUM OF 1929
TO CONVERT FROM FEET TO METERS, MULTIPLY BY 0.3048

THIS MAP COMPLIES WITH NATIONAL MAP ACCURACY STANDARDS
FOR SALE BY U.S. GEOLOGICAL SURVEY, P.O. BOX 25286, DENVER, COLORADO 80225
AND LOUISIANA DEPARTMENT OF TRANSPORTATION AND DEVELOPMENT, BATON ROUGE, LOUISIANA 70804
A FOLDER DESCRIBING TOPOGRAPHIC MAPS AND SYMBOLS IS AVAILABLE ON REQUEST



QUADRANGLE LOCATION

1	2	3
4	5	6
7	8	

ADJOINING 7.5 QUADRANGLE NAMES

ROAD CLASSIFICATION

Primary highway hard surface	Light-duty road, hard or improved surface
Secondary highway hard surface	Unimproved road
Interstate Route	U.S. Route
	State Route

LOBDELL, LA
1998

NIMA 7744 IV NE-SERIES V885

