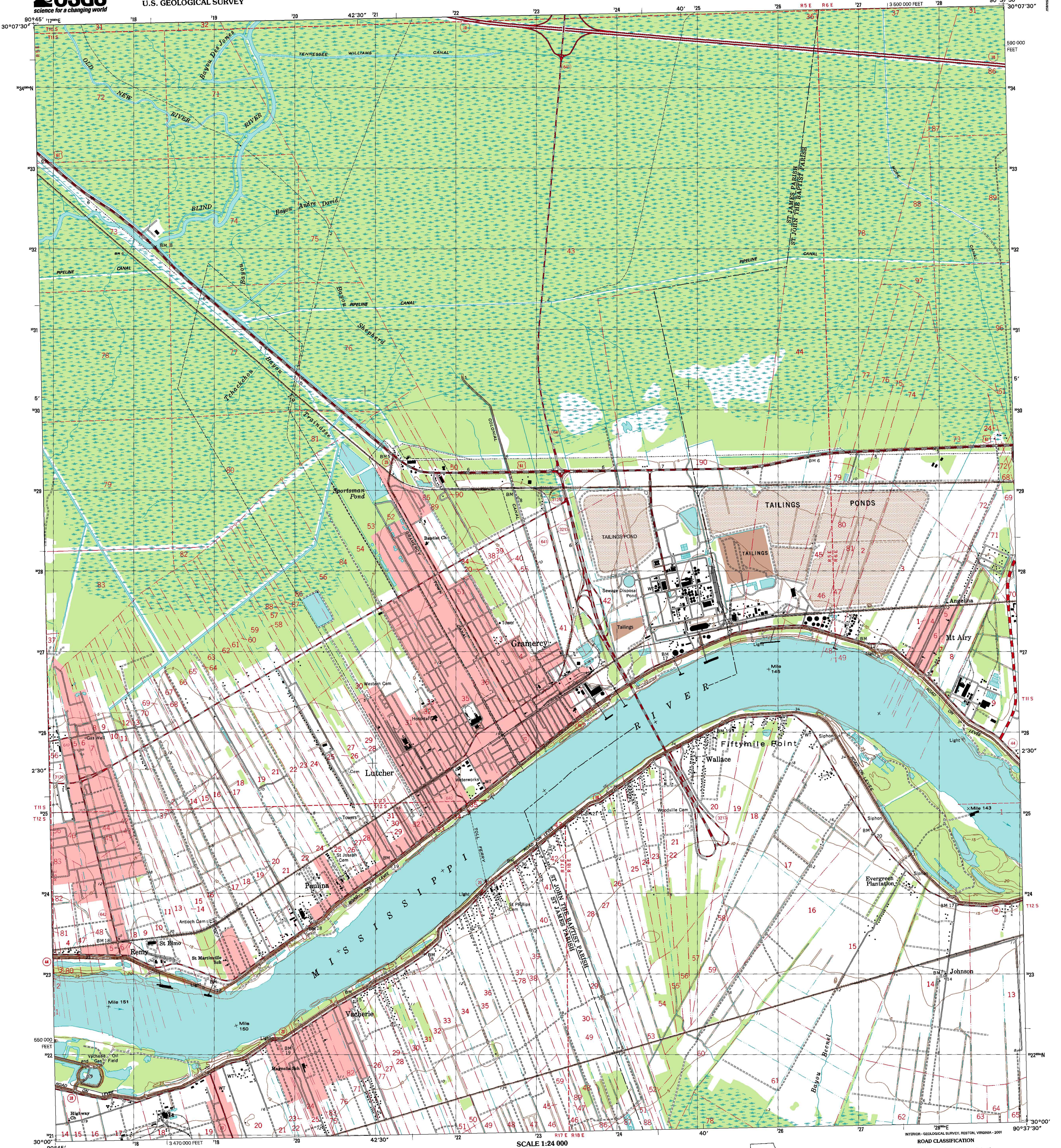


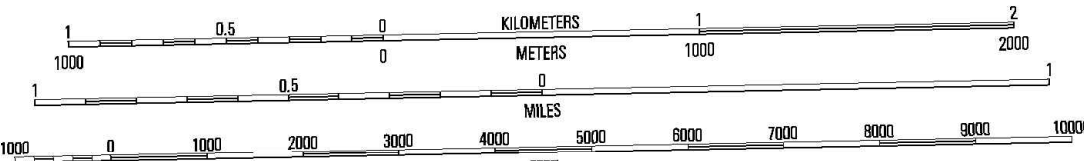


U.S. DEPARTMENT OF THE INTERIOR
U.S. GEOLOGICAL SURVEY

LUTCHER QUADRANGLE
LOUISIANA
7.5-MINUTE SERIES (TOPOGRAPHIC)



SCALE 1:24 000



CONTOUR INTERVAL 5 FEET
NATIONAL GEODETIC VERTICAL DATUM OF 1929
TO CONVERT FROM FEET TO METERS, MULTIPLY BY 0.3048



ROAD CLASSIFICATION

Primary highway	Light-duty road, hard or improved surface
Hard surface	Secondary highway
Hard surface	Unimproved road

I Interstate Route
 U U.S. Route
 S State Route

1	2	3	1 Soreto
2	3	4	2 Mount Airy NW
3	4	5	3 Mount Airy NE
4	5	6	4 Convent
5	6	7	5 Newee
6	7	8	6 Lago
7	8		7 Lower Vacherie
8			8 Lac Des Allemands

LUTCHER, LA
1998

NIMA 7844 II SW-SERIES V885

Produced by the United States Geological Survey
Topography compiled 1961. Planimetry derived from imagery taken 1998 and other sources. Public Land Survey System and survey control current as of 1962.
North American Datum of 1983 (NAD 83). Projection and 10 000-foot ticks: Universal Transverse Mercator, zone 15
North American Datum of 1929 (NAD 27) is shown by dashed corner ticks. The values of the shift between NAD 83 and NAD 27 for 7.5-minute intersections are obtainable from National Geographic Survey NADCON software.
This quadrangle covers a subsidence area
Landmark buildings verified 1962

UTM GRID AND 2000 MAGNETIC NORTH DECLINATION AT CENTER OF SHEET

THIS MAP COMPLIES WITH NATIONAL MAP ACCURACY STANDARDS
FOR SALE BY U.S. GEOLOGICAL SURVEY, P.O. BOX 25286, DENVER, COLORADO 80225
AND LOUISIANA DEPARTMENT OF TRANSPORTATION AND DEVELOPMENT, BATON ROUGE, LOUISIANA 70804
A FOLDER DESCRIBING TOPOGRAPHIC MAPS AND SYMBOLS IS AVAILABLE ON REQUEST