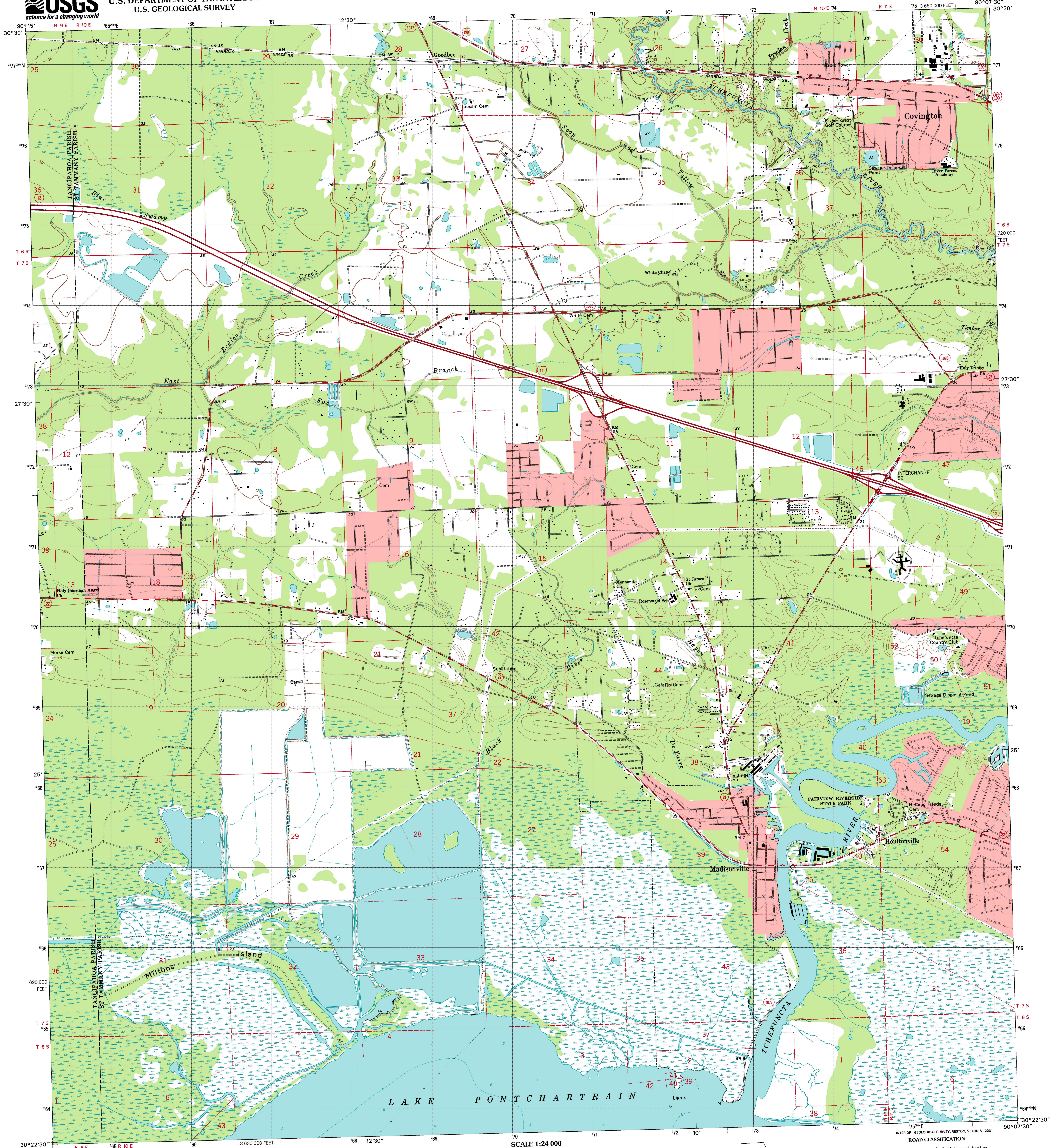


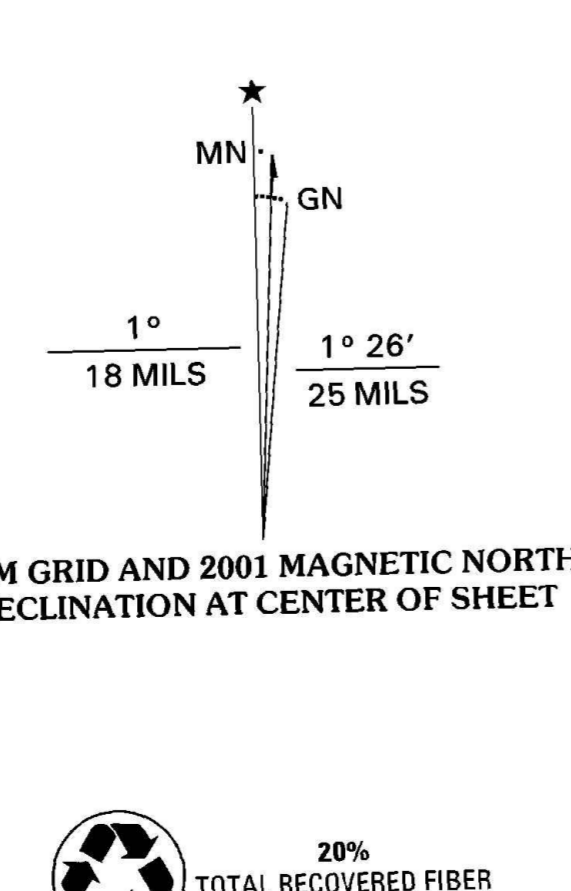


U.S. DEPARTMENT OF THE INTERIOR
U.S. GEOLOGICAL SURVEY

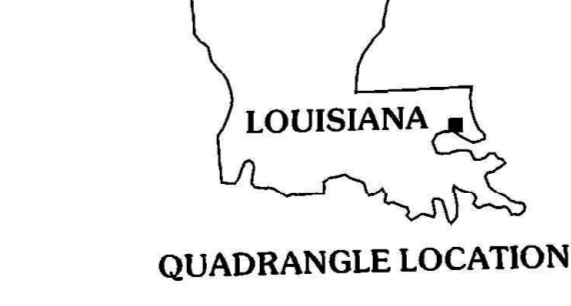
MADISONVILLE QUADRANGLE
LOUISIANA
7.5-MINUTE SERIES (TOPOGRAPHIC)



Produced by the United States Geological Survey
Topography compiled 1965. Planimetry derived from imagery taken 1998 and other sources, Public Land Survey System and survey control current as of 1968. Boundaries current as of 2001.
Selected hydrographic data compiled from USCGS Chart 1269 (1967). This information is not intended for navigational purposes.
North American Datum of 1983 (NAD 83). Projection and 1000-meter grid: Universal Transverse Mercator, zone 15. 10 000-foot ticks: Louisiana Coordinate System of 1983 (south zone). North American Datum of 1927 (NAD 27) is shown by dashed corner ticks. The values of the shift between NAD 83 and NAD 27 for 7.5-minute intersections are obtainable from National Geodetic Survey NADCON software.
This quadrangle covers a subsidence area.
There may be private inholdings within the boundaries of the National or State reservations shown on this map.
Landmark buildings verified 1968.



SCALE 1:24 000
CONTOUR INTERVAL 5 FEET
NATIONAL GEODETIC VERTICAL DATUM OF 1929
TO CONVERT FROM FEET TO METERS, MULTIPLY BY 0.3048
DEPTH CURVES AND SOUNDINGS IN FEET - DATUM IS MEAN LOWER LOW WATER
THE RELATIONSHIP BETWEEN THE TWO DATUMS IS VARIABLE
THE MEAN RANGE OF TIDE IS APPROXIMATELY 0.25 FOOT
THIS MAP COMPLIES WITH NATIONAL MAP ACCURACY STANDARDS
FOR SALE BY U.S. GEOLOGICAL SURVEY, P.O. BOX 25286, DENVER, COLORADO 80225
AND LOUISIANA DEPARTMENT OF TRANSPORTATION AND DEVELOPMENT, BATON ROUGE, LOUISIANA 70804
A FOLDER DESCRIBING TOPOGRAPHIC MAPS AND SYMBOLS IS AVAILABLE ON REQUEST



QUADRANGLE LOCATION

1	2	3	1 Robert
2	3	4	2 Madisonville
3	4	5	3 Waldheim
4	5	6	4 Ponchartraine NE
5	6	7	5 Covington
6	7	8	6 Ponchartraine SE
7	8		7 Covington SW
8			8 Mandeville

ADJOINING 7.5 QUADRANGLES
LA 159A

ROAD CLASSIFICATION

Primary highway hard surface Light-duty road, hard or improved surface

Secondary highway hard surface Unimproved road

Interstate Route U.S. Route State Route

MADISONVILLE, LA
1998
NIMA 7941 1W-SERIES V885

