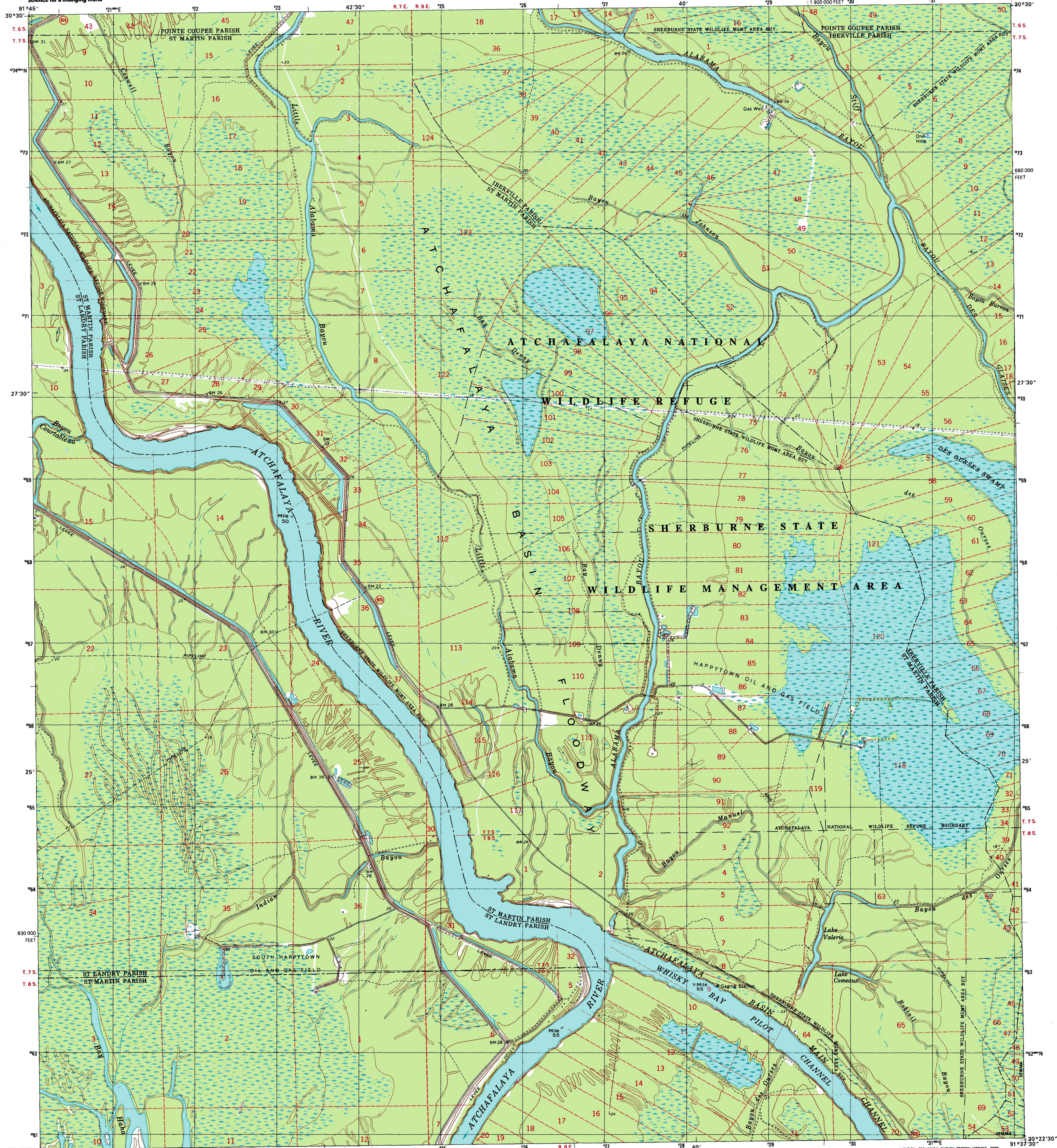


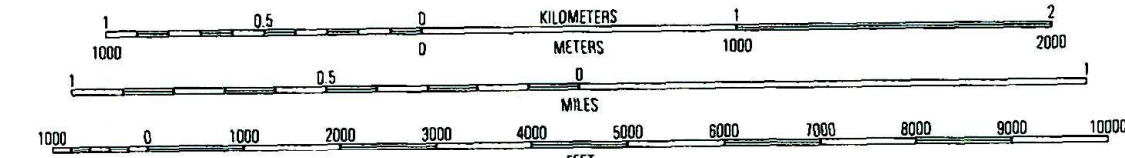
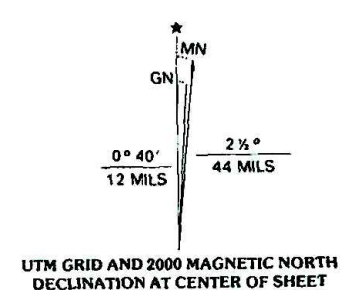


U.S. DEPARTMENT OF THE INTERIOR  
U.S. GEOLOGICAL SURVEY

MARINGOUIN NW QUADRANGLE  
LOUISIANA  
7.5-MINUTE SERIES (TOPOGRAPHIC)



Produced by the United States Geological Survey  
Topography compiled 1968. Planimetry derived from imagery taken 1966 and other sources. Photoinspected using imagery dated 1999; no major culture or drainage changes observed. PLSS and survey control current as of 1968. Boundaries revised 2000.  
North American Datum of 1927 (NAD 27). Projection and 10 000-foot ticks. Louisiana coordinate system, south zone (Lambert conformal conic).  
1000-meter Universal Transverse Mercator grid, zone 15  
North American Datum of 1983 (NAD 83) is shown by dashed corner ticks. The values of the shift between NAD 27 and NAD 83 for 7.5-minute intersections are obtainable from National Geodetic Survey NADCON software.  
There may be private inholdings within the boundaries of the National or State reservations shown on this map.



CONTOUR INTERVAL 5 FEET  
NATIONAL GEODETIC VERTICAL DATUM OF 1929  
TO CONVERT FROM FEET TO METERS, MULTIPLY BY 0.3048

THIS MAP COMPLIES WITH NATIONAL MAP ACCURACY STANDARDS  
FOR SALE BY U.S. GEOLOGICAL SURVEY, P.O. BOX 25286, DENVER, COLORADO 80225  
AND LOUISIANA DEPARTMENT OF TRANSPORTATION AND DEVELOPMENT, BATON ROUGE, LOUISIANA 70804  
A FOLDER DESCRIBING TOPOGRAPHIC MAPS AND SYMBOLS IS AVAILABLE ON REQUEST



1	2	3	1 Knot Springs
4	5	4 Portage	2 Lente
6	7	5 Maringouin	3 Fardoché
		6 Cecile	4 Portage
		7 Butte La Rose	5 Maringouin
		8 Cow Bayou	6 Cecile

ADJOINING 7.5' QUADRANGLE NAMES  
LA 165B

MARINGOUIN NW, LA  
1999  
NIMA 7644 1 NW-SERIES V885

