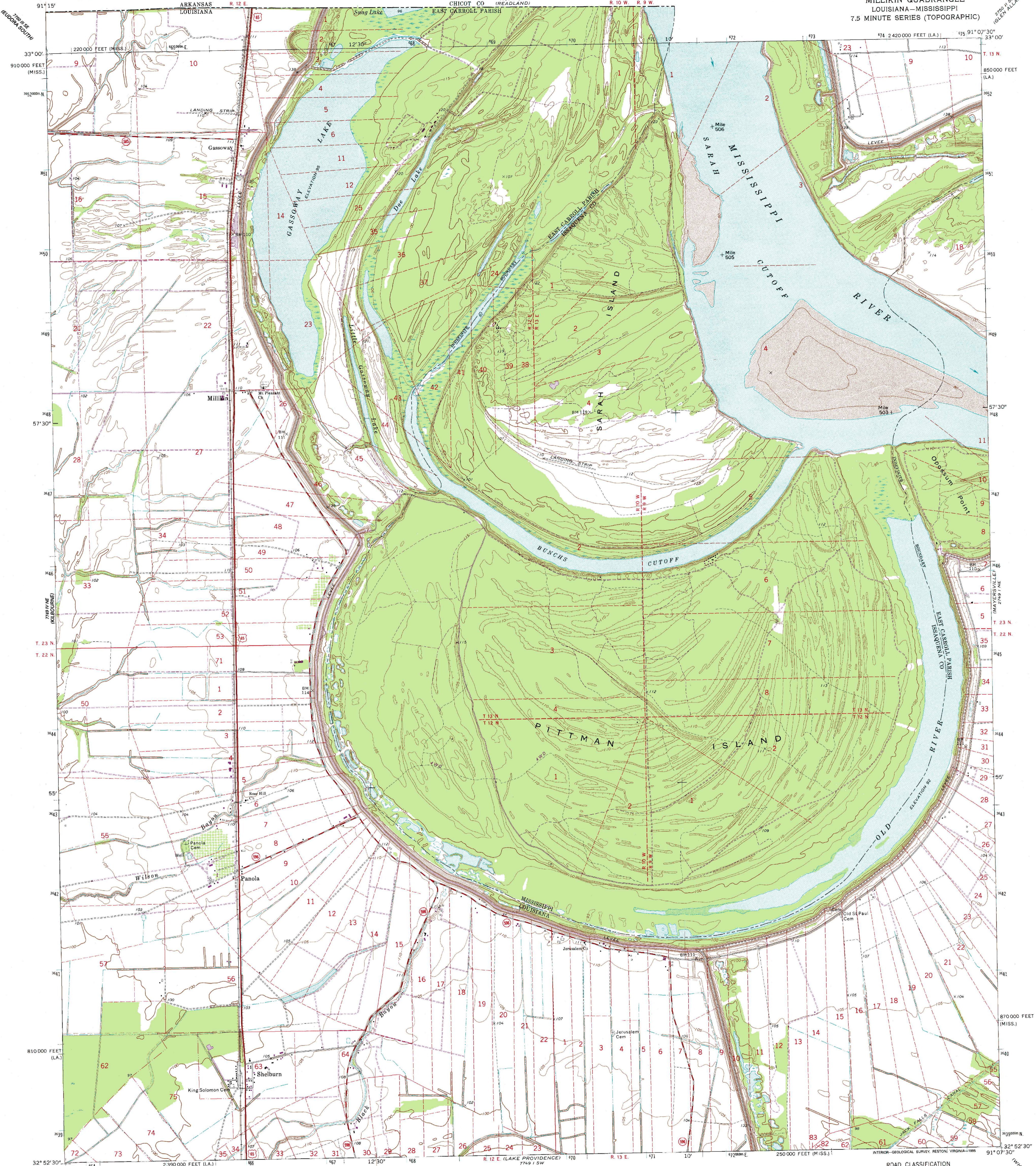
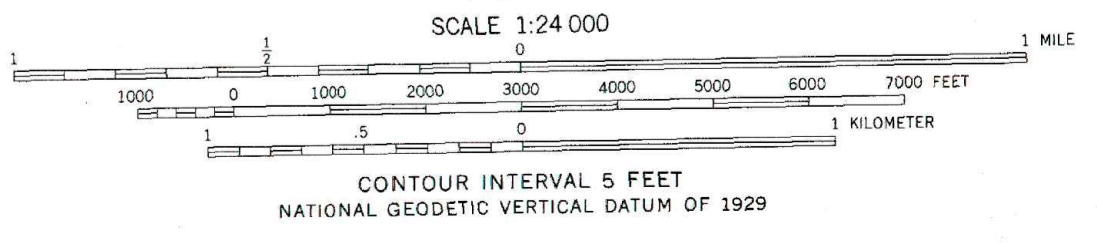
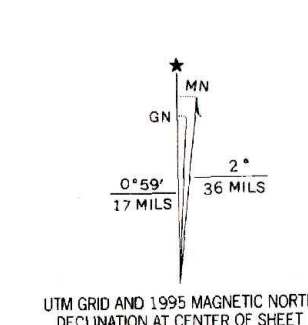


GEOLOGICAL SURVEY

MILLIKIN QUADRANGLE
LOUISIANA—MISSISSIPPI
7.5 MINUTE SERIES (TOPOGRAPHIC)



Produced by the United States Geological Survey
Compiled by photogrammetric methods from imagery dated 1967
Field checked 1970
North American Datum of 1927 (NAD 27)
Projection: Louisiana coordinate system, north zone
(Lambert conformal conic)
10 000-foot ticks: Louisiana coordinate system, north zone and
Mississippi coordinate system, west zone
Blue 1 000-meter Universal Transverse Mercator ticks, zone 15
North American Datum of 1983 (NAD 83) is shown by dashed
corner ticks. The values of the shift between NAD 27 and NAD 83
for 7.5-minute intersections are obtainable from National Geodetic
Survey NADCON software



THIS MAP COMPLIES WITH NATIONAL MAP ACCURACY STANDARDS
FOR SALE BY U.S. GEOLOGICAL SURVEY, DENVER, COLORADO 80225, OR RESTON, VIRGINIA 22092
AND LOUISIANA DEPARTMENT OF TRANSPORTATION AND DEVELOPMENT, BATON ROUGE, LOUISIANA 70804
A FOLDER DESCRIBING TOPOGRAPHIC MAPS AND SYMBOLS IS AVAILABLE ON REQUEST

ROAD CLASSIFICATION

Primary highway, hard surface	Light-duty road, hard or improved surface
Secondary highway, hard surface	Unimproved road

Legend for road types: Interstate Route, U. S. Route, State Route

MILLIKIN, LA-MS
32091-H2-TF-024
1994
DMA 7749 1 NW-SERIES V885

Revisions shown in purple compiled in cooperation with State of Louisiana agencies from imagery dated 1994 and other sources. Map edited 1995
Information shown in purple may not meet USGS content standards and may conflict with previously mapped contours