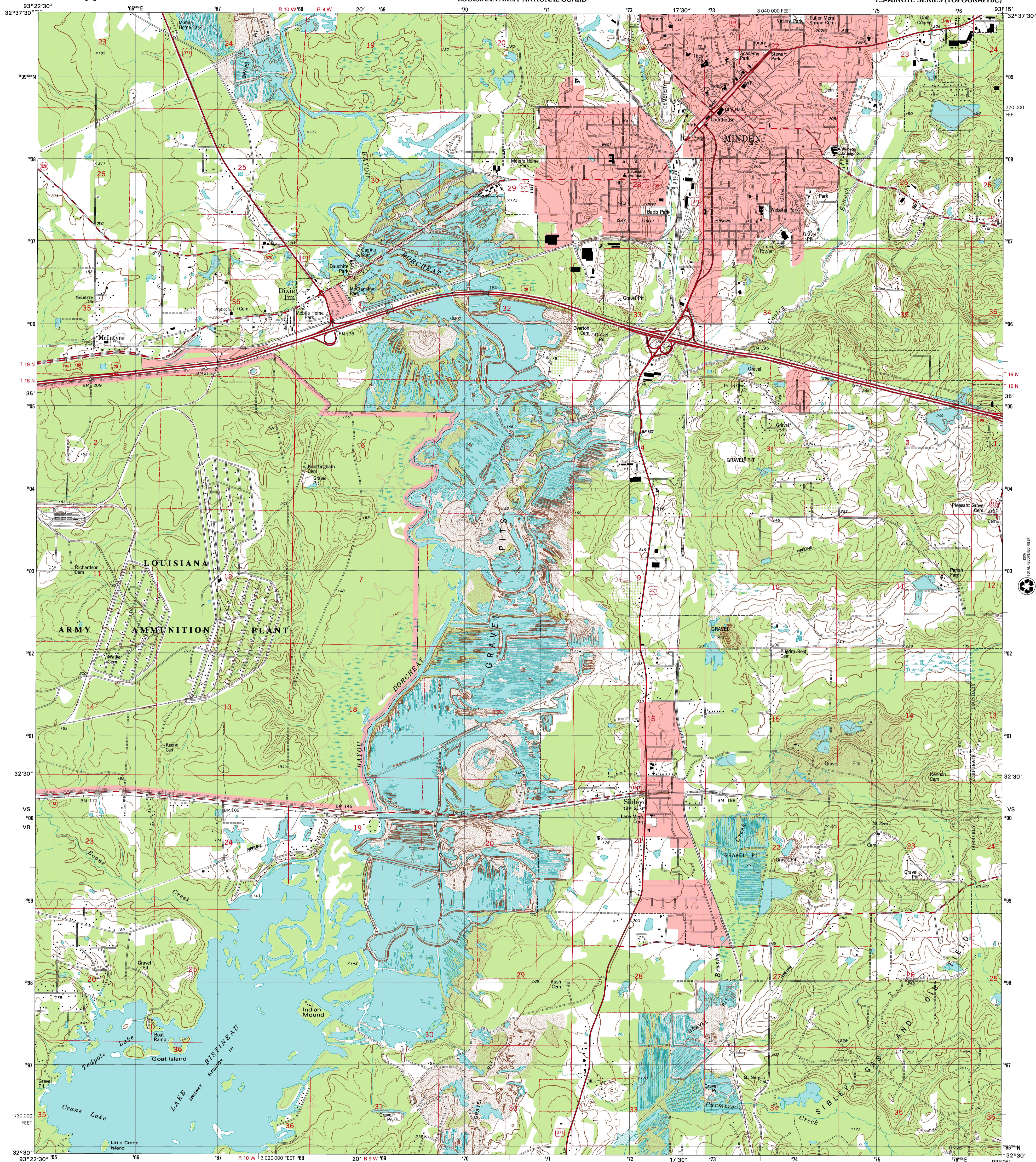




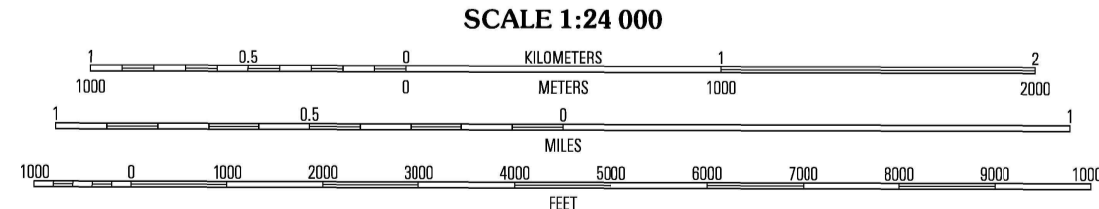
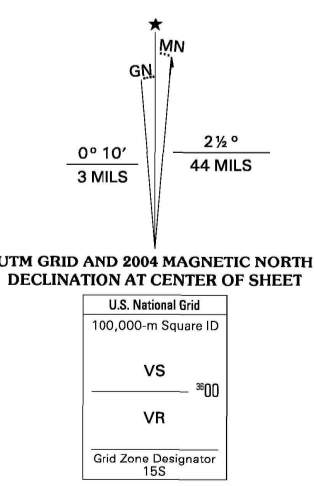
U.S. DEPARTMENT OF THE INTERIOR  
U.S. GEOLOGICAL SURVEY

UNIVERSITY OF LOUISIANA AT LAFAYETTE  
NATIONAL AERONAUTICS AND SPACE ADMINISTRATION  
REGIONAL APPLICATION CENTER  
LOUISIANA ARMY NATIONAL GUARD

MINDEN SOUTH QUADRANGLE  
LOUISIANA-WEBSTER PARISH  
7.5-MINUTE SERIES (TOPOGRAPHIC)



Produced by the United States Geological Survey  
Topography compiled 1976. Planimetry derived from imagery taken 1998 and other sources. Public Land Survey System and survey control current as of 1978. Boundaries current as of 2004  
North American Datum of 1983 (NAD 83). Projection and 1 000-meter grid: Universal Transverse Mercator, zone 15S  
10 000-foot ticks: Louisiana Coordinate System of 1983 (north) zone  
North American Datum of 1927 (NAD 27) is shown by dashed corner ticks. The values of the shift between NAD 83 and NAD 27 for 7.5-minute intersections are obtainable from National Geodetic Survey NADCON software  
There may be private inholdings within the boundaries of the National or State reservations shown on this map  
Houses of worship, schools, and other labeled buildings verified 1978



CONTOUR INTERVAL 10 FEET  
SUPPLEMENTARY CONTOUR INTERVAL 5 FEET  
NATIONAL GEODETIC DATUM OF 1929  
TO CONVERT FROM FEET TO METERS, MULTIPLY BY 0.3048

THIS MAP COMPLIES WITH NATIONAL MAP ACCURACY STANDARDS  
FOR SALE BY U.S. GEOLOGICAL SURVEY, P.O. BOX 25286, DENVER, COLORADO 80225  
AND LOUISIANA DEPARTMENT OF TRANSPORTATION AND DEVELOPMENT, BATON ROUGE, LOUISIANA 70804  
A FOLDER DESCRIBING TOPOGRAPHIC MAPS AND SYMBOLS IS AVAILABLE ON REQUEST



ROAD CLASSIFICATION

Primary highway hard surface	Light-duty road, hard or improved surface
Secondary highway hard surface	Unimproved road
Interstate Route	U.S. Route
	State Route

1	2	3
4	5	6
7	8	

ADJOINING 7.5' QUADRANGLES  
LA 30D

MINDEN SOUTH, LA  
1998  
NIMA 7349 III SE-SERIES V885

