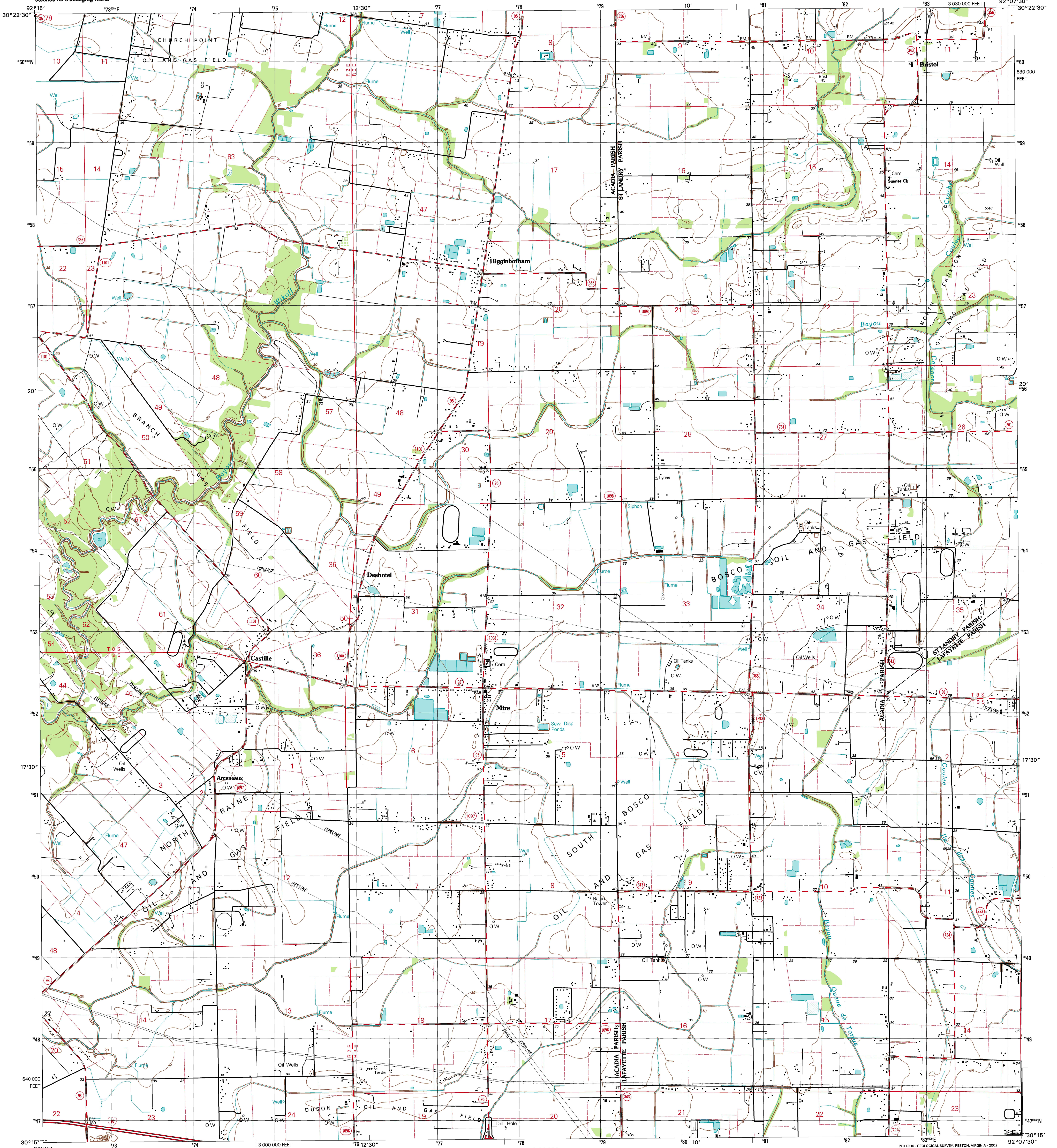


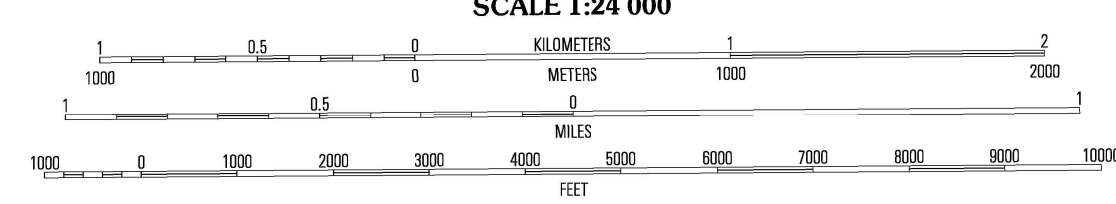
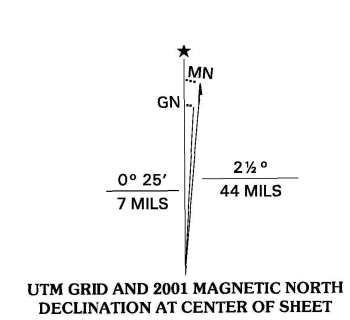


U.S. DEPARTMENT OF THE INTERIOR
U.S. GEOLOGICAL SURVEY

MIRE QUADRANGLE
LOUISIANA
7.5-MINUTE SERIES (TOPOGRAPHIC)



Produced by the United States Geological Survey
Topography compiled 1976. Planimetry derived from imagery taken 1998 and other sources. Public Land Survey System and survey control current as of 1982. Boundaries current as of 2001. North American Datum of 1983 (NAD 83). Projection and 1000-meter grid: Universal Transverse Mercator, zone 15 10 000-foot ticks; Louisiana Coordinate System of 1983 (south zone). North American Datum of 1927 (NAD 27) is shown by dashed corner ticks. The values of the shift between NAD 83 and NAD 27 for 7.5-minute intersections are obtainable from National Geographic Survey NADCON software. Landmark buildings verified 1982.



CONTOUR INTERVAL 5 FEET
NATIONAL GEODETIC VERTICAL DATUM OF 1929
TO CONVERT FROM FEET TO METERS, MULTIPLY BY 0.3048

THIS MAP COMPLIES WITH NATIONAL MAP ACCURACY STANDARDS
FOR SALE BY U.S. GEOLOGICAL SURVEY, P.O. BOX 25286, DENVER, COLORADO 80225
AND LOUISIANA DEPARTMENT OF TRANSPORTATION AND DEVELOPMENT, BATON ROUGE, LOUISIANA 70804
A FOLDER DESCRIBING TOPOGRAPHIC MAPS AND SYMBOLS IS AVAILABLE ON REQUEST



QUADRANGLE LOCATION

1	2	3	1 Richard
4	5	6	2 Church Point
7	8	9	3 Sonnet
			4 Branch
			5 Camero
			6 Crowley East
			7 Dison
			8 Lafayette

ADJOINING 7.5' QUADRANGLES
LA 167C

ROAD CLASSIFICATION
Primary highway hard surface
Secondary highway hard surface
Unimproved road
Light-duty road, hard or improved surface
Interstate Route
U.S. Route
State Route

MIRE, LA
1998

NIMA 7541 1 SW-SERIES V885



91780607947052

Don E. Davis