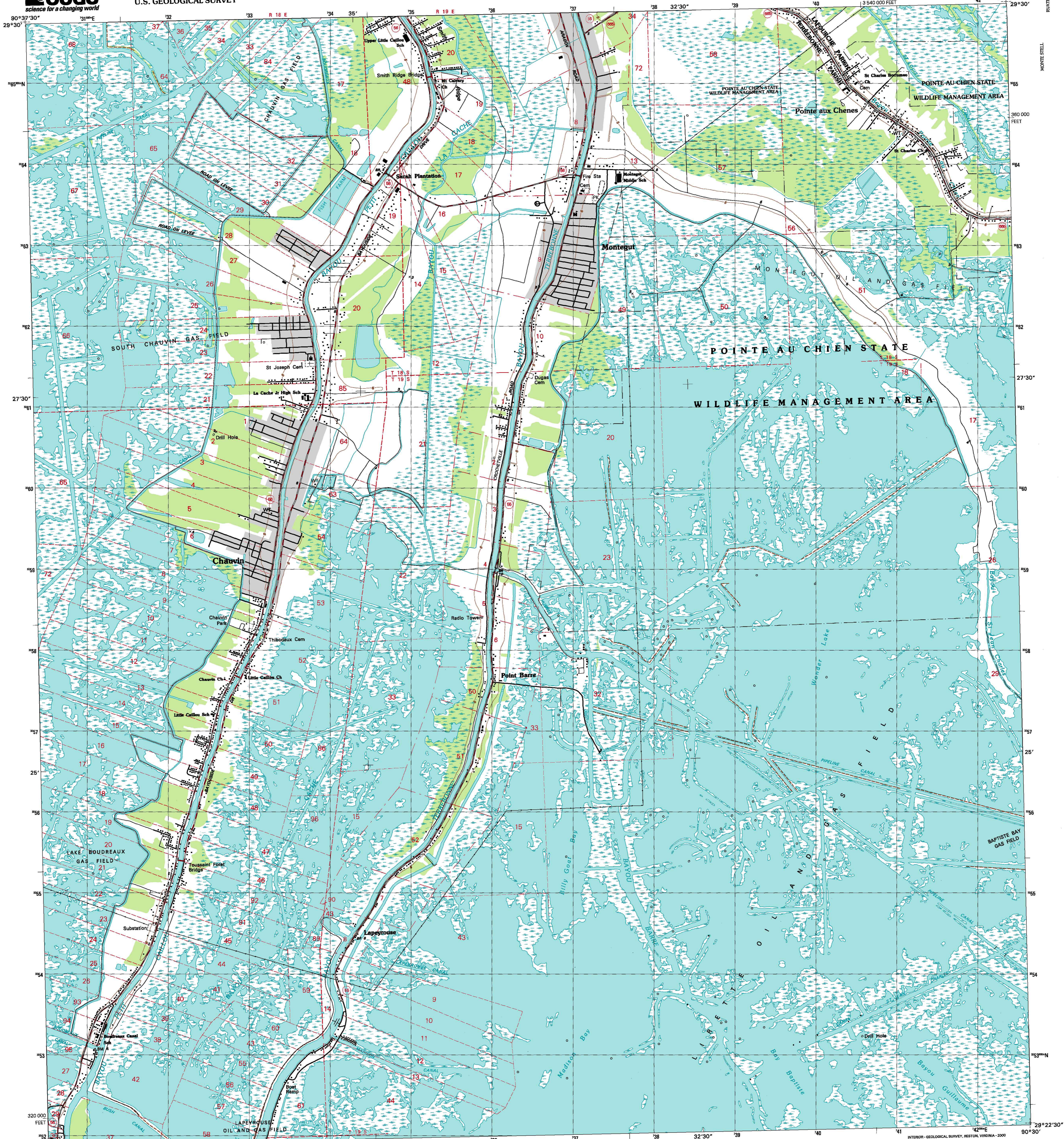


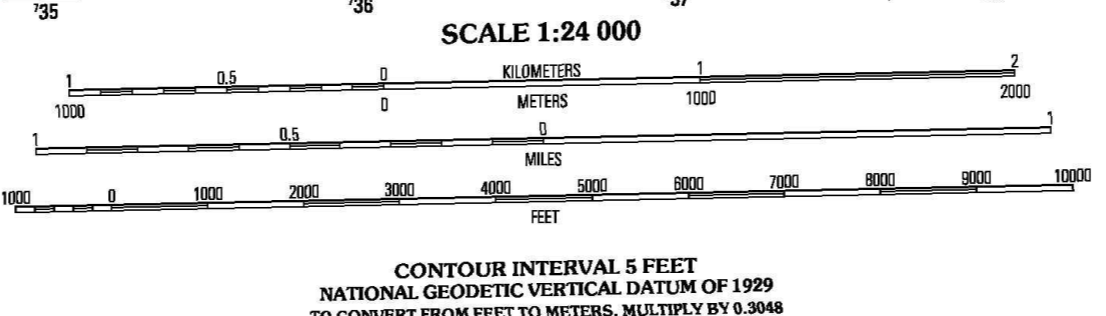
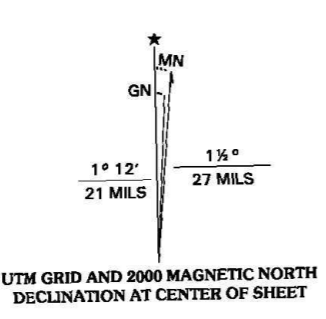


U.S. DEPARTMENT OF THE INTERIOR  
U.S. GEOLOGICAL SURVEY

MONTEGUT QUADRANGLE  
LOUISIANA  
7.5-MINUTE SERIES (TOPOGRAPHIC)



Produced by the United States Geological Survey  
Topography compiled 1989. Planimetry derived from imagery taken 1998 and other sources. Public Land Survey System and survey control current as of 1992.  
North American Datum of 1983 (NAD 83). Projection and 10 000-foot ticks: Louisiana Coordinate System of 1983 (south zone) and 10 000-foot ticks: Louisiana Coordinate System of 1983 (south zone).  
North American Datum of 1927 (NAD 27) is shown by dashed corner ticks. The values of the shift between NAD 83 and NAD 27 for 7.5-minute intersections are obtainable from National Geographic Survey NADCON software.  
There may be private inholdings within the boundaries of the National or State reservations shown on this map.  
This quadrangle covers a subsidence area.  
Where omitted, land lines have not been established or are not shown because of insufficient data.  
Landmark buildings verified 1992.



ROAD CLASSIFICATION  
Primary highway hard surface  
Secondary highway hard surface  
Light-duty road, hard or improved surface  
Unimproved road  
Interstate Route  
U.S. Route  
State Route

1	2	3
4	5	6
7	8	

ADJOINING 7.5' QUADRANGLE NAMES

- 1 Honam
- 2 Bourg
- 3 Larose
- 4 Dulac
- 5 Lake Billy Camp
- 6 Lake Quimbar
- 7 Lake Tambour
- 8 Lake Palmyra

MONTEGUT, LA  
1998  
NIMA 7642 I NE-SERIES V885

THIS MAP COMPLIES WITH NATIONAL MAP ACCURACY STANDARDS  
FOR SALE BY U.S. GEOLOGICAL SURVEY, P.O. BOX 25286, DENVER, COLORADO 80225  
AND LOUISIANA DEPARTMENT OF TRANSPORTATION AND DEVELOPMENT, BATON ROUGE, LOUISIANA 70804  
A FOLDER DESCRIBING TOPOGRAPHIC MAPS AND SYMBOLS IS AVAILABLE ON REQUEST

