

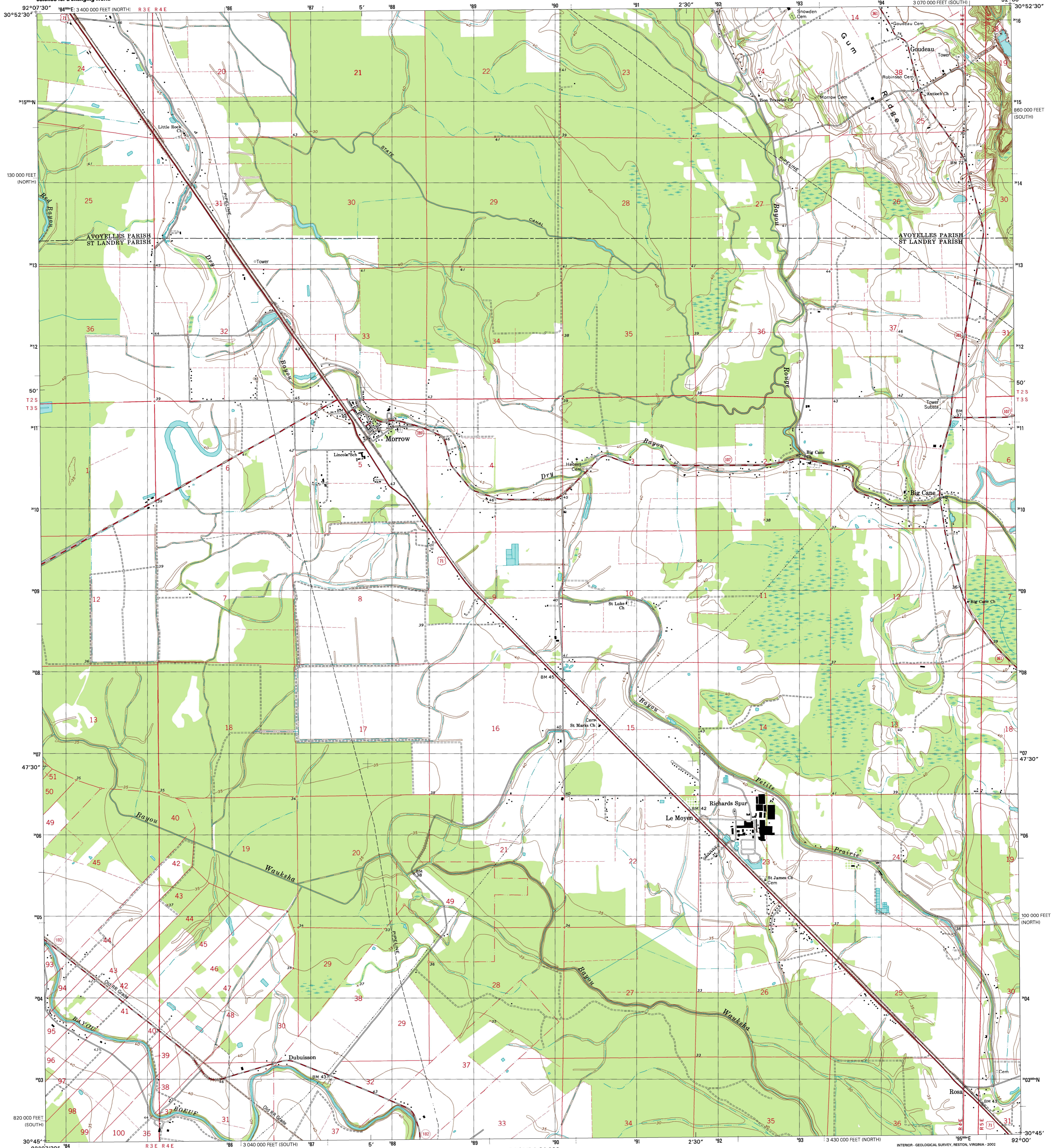


U.S. DEPARTMENT OF THE INTERIOR
U.S. GEOLOGICAL SURVEY

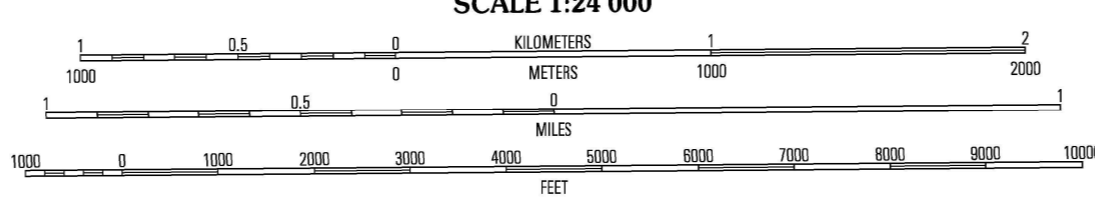
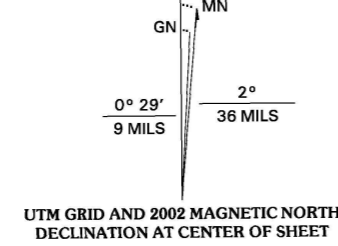


STATE OF LOUISIANA
DEPARTMENT OF TRANSPORTATION AND DEVELOPMENT

MORROW QUADRANGLE
LOUISIANA
7.5-MINUTE SERIES (TOPOGRAPHIC)



Produced by the United States Geological Survey
in cooperation with Louisiana Department of
Transportation and Development
Topography compiled 1965. Planimetry derived from imagery
taken 1998 and other sources. Public Land Survey System and
survey control current as of 1965. Boundaries current as of 2002
North American Datum of 1983 (NAD 83). Projection and
1 000-meter grid: Universal Transverse Mercator, zone 15
10 000-foot tick; Louisiana Coordinate System of 1983
(south and north zones)
North American Datum of 1927 (NAD 27) is shown by dashed
corner ticks. The values of the shift between NAD 83 and
NAD 27 for 7.5-minute intersections are obtainable from
National Geodetic Survey NADCON software
Houses of worship, schools, and other labeled buildings verified 1965



CONTOUR INTERVAL 5 FEET
NATIONAL GEODETIC VERTICAL DATUM OF 1929
TO CONVERT FROM FEET TO METERS, MULTIPLY BY 0.3048



QUADRANGLE LOCATION

ROAD CLASSIFICATION

Primary highway hard surface	Light-duty road, hard or improved surface
Secondary highway hard surface	Unimproved road
Interstate Route	U.S. Route
	State Route

1	2	3	1 Bankie
			2 Contout
			3 Flacheville
4	5		4 Whiteville
			5 Bayou Jack
			6 Tate Cove
6	7	8	7 Reggs
			8 Palmetto

ADJOINING 7.5 QUADRANGLES
LA 1320

MORROW, LA
1998

NIMA 7545 1 SE-SERIES V885



ISBN 0-607-47861-4
9 780607 978614



THIS MAP COMPLIES WITH NATIONAL MAP ACCURACY STANDARDS
FOR SALE BY U.S. GEOLOGICAL SURVEY, P.O. BOX 25286, DENVER, COLORADO 80225
AND LOUISIANA DEPARTMENT OF TRANSPORTATION AND DEVELOPMENT, BATON ROUGE, LOUISIANA 70804
A FOLDER DESCRIBING TOPOGRAPHIC MAPS AND SYMBOLS IS AVAILABLE ON REQUEST