

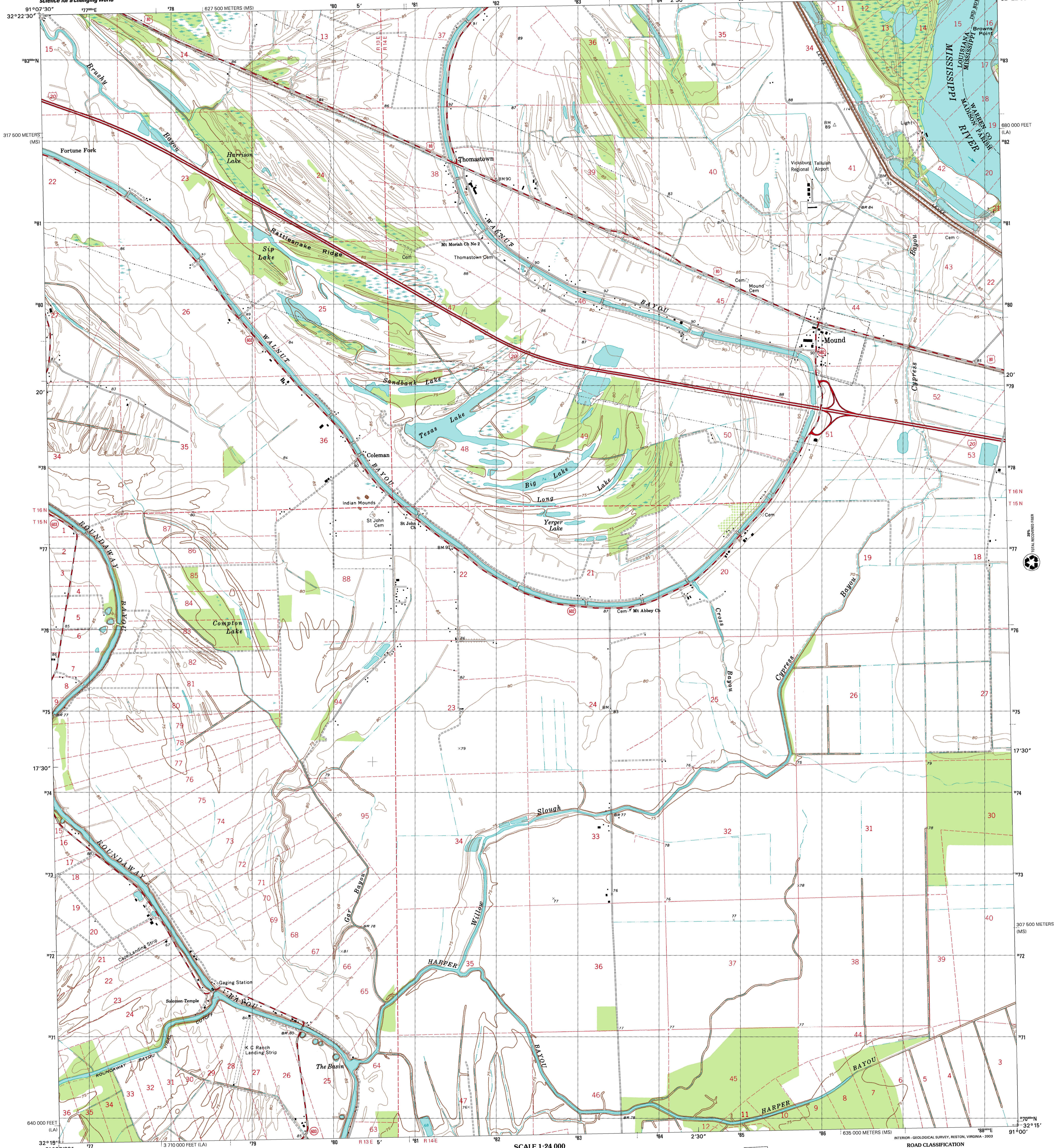


U.S. DEPARTMENT OF THE INTERIOR
U.S. GEOLOGICAL SURVEY

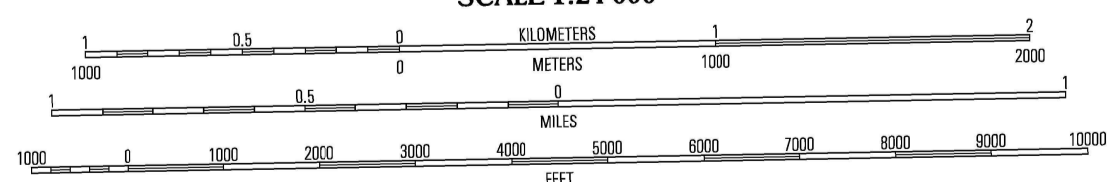
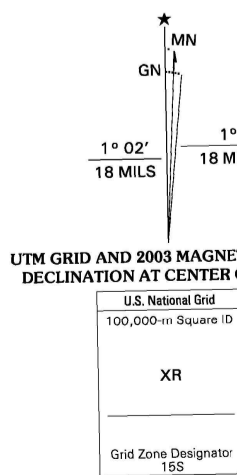


STATE OF LOUISIANA
DEPARTMENT OF TRANSPORTATION AND DEVELOPMENT

MOUND QUADRANGLE
LOUISIANA-MISSISSIPPI
7.5-MINUTE SERIES (TOPOGRAPHIC)



Produced by the United States Geological Survey
Topography compiled 1963. Plantometry derived from imagery taken 1998 and other sources. Public Land Survey System and survey control current as of 1962. Boundaries current as of 2002.
North American Datum of 1983 (NAD 83). Projection and 1000-meter grid: Universal Transverse Mercator, zone 15S
1000-foot ticks: Louisiana Coordinate System of 1983 (north zone)
2500-meter ticks: Mississippi Coordinate System of 1983 (west zone)
North American Datum of 1927 (NAD 27) is shown by dashed corner ticks. The values of the shift between NAD 83 and NAD 27 for 7.5-minute intersections are obtainable from National Geodetic Survey NADCON software.
Houses of worship, schools, and other labeled buildings verified 1962.



CONTOUR INTERVAL 5 FEET
NATIONAL GEODETIC VERTICAL DATUM OF 1929
TO CONVERT FROM FEET TO METERS, MULTIPLY BY 0.3048

THIS MAP COMPLIES WITH NATIONAL MAP ACCURACY STANDARDS
FOR SALE BY U.S. GEOLOGICAL SURVEY, P.O. BOX 25286, DENVER, COLORADO 80225
AND LOUISIANA DEPARTMENT OF TRANSPORTATION AND DEVELOPMENT, BATON ROUGE, LOUISIANA 70804
A FOLDER DESCRIBING TOPOGRAPHIC MAPS AND SYMBOLS IS AVAILABLE ON REQUEST



QUADRANGLE LOCATION

1	2	3	1 Tallah
4	5	6	2 Ashby
7	8	9	3 Long Lake
			4 Fortune Fork
			5 Vicksburg West
			6 Somerset
			7 Belford
			8 Yokema

ROAD CLASSIFICATION
Primary highway
hard surface
Secondary highway
hard surface
Interstate Route
Unimproved road
Light-duty road, hard or
improved surface
U.S. Route
State Route

MOUND, LA-MS
1998

NIMA 7748 I SE-SERIES V885

