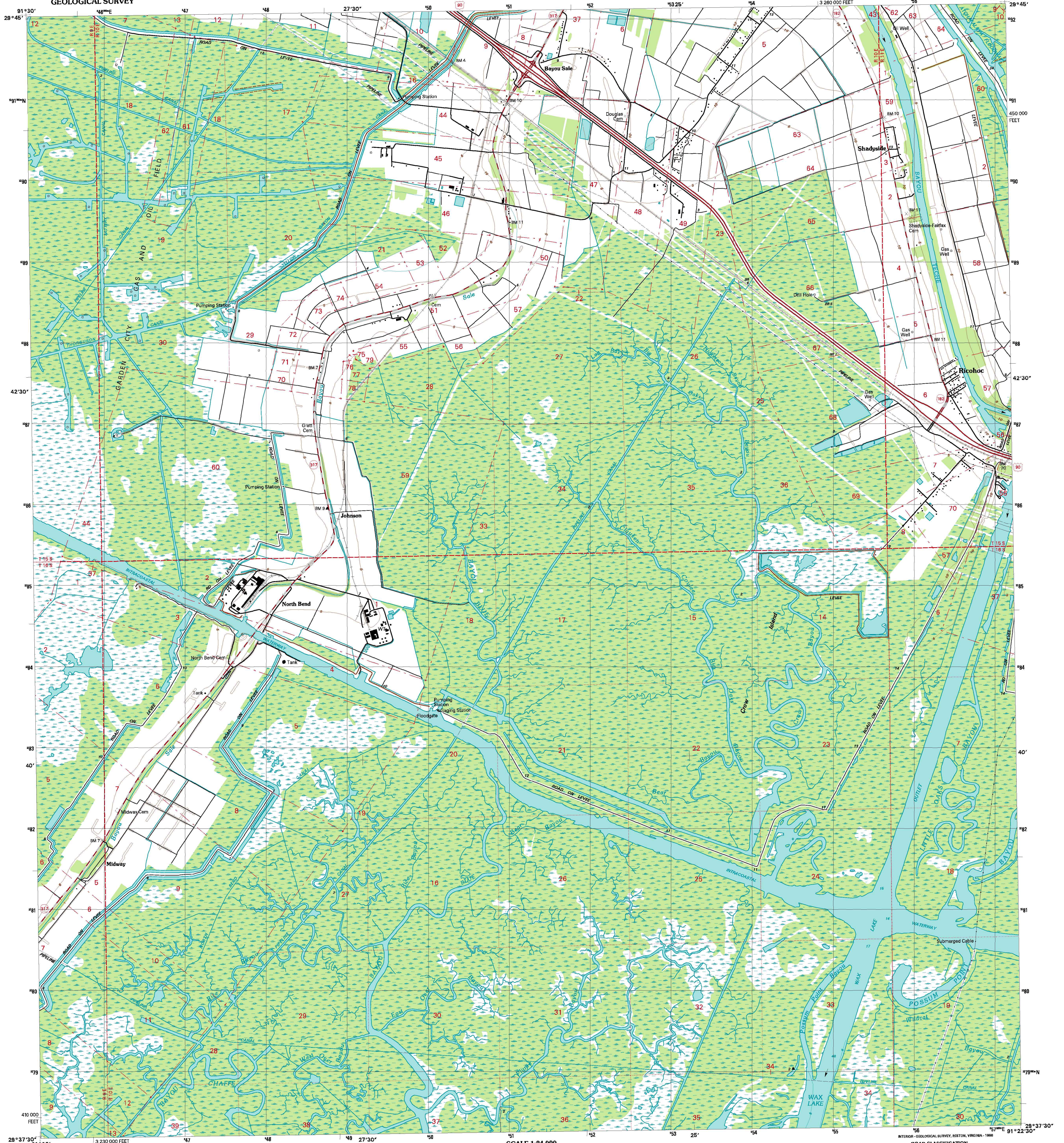
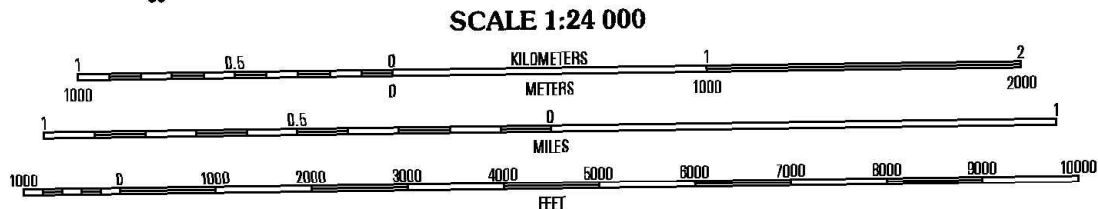
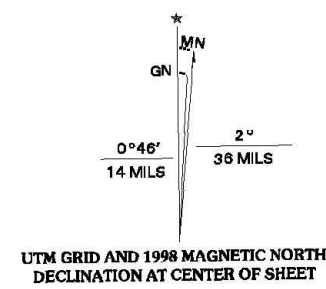


UNITED STATES
DEPARTMENT OF THE INTERIOR
GEOLOGICAL SURVEY

NORTH BEND QUADRANGLE
LOUISIANA, ST. MARY PARISH
7.5-MINUTE SERIES (TOPOGRAPHIC)



Produced by the United States Geological Survey
Topography compiled 1966. Planimetry derived from imagery
taken 1994. Public Land Survey System and survey control
current as of 1966. Contours that conflict with updated
major features are dashed.
Selected hydrographic data compiled from NOS Charts 880 (1966)
and 1276 (1965). This information is not intended for navigational
purposes.
North American Datum of 1983 (NAD 83). Projection and
1 000-meter grid: Universal Transverse Mercator, zone 15
10 000-foot ticks; Louisiana Coordinate System of 1983
(south zone).
North American Datum of 1927 (NAD 27) is shown by dashed
corner ticks. The values of the shift between NAD 83 and
NAD 27 for 7.5-minute intersections are obtainable from
National Geodetic Survey NADCON software.
Bench marks have been adjusted to 1964 leveling unless
otherwise indicated by parenthetical dates.
Dotted land lines established by private survey.
This quadrangle covers a subsidence area.



CONTOUR INTERVAL 5 FEET
NATIONAL GEODETIC VERTICAL DATUM OF 1929
TO CONVERT FROM FEET TO METERS, MULTIPLY BY 0.3048
DEPTH CURVES AND SOUNDINGS IN FEET, DATUM IS MEAN LOWER LOW WATER
THE RELATIONSHIP BETWEEN THE TWO DATUMS IS VARIABLE
SHORELINE SHOWN REPRESENTS THE APPROXIMATE LINE OF MEAN HIGH WATER
THE MEAN RANGE OF TIDE IS 1/2 FOOT
THIS MAP COMPLETES NATIONAL MAP ACCURACY STANDARDS
FOR SALE BY U.S. GEOLOGICAL SURVEY, P. O. BOX 25286, DENVER, COLORADO 80225
AND LOUISIANA DEPARTMENT OF TRANSPORTATION AND DEVELOPMENT, BATON ROUGE, LOUISIANA 70804
A FOLDER DESCRIBING TOPOGRAPHIC MAPS AND SYMBOLS IS AVAILABLE ON REQUEST



QUADRANGLE LOCATION

1	2	3	1 Franklin
			2 Centerville
			3 Tiger Island
4		5	4 Ellendale
			5 Patterson
			6 Point Chartrand
			7 Belle Isle
			8 Lake Salve

ADJOINING 7.5 QUADRANGLE NAMES

ROAD CLASSIFICATION
Primary highway
hard surface Light-duty road, hard or
improved surface
Secondary highway
hard surface Unimproved road
Interstate Route U.S. Route State Route

NORTH BEND, LA
1994

NIMA 7743 III NW-SERIES V885

