

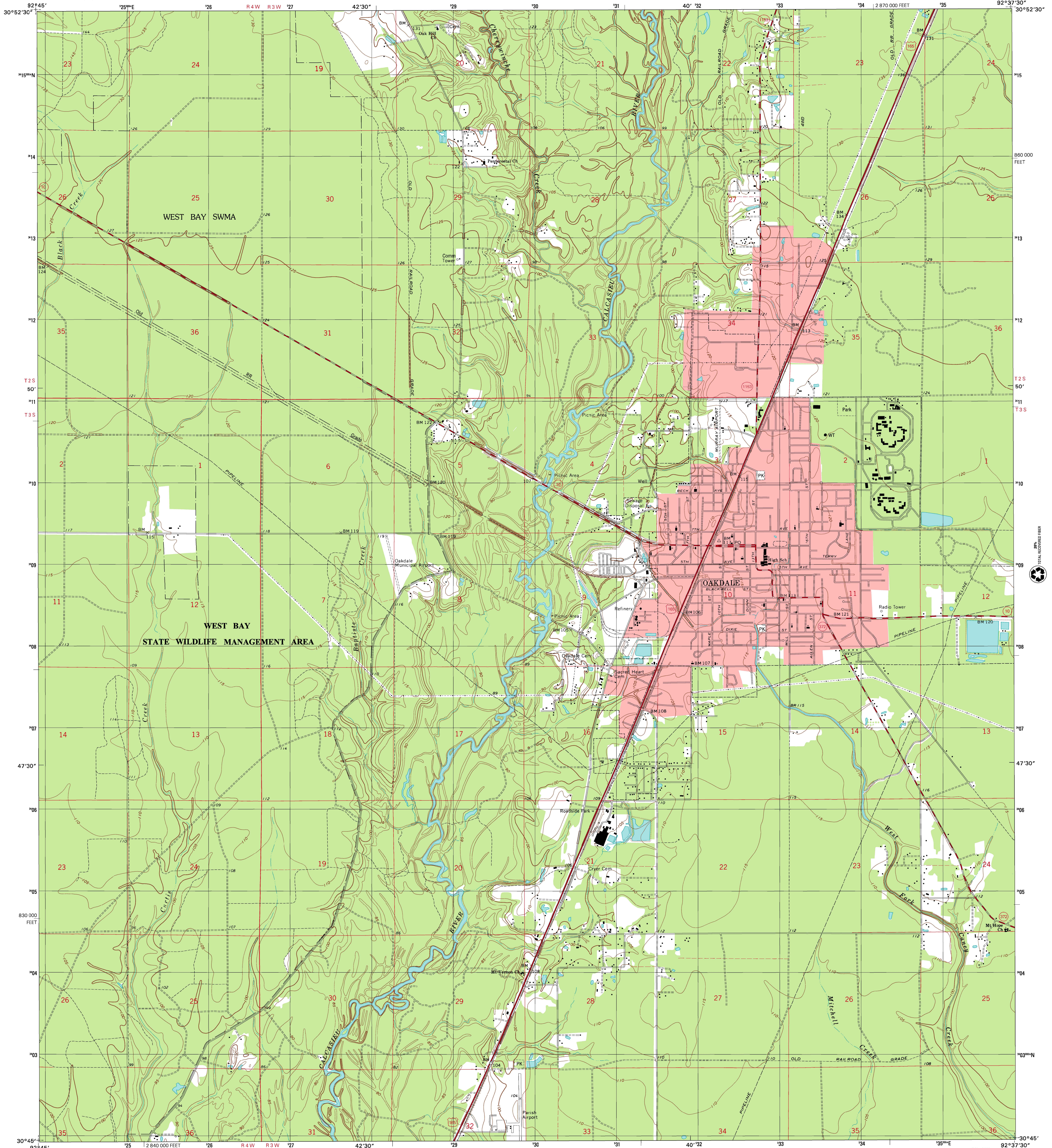


U.S. DEPARTMENT OF THE INTERIOR
U.S. GEOLOGICAL SURVEY

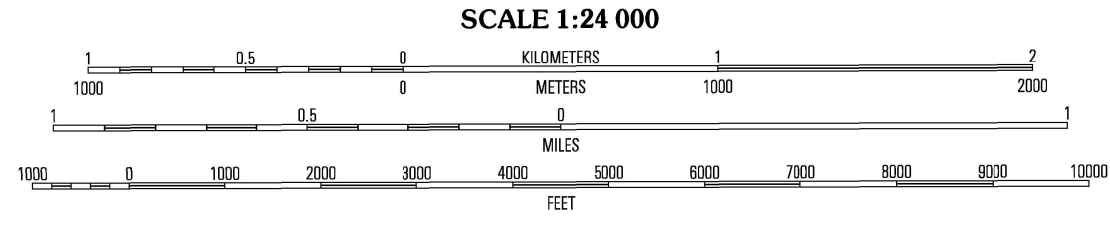
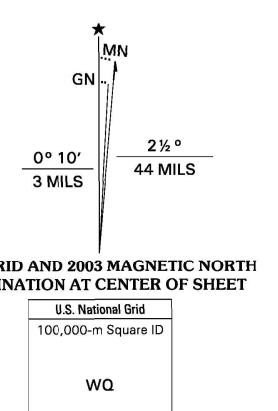


STATE OF LOUISIANA
DEPARTMENT OF TRANSPORTATION AND DEVELOPMENT

OAKDALE QUADRANGLE
LOUISIANA-ALLEN PARISH
7.5-MINUTE SERIES (TOPOGRAPHIC)



Produced by the United States Geological Survey
Topography compiled 1968. Planimetry derived from imagery taken 1956 and other sources. Public Land Survey System and survey control current as of 1966. Boundaries current as of 2002.
North American Datum of 1983 (NAD 83). Projection and 1000-meter grid: Universal Transverse Mercator, zone 15R 10 000-foot ticks: Louisiana Coordinate System of 1985 (south zone).
North American Datum of 1927 (NAD 27) is shown by dashed corner ticks. The values of the shift between NAD 83 and NAD 27 for 7.5-minute intersections are obtainable from National Geodetic Survey NADCON software.
There may be private inholdings within the boundaries of the National or State reservations shown on this map.
Houses of worship, schools, and other labeled buildings verified 1966.

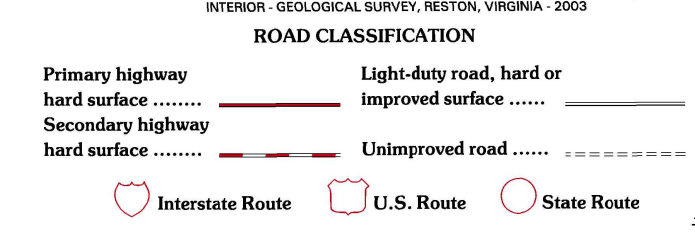


CONTOUR INTERVAL 5 FEET
NATIONAL GEODETIC VERTICAL DATUM OF 1929
TO CONVERT FROM FEET TO METERS, MULTIPLY BY 0.3048

THIS MAP COMPLIES WITH NATIONAL MAP ACCURACY STANDARDS
FOR SALE BY U.S. GEOLOGICAL SURVEY, P.O. BOX 29286, DENVER, COLORADO 80225
AND LOUISIANA DEPARTMENT OF TRANSPORTATION AND DEVELOPMENT, BATON ROUGE, LOUISIANA 70804
A FOLDER DESCRIBING TOPOGRAPHIC MAPS AND SYMBOLS IS AVAILABLE ON REQUEST



QUADRANGLE LOCATION



1	2	3	1 Steep Gully
4	5	4	2 Puddle
6	7	5	3 Glenmore
		6	4 Elizabeth
		7	5 Beaver
		8	6 Pine Chapel
			7 Day
			8 Bond

ADJOINING 7.5 QUADRANGLES
LA 134C

OAKDALE, LA
1998

NIMA 7445 | SW-SERIES V885



ISBN 0-607-99976-4