

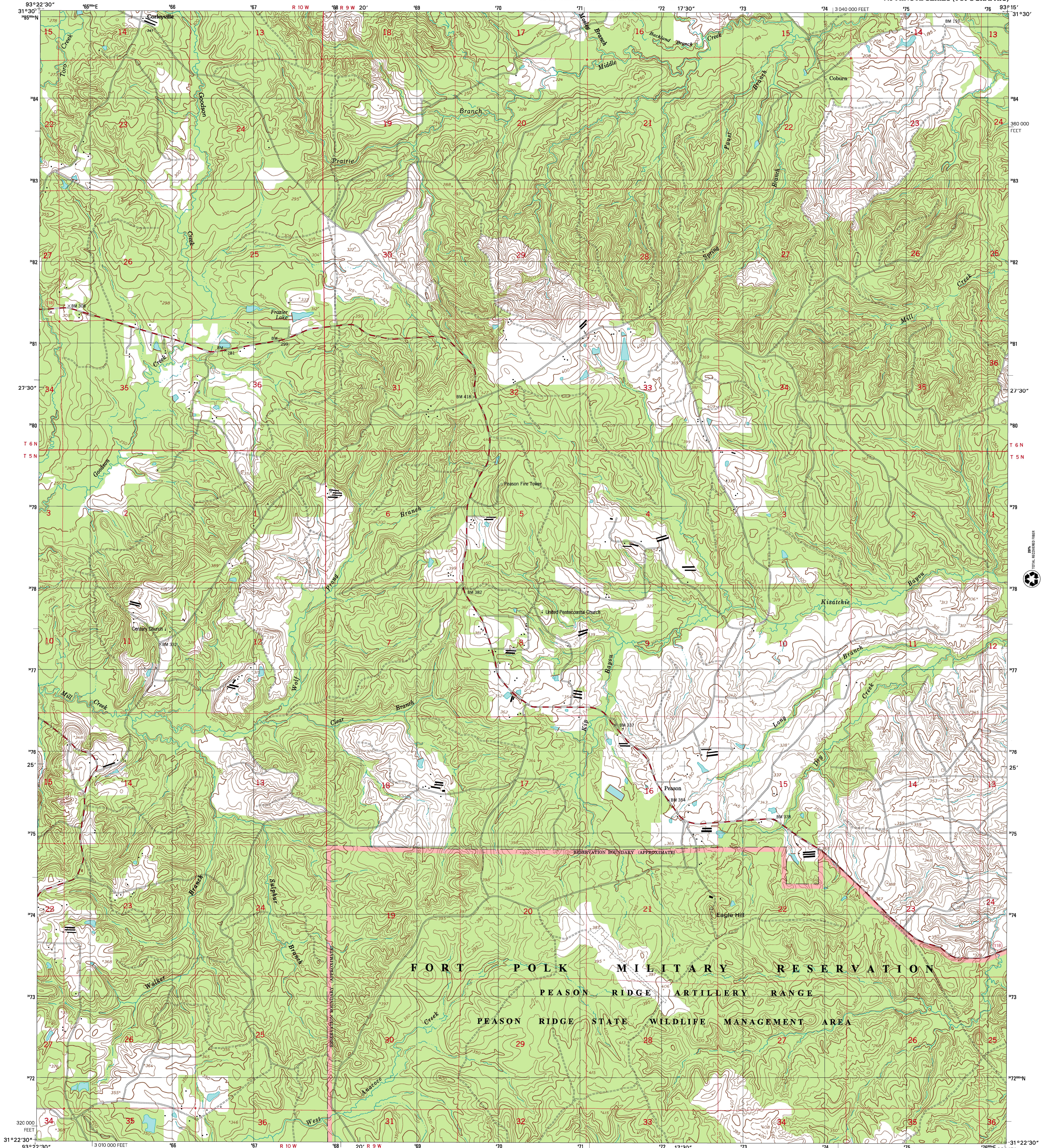


U.S. DEPARTMENT OF THE INTERIOR
U.S. GEOLOGICAL SURVEY



STATE OF LOUISIANA
DEPARTMENT OF TRANSPORTATION AND DEVELOPMENT

PEASON QUADRANGLE
LOUISIANA-SABINE PARISH
7.5-MINUTE SERIES (TOPOGRAPHIC)



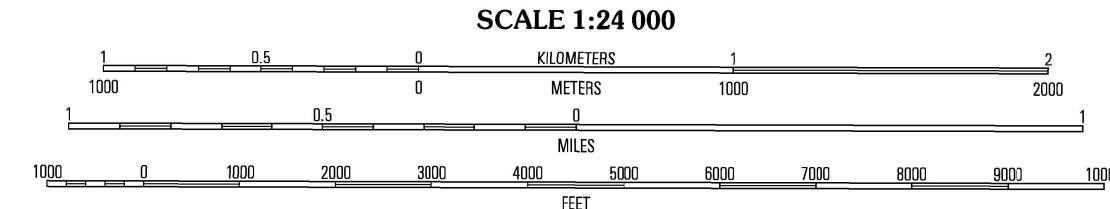
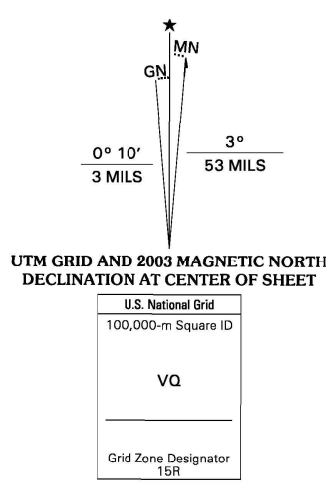
Produced by the United States Geological Survey in cooperation with Louisiana Department of Transportation and Development

Topography compiled 1954. Planimetry derived from imagery taken 1998 and other sources. Public Land Survey System and survey control current as of 1954. Boundaries current as of 2002

North American Datum of 1983 (NAD 83). Projection and 1 000-meter grid: Universal Transverse Mercator, zone 15R 1 000-foot ticks: Louisiana Coordinate System of 1983 (north zone)

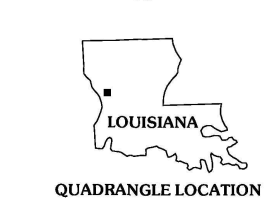
North American Datum of 1927 (NAD 27) is shown by dashed corner ticks. The values of the shift between NAD 83 and NAD 27 for 7.5-minute intersections are obtainable from National Geodetic Survey NADCON software

There may be private inholdings within the boundaries of the National or State reservations shown on this map. Houses of worship, schools, and other labeled buildings verified 1954



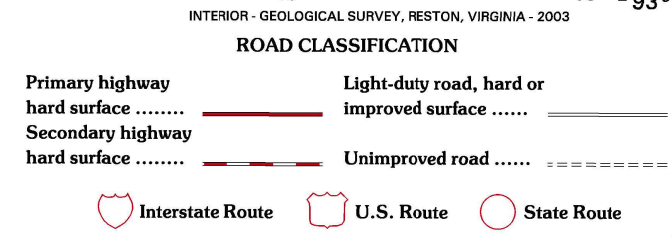
CONTOUR INTERVAL 10 FEET
SUPPLEMENTARY CONTOUR INTERVAL 5 FEET
NATIONAL GEODETIC VERTICAL DATUM OF 1929
TO CONVERT FROM FEET TO METERS, MULTIPLY BY 0.3048

THIS MAP COMPLIES WITH NATIONAL MAP ACCURACY STANDARDS
FOR SALE BY U.S. GEOLOGICAL SURVEY, P.O. BOX 25286, DENVER, COLORADO 80225
AND LOUISIANA DEPARTMENT OF TRANSPORTATION AND DEVELOPMENT, BATON ROUGE, LOUISIANA 70804
A FOLDER DESCRIBING TOPOGRAPHIC MAPS AND SYMBOLS IS AVAILABLE ON REQUEST



1	2	3	1 Many
			2 Vowells Mill
			3 Bellwood
			4 Flaming
			5 Kitchie
			6 Hornbeck
			7 Shawnee Creek
			8 Kurthwood

ADJOINING 7.5' QUADRANGLES
LA 102B



PEASON, LA
1998

NIMA 7346 IV NE-SERIES V885

