



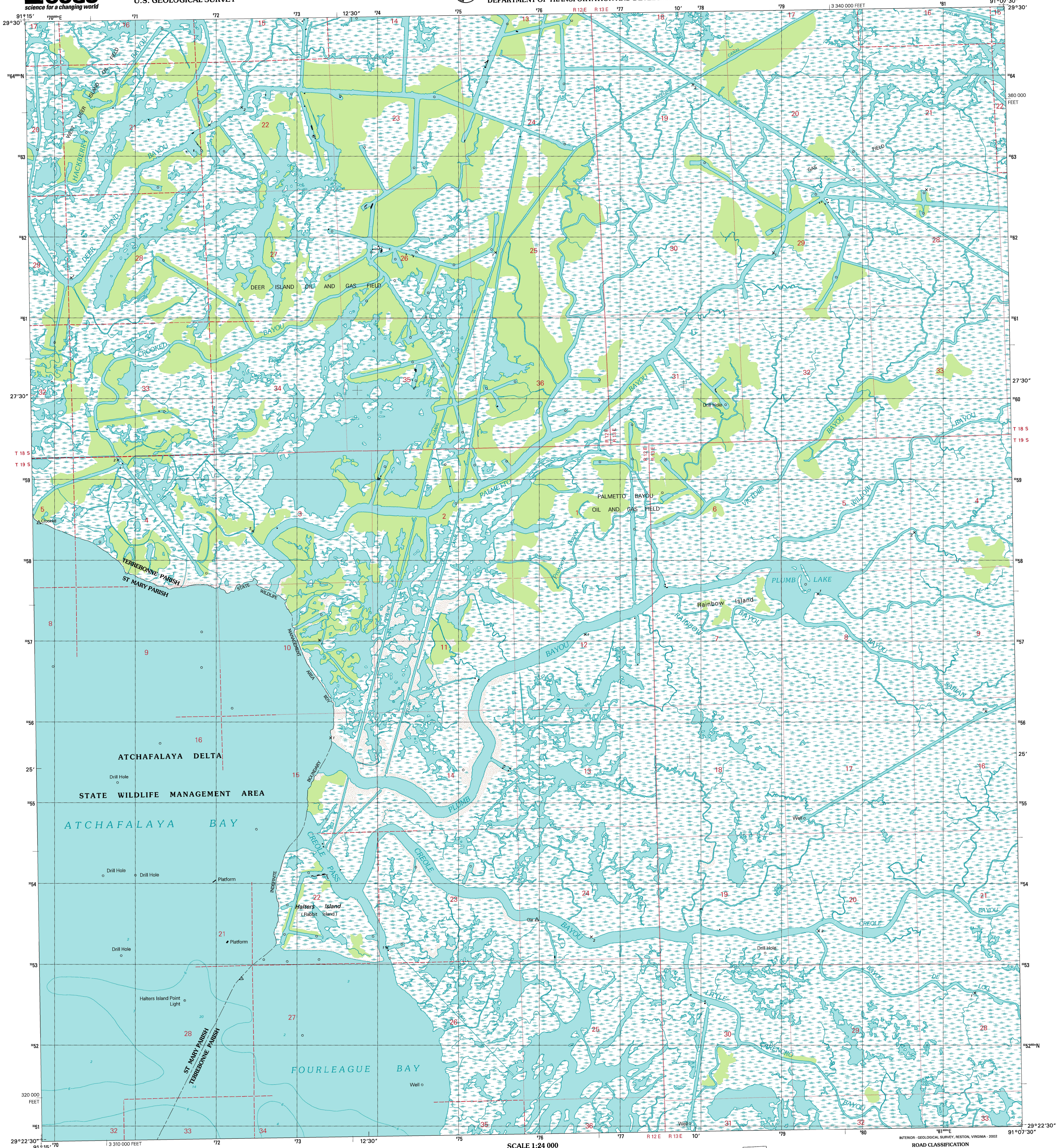
U.S. DEPARTMENT OF THE INTERIOR
U.S. GEOLOGICAL SURVEY



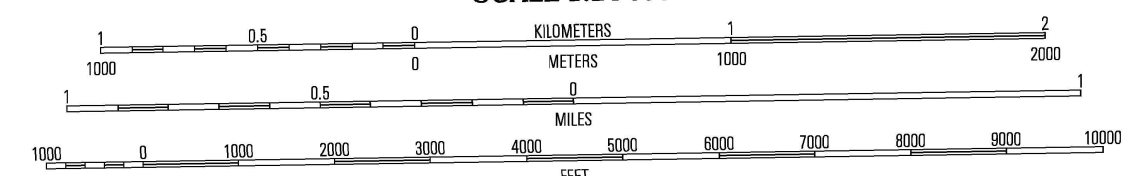
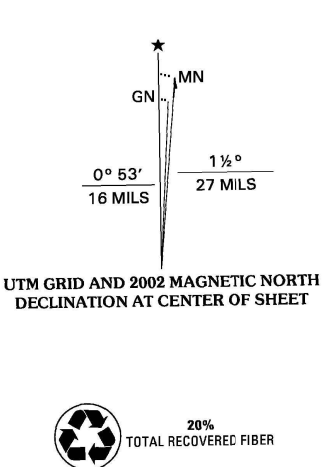
STATE OF LOUISIANA
DEPARTMENT OF TRANSPORTATION AND DEVELOPMENT

PLUMB BAYOU QUADRANGLE
LOUISIANA
7.5-MINUTE SERIES (TOPOGRAPHIC)

JOAN JOHNSON PLUMB BAYOU QUADRANGLE



Produced by the United States Geological Survey in cooperation with Louisiana Department of Transportation and Development. Topography compiled 1974. Planimetry derived from imagery taken 1988 and other sources. Public Land Survey System and survey control current as of 1974. Boundaries current as of 2002. North American Datum of 1983 (NAD 83). Projection and 1000-meter grid: Universal Transverse Mercator, zone 18. 10 000-foot ticks: Louisiana Coordinate System of 1983 (south zone). North American Datum of 1927 (NAD 27) is shown by dashed corner ticks. The values of the shift between NAD 83 and NAD 27 for 7.5-minute intersections are obtainable from National Geodetic Survey NADCON software. There may be private inholdings within the boundaries of the National or State reservations shown on this map. This quadrangle covers a subsidence area. Dotted land lines established by private survey. Houses of worship, schools, and other labeled buildings verified 1974.



ALL ELEVATIONS BETWEEN ZERO AND 5 FEET ABOVE DATUM NATIONAL GEODETIC VERTICAL DATUM OF 1929 TO CONVERT FROM FEET TO METERS, MULTIPLY BY 0.3048 DEPTH CURVES AND SOUNDINGS IN FEET - DATUM IS MEAN LOWER LOW WATER THE RELATIONSHIP BETWEEN THE TWO DATUMS IS VARIABLE THIS MAP COMPLIES WITH NATIONAL MAP ACCURACY STANDARDS FOR SALE BY U.S. GEOLOGICAL SURVEY, P.O. BOX 25286, DENVER, COLORADO 80225 AND LOUISIANA DEPARTMENT OF TRANSPORTATION AND DEVELOPMENT, BATON ROUGE, LOUISIANA 70804 A FOLDER DESCRIBING TOPOGRAPHIC MAPS AND SYMBOLS IS AVAILABLE ON REQUEST



QUADRANGLE LOCATION

1	2	3
4	5	6
7	8	

ADJOINING 7.5' QUADRANGLES LA 247A

ROAD CLASSIFICATION

- Primary highway: solid line with double red dashes
- Secondary highway: solid line with single red dashes
- Light-duty road, hard or improved surface: solid line with blue dashes
- Unimproved road: solid line with black dashes
- Interstate Route: red shield with white border
- U.S. Route: red shield with white border
- State Route: white shield with black border

1 Lake Salve
2 Morgan City SW
3 Morgan City SE
4 Point Au Fer NE
5 Carriere Bayou
6 Point Au Fer
7 Fourleague Bay
8 Lost Lake

PLUMB BAYOU, LA
1998
NIMA 7742 | NW-SERIES V885

