

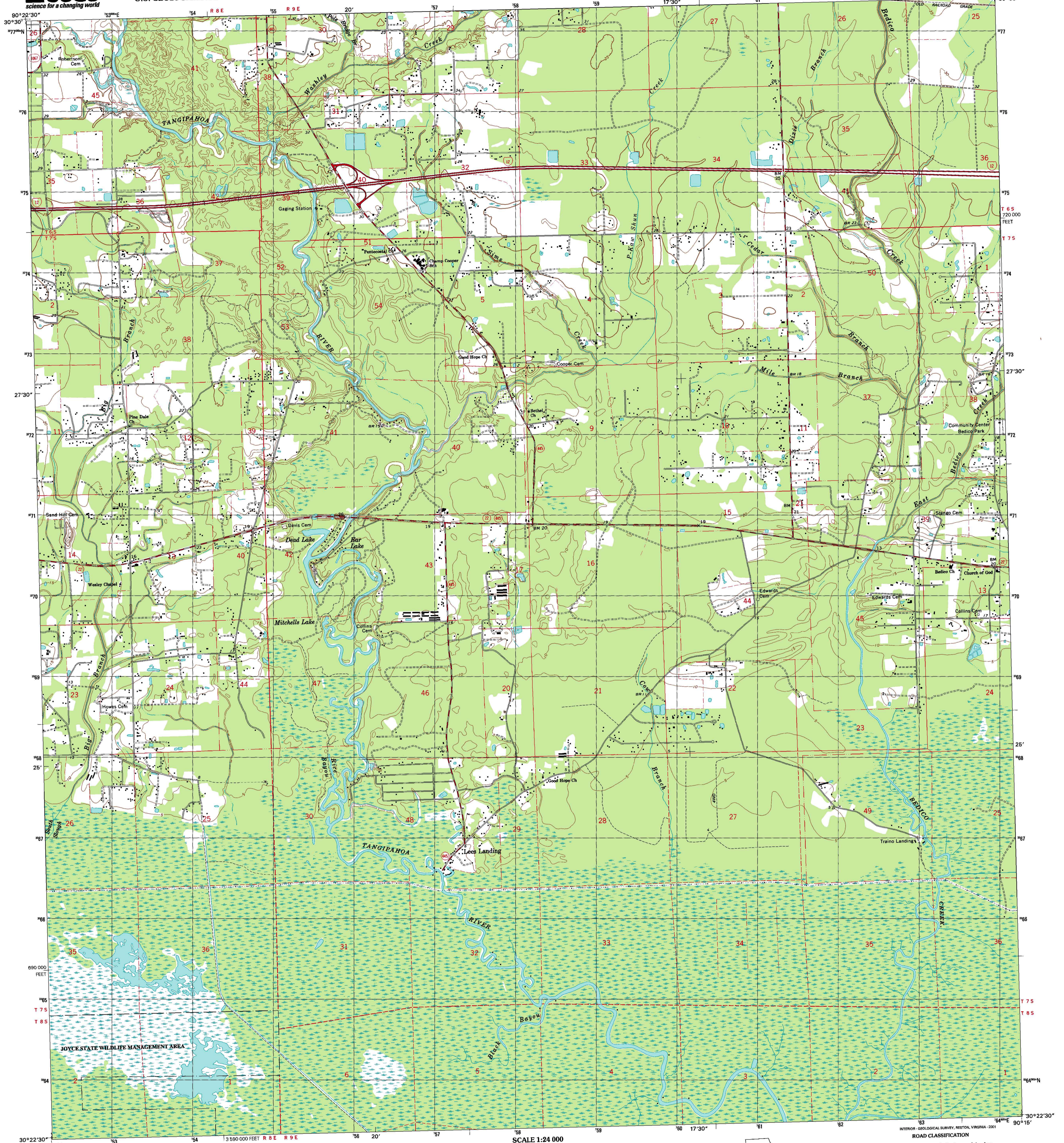


U.S. DEPARTMENT OF THE INTERIOR
U.S. GEOLOGICAL SURVEY

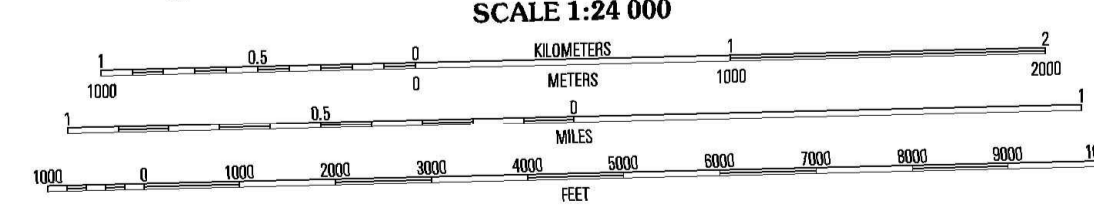
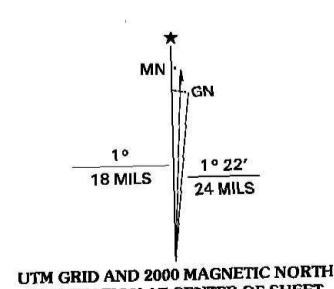


STATE OF LOUISIANA
DEPARTMENT OF TRANSPORTATION AND DEVELOPMENT

PONCHATOULA NE QUADRANGLE
LOUISIANA-TANGIPAHOA PARISH
7.5-MINUTE SERIES (TOPOGRAPHIC)



Produced by the United States Geological Survey in cooperation with Louisiana Department of Transportation and Development.
Topography compiled 1965. Planimetry derived from imagery taken 1968 and other sources. Public Land Survey System and survey control current as of 1968.
North American Datum of 1983 (NAD 83). Projection and 10 000-foot ticks: Universal Transverse Mercator, zone 15
2 000-meter grid: Louisiana Coordinate System of 1983 (south zone)
North American Datum of 1927 (NAD 27) is shown by dashed corner ticks. The values of the shift between NAD 83 and NAD 27 for 7.5-minute intersections are obtainable from National Geodetic Survey NADCON software.
There may be private inholdings within the boundaries of the National or State reservations shown on this map.
Landmark buildings verified 1968.



CONTOUR INTERVALS FEET
NATIONAL GEODETIC VERTICAL DATUM OF 1929
TO CONVERT FROM FEET TO METERS, MULTIPLY BY 0.3048

THIS MAP COMPLIES WITH NATIONAL MAP ACCURACY STANDARDS
FOR SALE BY U.S. GEOLOGICAL SURVEY, P. O. BOX 25286, DENVER, COLORADO 80225
AND LOUISIANA DEPARTMENT OF TRANSPORTATION AND DEVELOPMENT, BATON ROUGE, LOUISIANA 70804
A FOLDER DESCRIBING TOPOGRAPHIC MAPS AND SYMBOLS IS AVAILABLE ON REQUEST



QUADRANGLE LOCATION

ROAD CLASSIFICATION
Primary highway hard surface
Secondary highway hard surface
Light-duty road, hard or improved surface
Unimproved road
Interstate Route
U.S. Route
State Route

1	2	3	1 Hammond
4	5	6	2 Robert
7	8	7	3 Martindale
		8	4 Ponchatoula
			5 Manchacville
			6 Manchac
			7 Ponchatoula SW
			8 Covington SW

ADJOINING 7.5 QUADRANGLE NAMES
LA 1602

PONCHATOULA NE, LA
1998
NIMA 7944 IV NE-SERIES V885



ISBN 0-607-94477-8
9 780607 944778