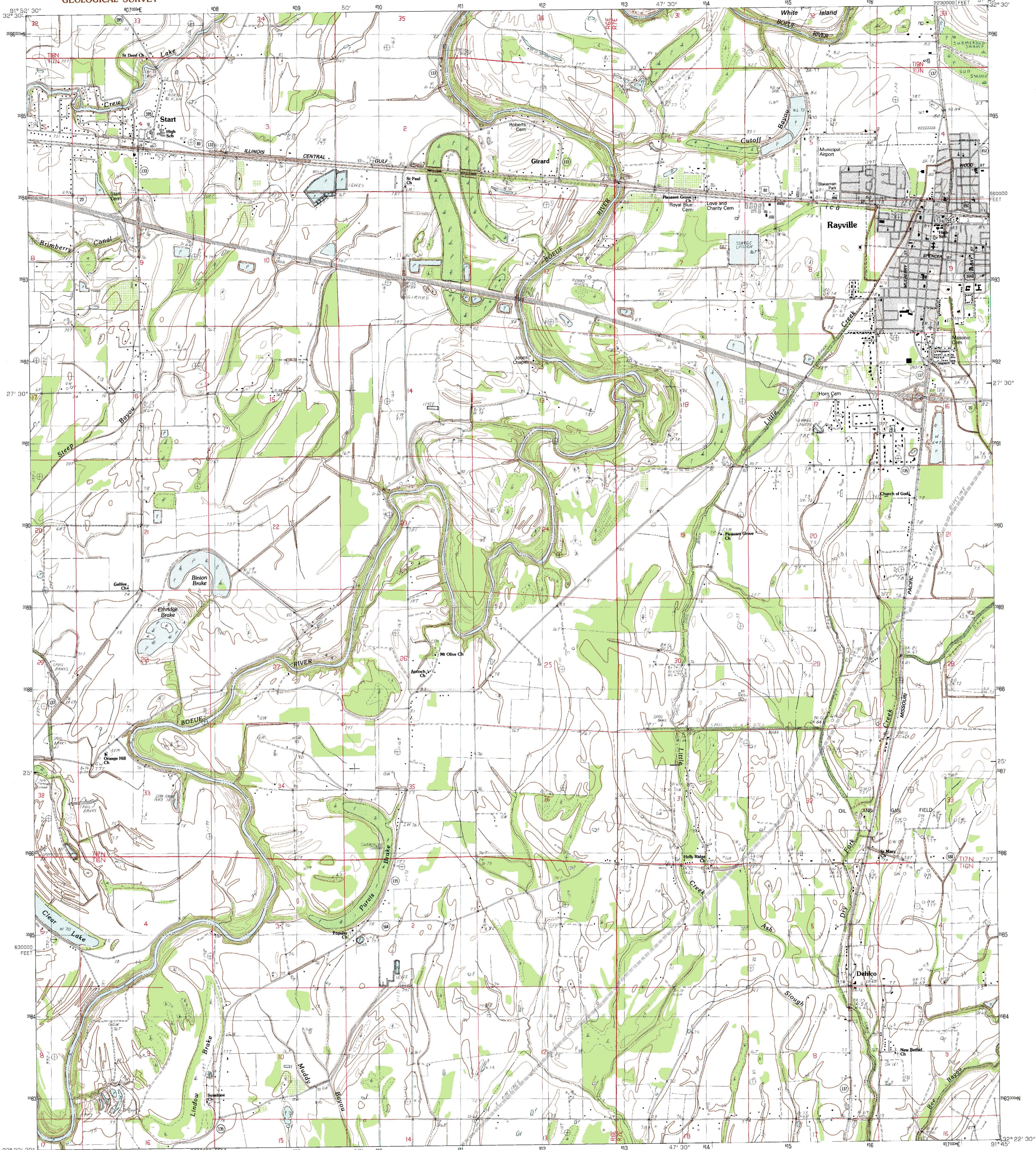


UNITED STATES  
DEPARTMENT OF THE INTERIOR  
GEOLOGICAL SURVEY

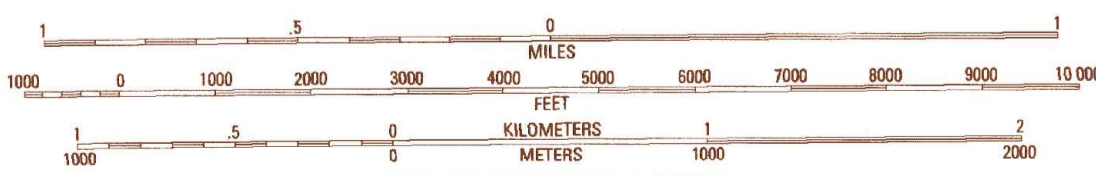
RAYVILLE QUADRANGLE  
LOUISIANA-RICHLAND PARISH  
7.5 MINUTE SERIES (TOPOGRAPHIC)



PRODUCED BY THE UNITED STATES GEOLOGICAL SURVEY CONTROL BY USGS AND NOS/NOAA COMPILED FROM AERIAL PHOTOGRAPHS TAKEN 1976 FIELD CHECKED 1979. MAP EDITED 1982 PROJECTION LAMBERT CONFORMAL CONIC GRID: 1000-METER UNIVERSAL TRANSVERSE MERCATOR ZONE 15 1000-FOOT STATE GRID TICKS LOUISIANA NORTH ZONE UTM GRID DECLINATION 038° EAST 1982 MAGNETIC NORTH DECLINATION 430° EAST VERTICAL DATUM NATIONAL GEODETIC VERTICAL DATUM OF 1929 HORIZONTAL DATUM 1927 NORTH AMERICAN DATUM To place on the predicted North American Datum of 1983 move the projection lines as shown by dashed corner ticks (13 meters south and 12 meters east) There may be private inholdings within the boundaries of any Federal and State reservations shown on this map Gray tint indicates area in which selected buildings are shown

**PROVISIONAL MAP**  
Produced from original manuscript drawings. Information shown as of date of field check.

SCALE 1:24 000



To convert feet to meters multiply by .3048  
To convert meters to feet multiply by 3.2808

THIS MAP COMPLIES WITH NATIONAL MAP ACCURACY STANDARDS FOR SALE BY U.S. GEOLOGICAL SURVEY, DENVER, COLORADO 80225, OR RESTON, VIRGINIA 22092 AND THE STATE OF LOUISIANA, DEPARTMENT OF PUBLIC WORKS, BATON ROUGE, LOUISIANA 70804



ROAD LEGEND

- Improved Road
- Unimproved Road
- Trail
- Interstate Route
- U.S. Route
- State Route

|   |   |   |                        |
|---|---|---|------------------------|
| 1 | 2 | 3 | 1 Swartz               |
| 2 | 4 | 5 | 2 Irwin Lake           |
| 3 | 6 | 7 | 3 Whitney Island South |
| 4 | 8 | 8 | 4 Crew Lake            |
| 5 |   |   | 5 Bee Bayou            |
| 6 |   |   | 6 Gilleyville          |
| 7 |   |   | 7 Mangham              |
| 8 |   |   | 8 Baskinton            |

ADJOINING 7.5' QUADRANGLE NAMES

RAYVILLE, LOUISIANA  
PROVISIONAL EDITION 1982

32091-D7-TF-024