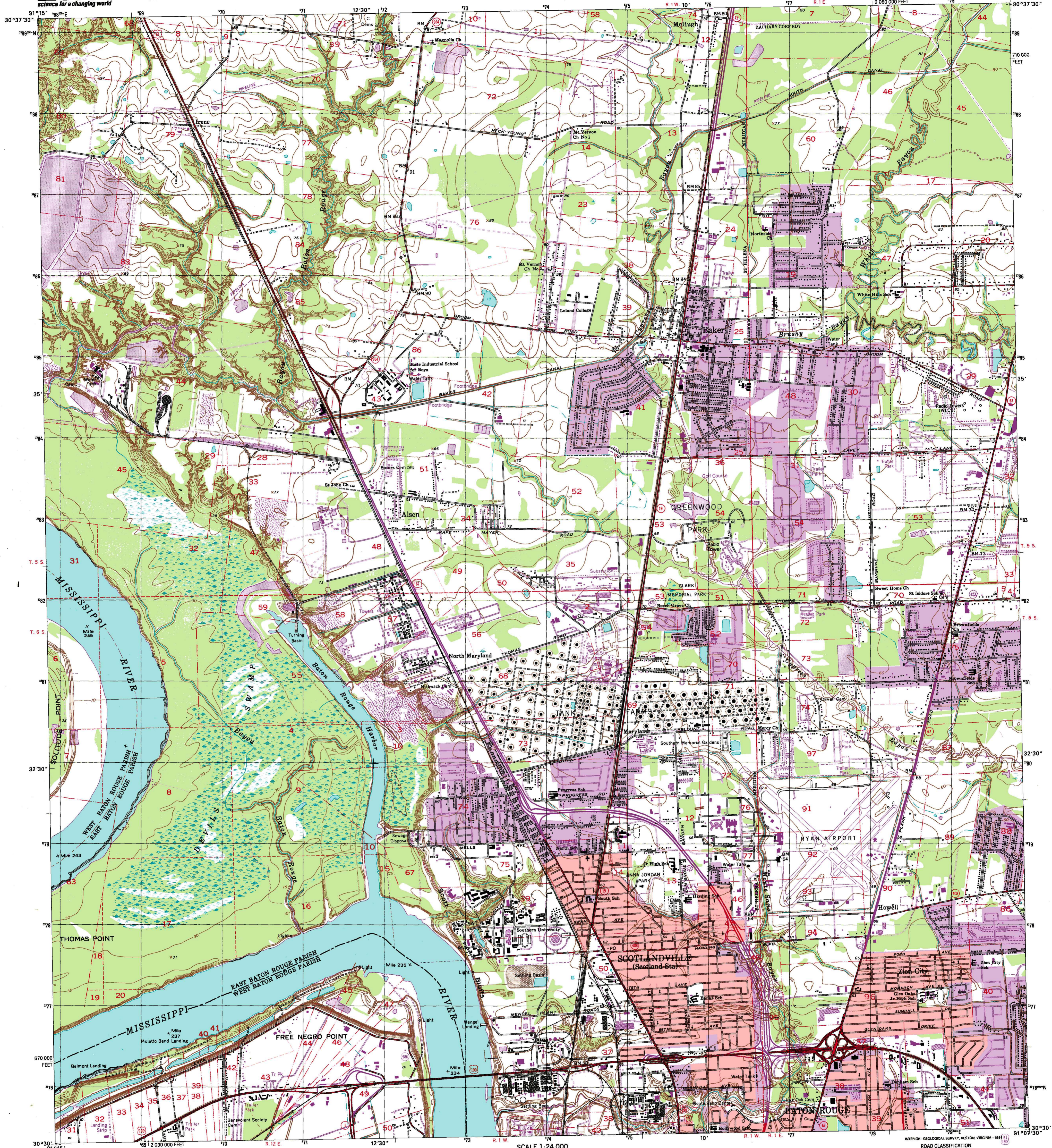


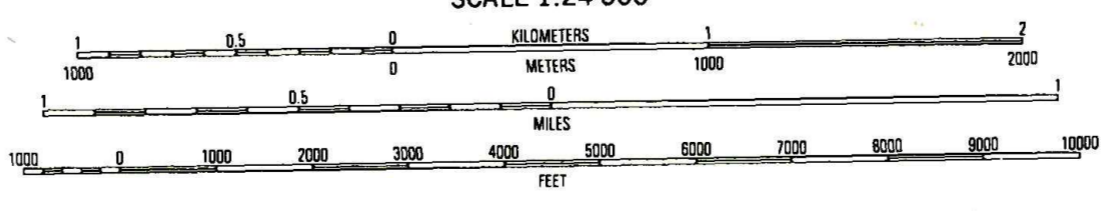
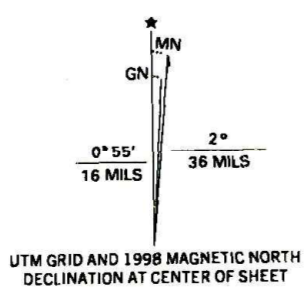


U.S. DEPARTMENT OF THE INTERIOR
U.S. GEOLOGICAL SURVEY

SCOTLANDVILLE QUADRANGLE
LOUISIANA
7.5-MINUTE SERIES (TOPOGRAPHIC)



Produced by the United States Geological Survey
Topography compiled 1953. Planimetry derived from imagery taken 1989 and other sources. Photorevised using imagery dated 1995; no major culture or drainage changes observed. PLSS and survey control current as of 1963. Boundaries, other than corporate, verified 1998
North American Datum of 1927 (NAD 27). Projection and 10 000-foot ticks: Louisiana coordinate system, south zone (Lambert conformal conic)
1000-meter Universal Transverse Mercator grid, zone 15
North American Datum of 1983 (NAD 83) is shown by dashed corner ticks. The values of the shift between NAD 27 and NAD 83 for 7.5-minute intersections are obtainable from National Geodetic Survey NADCON software
Information shown in purple may not meet USGS content standards and may conflict with previously mapped contours



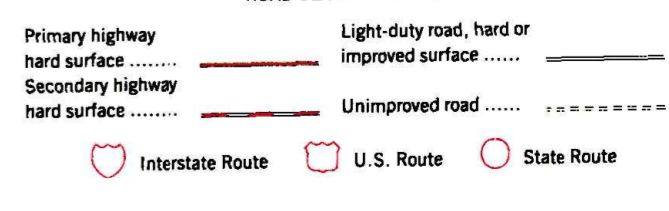
CONTOUR INTERVAL 5 FEET
NATIONAL GEODETIC VERTICAL DATUM OF 1929
TO CONVERT FROM FEET TO METERS, MULTIPLY BY 0.3048

THIS MAP COMPLIES WITH NATIONAL MAP ACCURACY STANDARDS
FOR SALE BY U.S. GEOLOGICAL SURVEY, P.O. BOX 25286, DENVER, COLORADO 80225
AND LOUISIANA DEPARTMENT OF TRANSPORTATION AND DEVELOPMENT, BATON ROUGE, LOUISIANA 70804
A FOLDER DESCRIBING TOPOGRAPHIC MAPS AND SYMBOLS IS AVAILABLE ON REQUEST



1	2	3
4	5	6
7	8	

ADJOINING 7.5' QUADRANGLE NAMES



SCOTLANDVILLE, LA
1995

NIMA 7745 II SW-SERIES V885

