

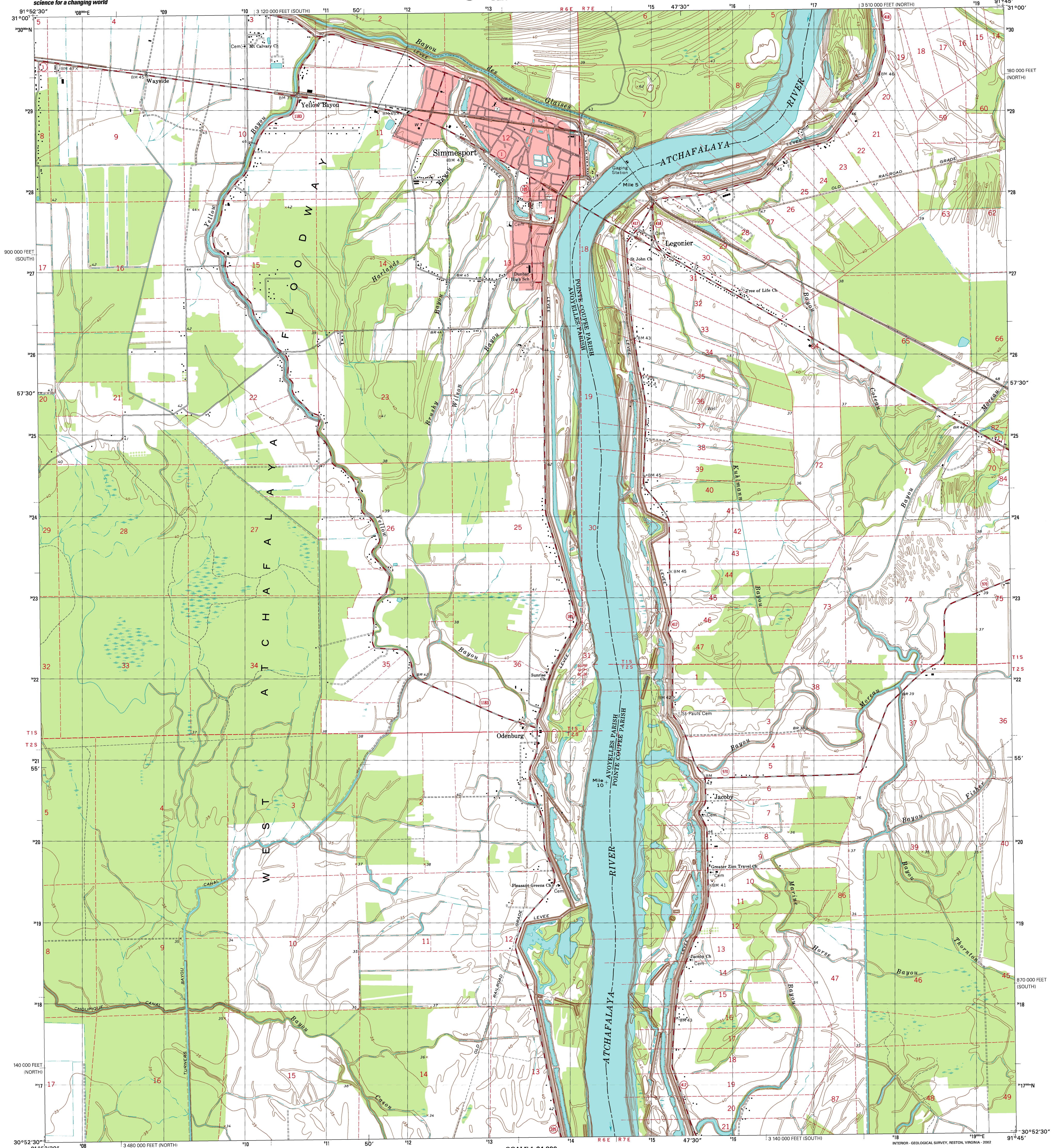


U.S. DEPARTMENT OF THE INTERIOR
U.S. GEOLOGICAL SURVEY



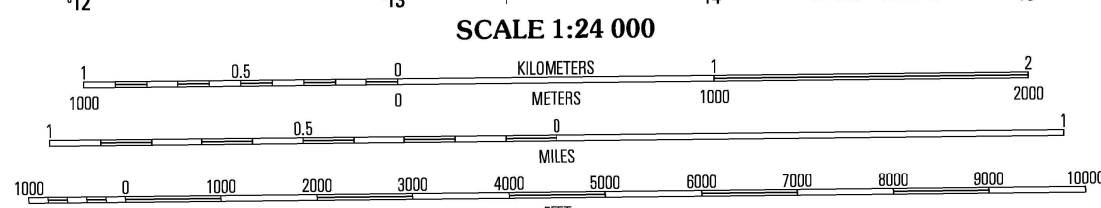
STATE OF LOUISIANA
DEPARTMENT OF TRANSPORTATION AND DEVELOPMENT

SIMMESPORT QUADRANGLE
LOUISIANA
7.5-MINUTE SERIES (TOPOGRAPHIC)



Produced by the United States Geological Survey
in cooperation with Louisiana Department of
Transportation and Development
Topography compiled 1969. Planimetry derived from imagery
taken 1958 and other sources. Public Land Survey System and
survey control current as of 1969. Boundaries current as of 2002
North American Datum of 1983 (NAD 83). Projection and
1 000-meter grid: Universal Transverse Mercator, zone 15
10 000-foot ticks: Louisiana Coordinate System of 1983
(north and south zones)
North American Datum of 1927 (NAD 27) is shown by dashed
contour ticks. The values of the shift between NAD 83 and
NAD 27 for 7.5-minute intersections are obtainable from
National Geodetic Survey NADCON software
Houses of worship, schools, and other labeled buildings verified 1969

UTM GRID AND MAGNETIC NORTH
DECLINATION AT CENTER OF SHEET



CONTOUR INTERVAL 5 FEET
NATIONAL GEODETIC VERTICAL DATUM OF 1929
TO CONVERT FROM FEET TO METERS, MULTIPLY BY 0.3048

THIS MAP COMPLIES WITH NATIONAL MAP ACCURACY STANDARDS
FOR SALE BY U.S. GEOLOGICAL SURVEY, P.O. BOX 25286, DENVER, COLORADO 80225
AND LOUISIANA DEPARTMENT OF TRANSPORTATION AND DEVELOPMENT, BATON ROUGE, LOUISIANA 70804
A FOLDER DESCRIBING TOPOGRAPHIC MAPS AND SYMBOLS IS AVAILABLE ON REQUEST



QUADRANGLE LOCATION

ROAD CLASSIFICATION
Primary highway
hard surface
Secondary highway
hard surface
Light-duty road, hard or
improved surface
Unimproved road
Interstate Route U.S. Route State Route

1	2	3	1 Moreauville
4	5	6	2 Big Bend
7	8	9	3 Turnhill Island
10	11	12	4 Plaquemine
13	14	15	5 Bayou Jack
16	17	18	6 Bayou Courant
19	20	21	7 Bayou de l'Enfer
22	23	24	8 Bayou de l'Est
25	26	27	9 Bayou de l'Ouest
28	29	30	10 Bayou de l'Inde
31	32	33	11 Bayou de l'Or
34	35	36	12 Bayou de l'Argent
37	38	39	13 Bayou de l'Azul
40	41	42	14 Bayou de l'Alger
43	44	45	15 Bayou de l'Alger
46	47	48	16 Bayou de l'Alger
49	50	51	17 Bayou de l'Alger
52	53	54	18 Bayou de l'Alger
55	56	57	19 Bayou de l'Alger
58	59	60	20 Bayou de l'Alger
61	62	63	21 Bayou de l'Alger
64	65	66	22 Bayou de l'Alger
67	68	69	23 Bayou de l'Alger
70	71	72	24 Bayou de l'Alger
73	74	75	25 Bayou de l'Alger
76	77	78	26 Bayou de l'Alger
79	80	81	27 Bayou de l'Alger
82	83	84	28 Bayou de l'Alger
85	86	87	29 Bayou de l'Alger
88	89	90	30 Bayou de l'Alger
91	92	93	31 Bayou de l'Alger
94	95	96	32 Bayou de l'Alger
97	98	99	33 Bayou de l'Alger
100	101	102	34 Bayou de l'Alger
103	104	105	35 Bayou de l'Alger
106	107	108	36 Bayou de l'Alger
109	110	111	37 Bayou de l'Alger
112	113	114	38 Bayou de l'Alger
115	116	117	39 Bayou de l'Alger
118	119	120	40 Bayou de l'Alger
121	122	123	41 Bayou de l'Alger
124	125	126	42 Bayou de l'Alger
127	128	129	43 Bayou de l'Alger
130	131	132	44 Bayou de l'Alger
133	134	135	45 Bayou de l'Alger
136	137	138	46 Bayou de l'Alger
139	140	141	47 Bayou de l'Alger
142	143	144	48 Bayou de l'Alger
145	146	147	49 Bayou de l'Alger
148	149	150	50 Bayou de l'Alger

SIMMESPORT, LA

1998

NMA 7645 IV NE-SERIES V885



ISBN 0-607-7677-5