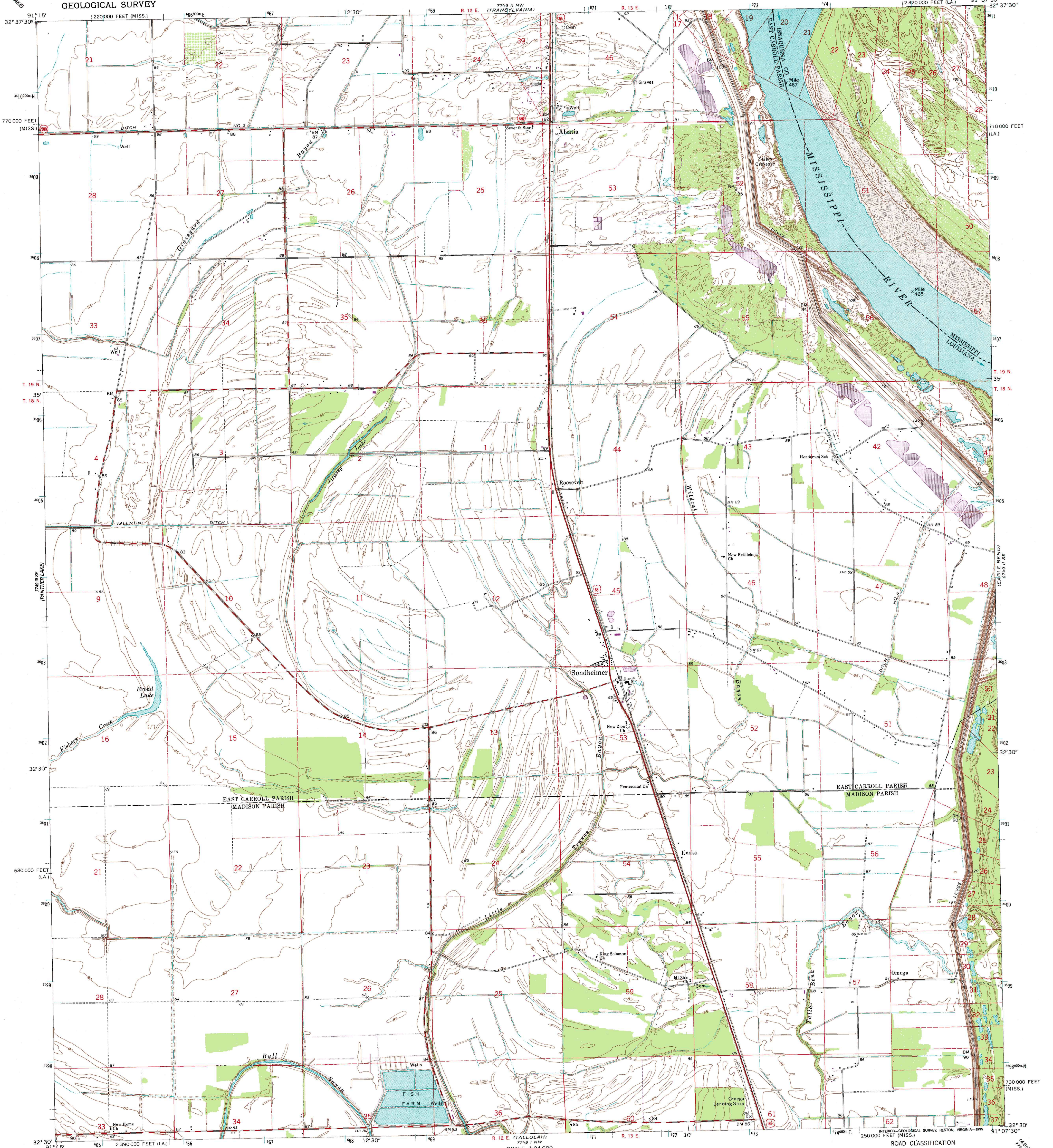
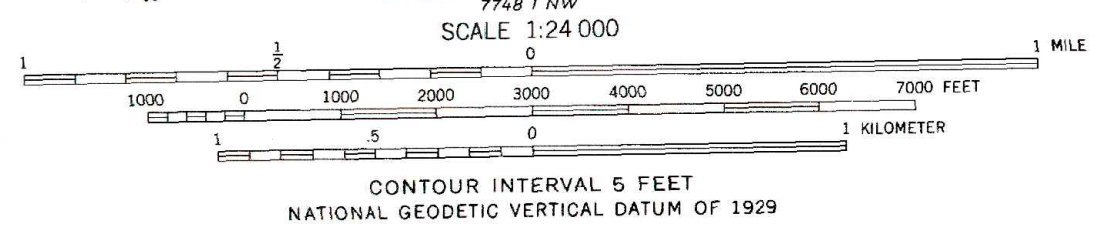
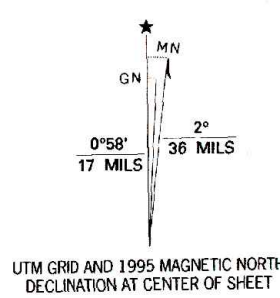


UNITED STATES
DEPARTMENT OF THE INTERIOR
GEOLOGICAL SURVEY

SONDHEIMER QUADRANGLE
LOUISIANA—MISSISSIPPI
7.5 MINUTE SERIES (TOPOGRAPHIC)



Produced by the United States Geological Survey
Compiled by photogrammetric methods from imagery dated 1967
Field checked 1970
North American Datum of 1927 (NAD 27)
Projection: Louisiana coordinate system, north zone
(Lambert conformal conic)
10 000-foot ticks: Louisiana coordinate system, north zone and
Mississippi coordinate system, west zone
Blue 1000-meter Universal Transverse Mercator ticks, zone 15
North American Datum of 1983 (NAD 83) is shown by dashed
corner ticks. The values of the shift between NAD 27 and NAD 83
for 7.5-minute intersections are obtainable from National Geodetic
Survey NADCON software



THIS MAP COMPLIES WITH NATIONAL MAP ACCURACY STANDARDS
FOR SALE BY U.S. GEOLOGICAL SURVEY, DENVER, COLORADO 80225, OR RESTON, VIRGINIA 22092
AND LOUISIANA DEPARTMENT OF TRANSPORTATION AND DEVELOPMENT, BATON ROUGE, LOUISIANA 70804
A FOLDER DESCRIBING TOPOGRAPHIC MAPS AND SYMBOLS IS AVAILABLE ON REQUEST

Revisions shown in purple compiled in cooperation with
State of Louisiana agencies from imagery dated 1994
and other sources. Map edited 1995
Information shown in purple may not meet USGS content
standards and may conflict with previously mapped contours

ROAD CLASSIFICATION
Primary highway, hard surface
Secondary highway, hard surface
Light-duty road, hard or improved surface
Unimproved road
Interstate Route
U.S. Route
State Route

SONDHEIMER, LA-MS
32091-E2-TF-024
1994
DMA 7749 II SW-SERIES V885

