

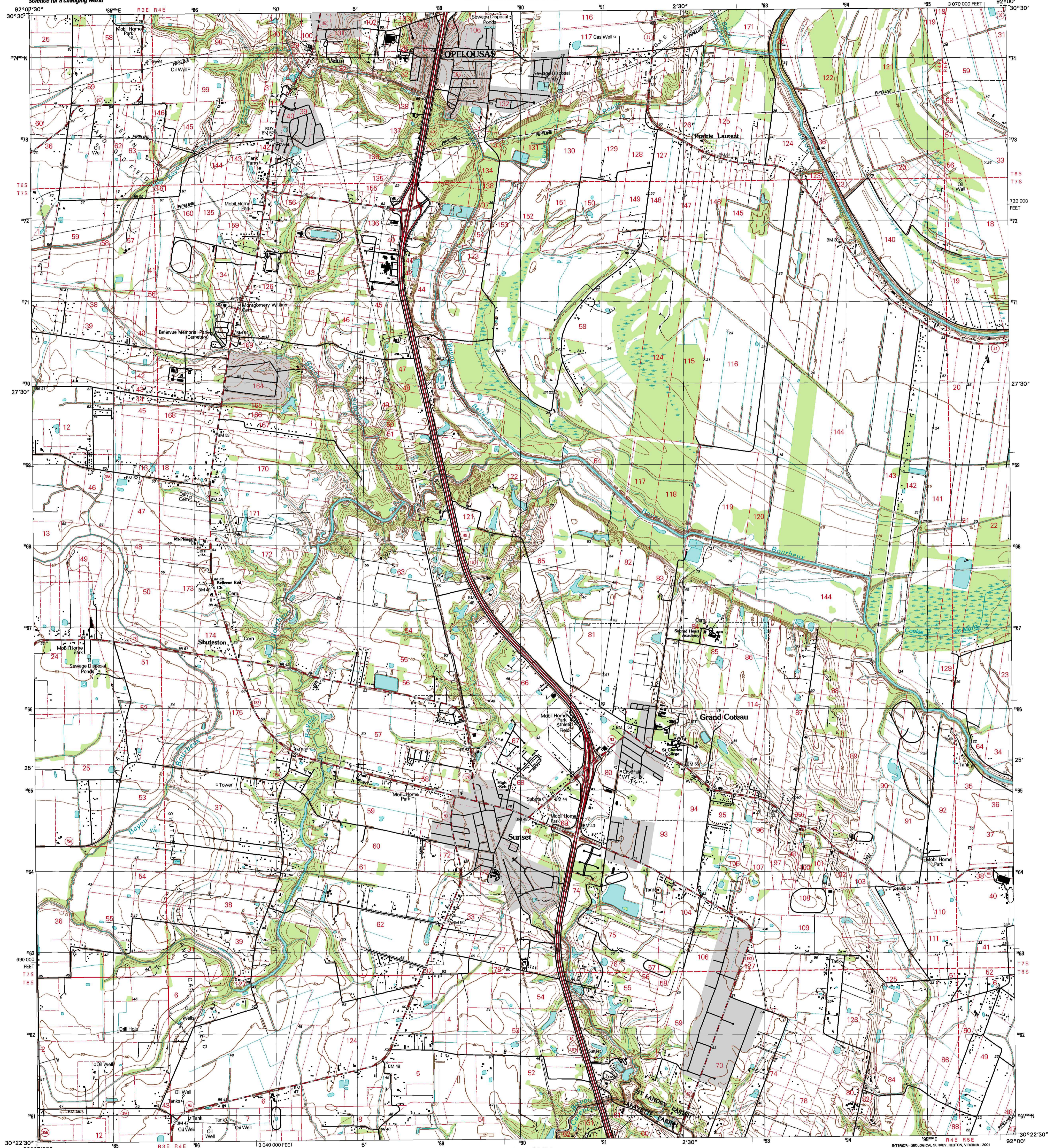


U.S. DEPARTMENT OF THE INTERIOR  
U.S. GEOLOGICAL SURVEY



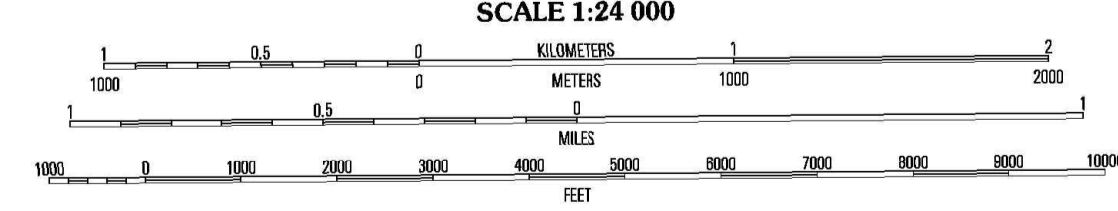
STATE OF LOUISIANA  
DEPARTMENT OF TRANSPORTATION AND DEVELOPMENT

SUNSET QUADRANGLE  
LOUISIANA  
7.5-MINUTE SERIES (TOPOGRAPHIC)



Produced by the United States Geological Survey  
in cooperation with Louisiana Department of  
Transportation and Development  
Topography compiled 1976. Planimetry derived from imagery  
taken 1998 and other sources. Public Land Survey System and  
survey control current as of 1982.  
North American Datum of 1983 (NAD 83). Projection and  
1:100,000-foot ticks: Louisiana Coordinate System of 1983 (south zone)  
North American Datum of 1927 (NAD 27) is shown by dashed  
corner ticks. The values of the shift between NAD 83 and  
NAD 27 for 7.5-minute intersections are obtainable from  
National Geographic Survey NADCON software  
Landmark buildings verified 1982

UTM GRID AND 2000 MAGNETIC NORTH  
DECLINATION AT CENTER OF SHEET



CONTOUR INTERVAL 5 FEET  
NATIONAL GEODETIC VERTICAL DATUM OF 1929  
TO CONVERT FROM FEET TO METERS, MULTIPLY BY 0.3048

THIS MAP COMPLIES WITH NATIONAL MAP ACCURACY STANDARDS  
FOR SALE BY U.S. GEOLOGICAL SURVEY, P.O. BOX 25286, DENVER, COLORADO 80225  
AND LOUISIANA DEPARTMENT OF TRANSPORTATION AND DEVELOPMENT, BATON ROUGE, LOUISIANA 70804  
A FOLDER DESCRIBING TOPOGRAPHIC MAPS AND SYMBOLS IS AVAILABLE ON REQUEST



ROAD CLASSIFICATION  
Primary highway hard surface .....  
Secondary highway hard surface .....  
Unimproved road .....  
Interstate Route U.S. Route State Route

1	2	3	1 Lowell
4	5	6	2 Opelousas
7	8	9	3 Port Barre
			4 Church Point
			5 Amnashelle
			6 Mite
			7 Carencro
			8 Breves Bridge

ADJOINING 7.5' QUADRANGLE NAMES  
LA 1673

SUNSET, LA  
1998  
NIMA 7544 1E-SERIES V885

