

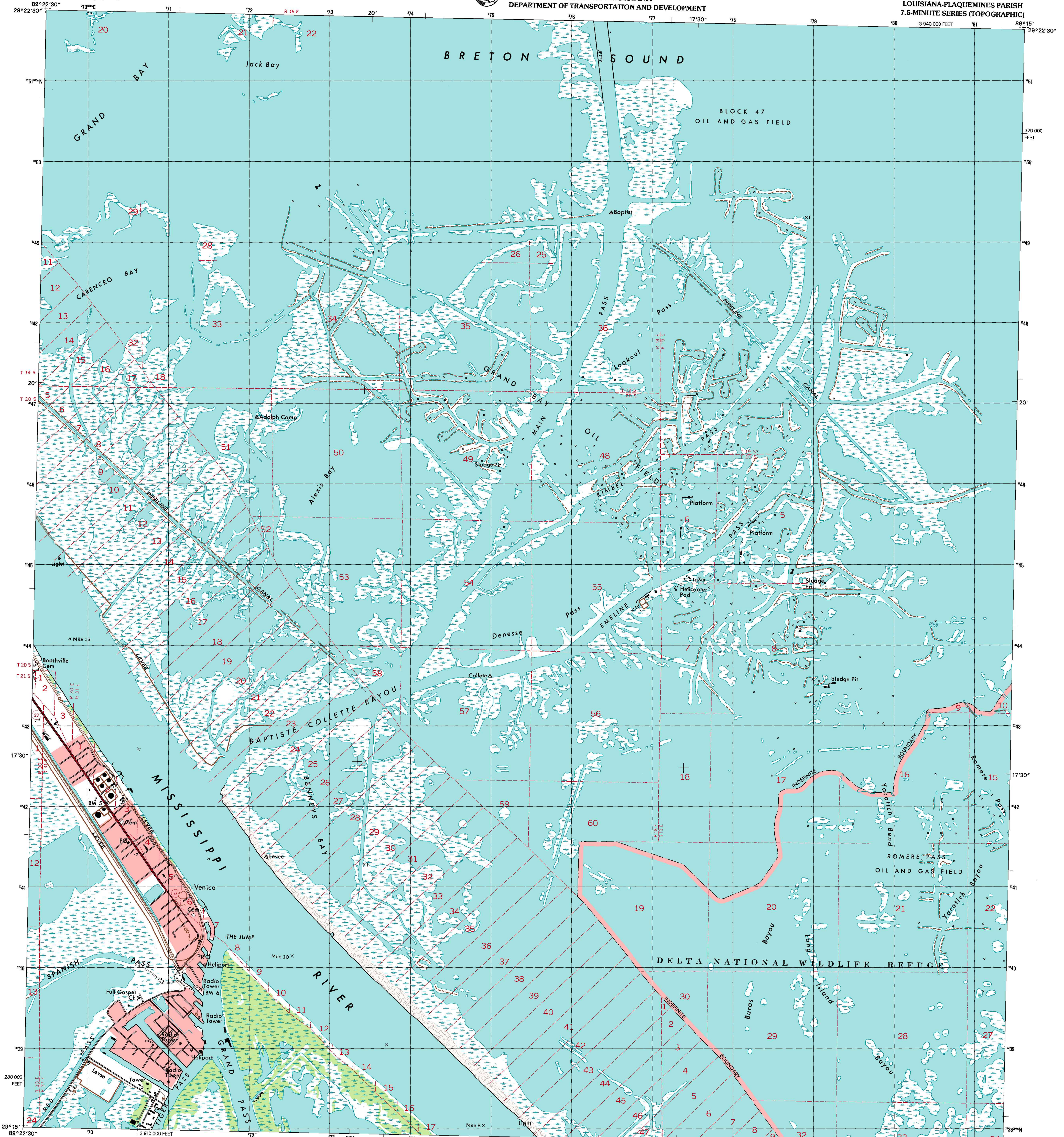


U.S. DEPARTMENT OF THE INTERIOR  
U.S. GEOLOGICAL SURVEY

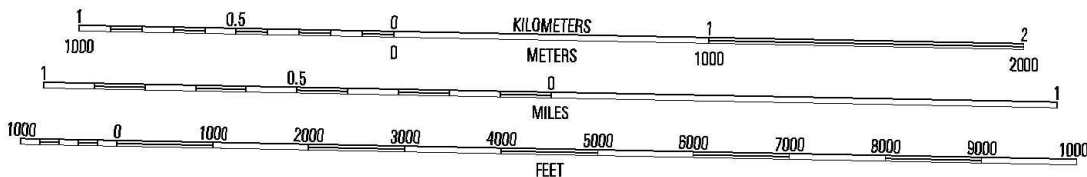
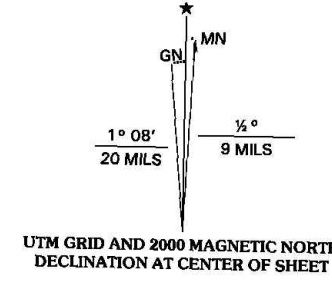


STATE OF LOUISIANA  
DEPARTMENT OF TRANSPORTATION AND DEVELOPMENT

VENICE QUADRANGLE  
LOUISIANA-PLAQUEMINES PARISH  
7.5-MINUTE SERIES (TOPOGRAPHIC)



Produced by the United States Geological Survey  
in cooperation with Louisiana Department of  
Transportation and Development  
Topography compiled 1971. Planimetry derived from imagery  
taken 1958 and other sources. Public Land Survey System and  
survey control current as of 1971.  
North American Datum of 1983 (NAD 83). Projection and  
1 000-meter grid: Universal Transverse Mercator, zone 16  
10 000-foot ticks: Louisiana Coordinate System of 1983 (south zone)  
North American Datum of 1927 (NAD 27) is shown by dashed  
corner ticks. The values of the shift between NAD 83 and  
NAD 27 for 7.5-minute intersections are obtainable from  
National Geodetic Survey NADCON software.  
There may be private inholdings within the boundaries of the  
National or State reservations shown on this map.  
This quadrangle covers a subsidence area.  
Where omitted, land lines have not been established or are not  
shown because of insufficient data.  
Landmark buildings verified 1971.



CONTOUR INTERVAL 5 FEET  
NATIONAL GEODETIC VERTICAL DATUM OF 1929  
TO CONVERT FROM FEET TO METERS, MULTIPLY BY 0.3048



ROAD CLASSIFICATION

Primary highway  
hard surface .....  
Secondary highway  
hard surface .....

Light-duty road, hard or  
improved surface .....

Unimproved road .....

Intestate Route U.S. Route State Route

1	2	3	1 Coquille Point
4	5	6	2 Taylor Pass
7	8	9	3 Breton Islands
			4 Triumph
			5 Main Pass
			6 Pass-Terre-Plaine
			7 Pilottown
			8 Pass A L'ouest West

THIS MAP COMPLIES WITH NATIONAL MAP ACCURACY STANDARDS  
FOR SALE BY U.S. GEOLOGICAL SURVEY, P. O. BOX 25286, DENVER, COLORADO 80225  
AND LOUISIANA DEPARTMENT OF TRANSPORTATION AND DEVELOPMENT, BATON ROUGE, LOUISIANA 70804  
A FOLDER DESCRIBING TOPOGRAPHIC MAPS AND SYMBOLS IS AVAILABLE ON REQUEST

VENICE, LA  
1998

NIMA 8142 IV SE-SERIES V885

