

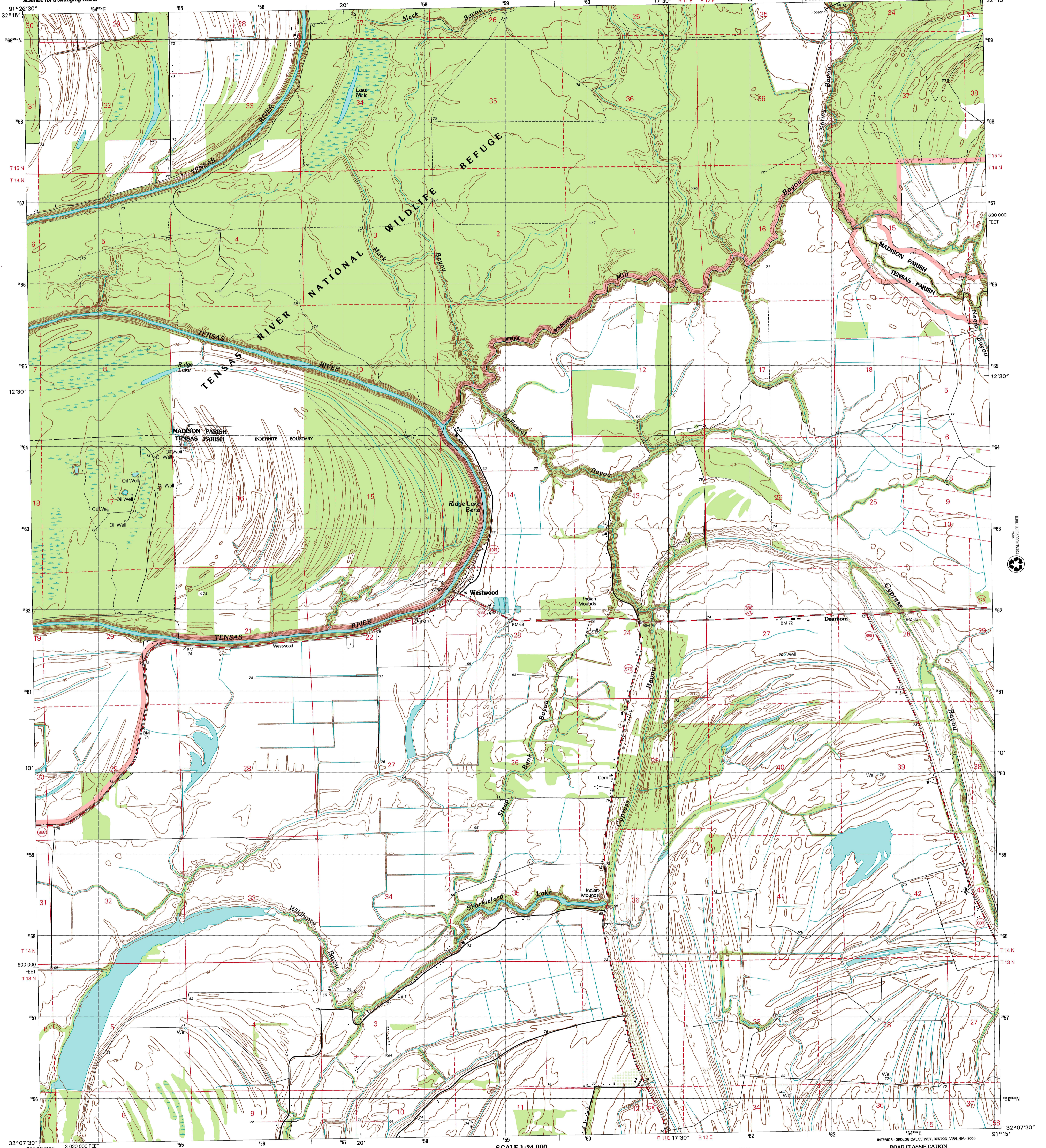


U.S. DEPARTMENT OF THE INTERIOR
U.S. GEOLOGICAL SURVEY

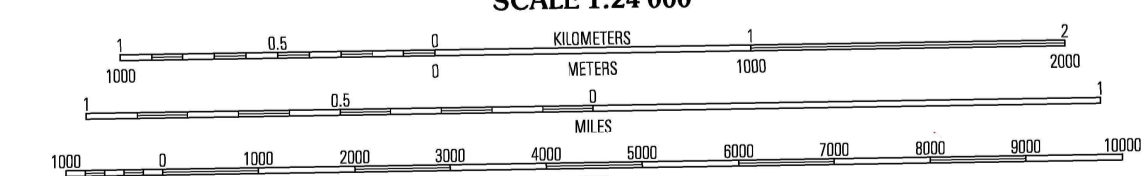
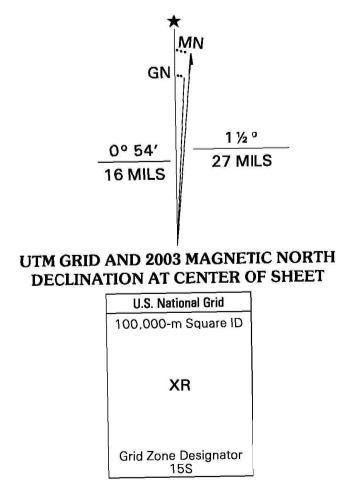


STATE OF LOUISIANA
DEPARTMENT OF TRANSPORTATION AND DEVELOPMENT

WESTWOOD QUADRANGLE
LOUISIANA
7.5-MINUTE SERIES (TOPOGRAPHIC)



Produced by the United States Geological Survey
Topography compiled 1982. Planimetry derived from imagery taken 1996 and other sources. Public Land Survey System and survey control current as of 1985. Boundaries current as of 2003.
North American Datum of 1983 (NAD 83). Projection and 1 000-meter grid: Universal Transverse Mercator, zone 15S 10 000-foot ticks: Louisiana Coordinate System of 1983 (north) zone
North American Datum of 1927 (NAD 27) is shown by dashed corner ticks. The values of the shift between NAD 83 and National Geodetic Survey NADCON software
There may be private inholdings within the boundaries of the National or State reservations shown on this map
Houses of worship, schools, and other labeled buildings verified 1985



CONTOUR INTERVAL 5 FEET
NATIONAL GEODETIC VERTICAL DATUM OF 1929
TO CONVERT FROM FEET TO METERS, MULTIPLY BY 0.3048

THIS MAP COMPLIES WITH NATIONAL MAP ACCURACY STANDARDS
FOR SALE BY U.S. GEOLOGICAL SURVEY, P.O. BOX 25286, DENVER, COLORADO 80225
AND LOUISIANA DEPARTMENT OF TRANSPORTATION AND DEVELOPMENT, BATON ROUGE, LOUISIANA 70804
A FOLDER DESCRIBING TOPOGRAPHIC MAPS AND SYMBOLS IS AVAILABLE ON REQUEST



QUADRANGLE LOCATION

1	2	3	1 Indian Lake
4	5	6	2 Waverly SE
7	8	9	3 Fomosa Fork
			4 Tensas Bluff
			5 Somerset
			6 Newlight
			7 Sanzac
			8 Newellton

ADJOINING 7.5' QUADRANGLES
LA 66B

ROAD CLASSIFICATION
Primary highway
hard surface
Secondary highway
hard surface
Unimproved road
Light-duty road, hard or
improved surface
Unimproved road

Interstate Route U.S. Route State Route

WESTWOOD, LA
1998

NIMA 7748 III NE-SERIES V885

