

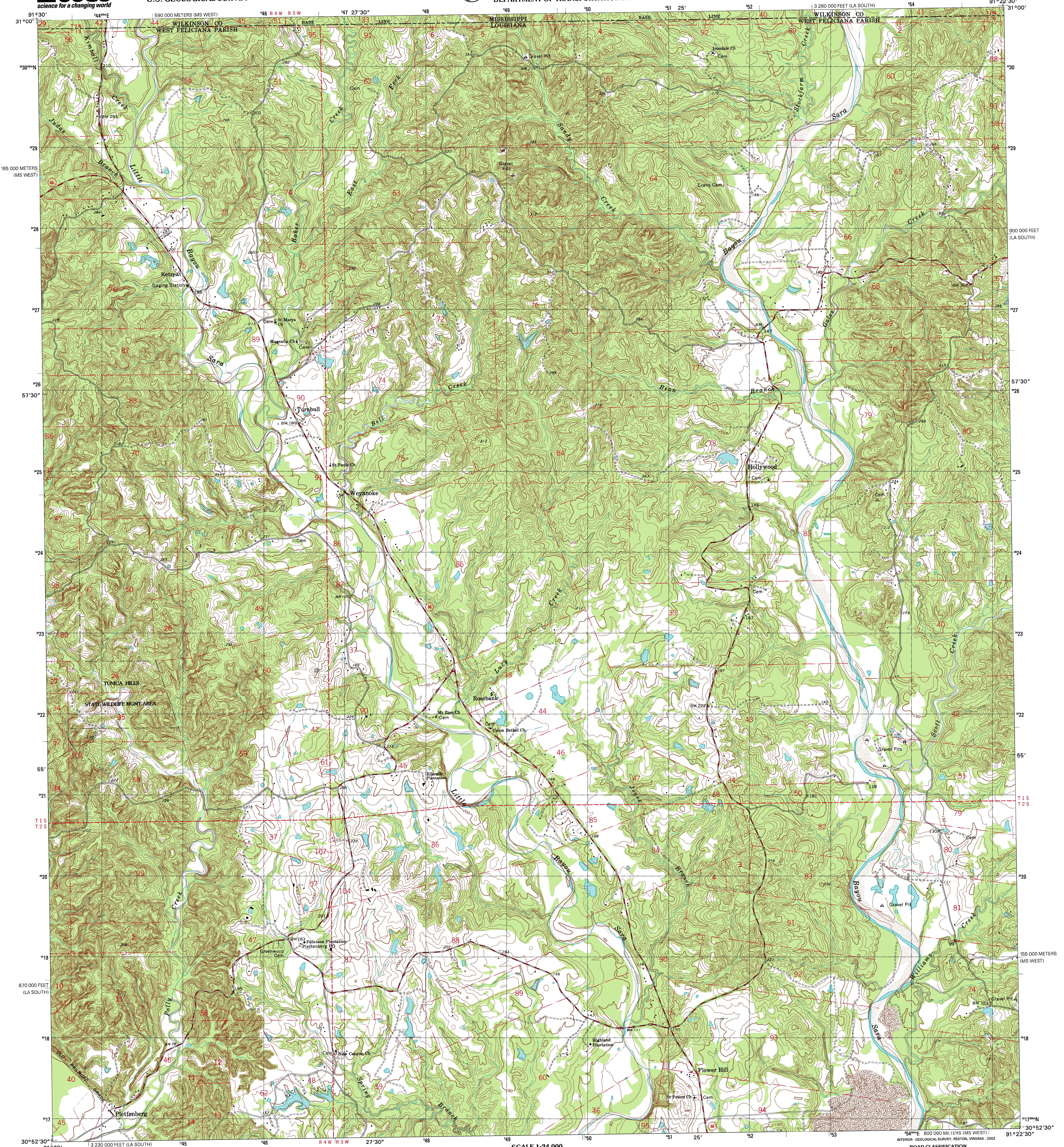


U.S. DEPARTMENT OF THE INTERIOR
U.S. GEOLOGICAL SURVEY

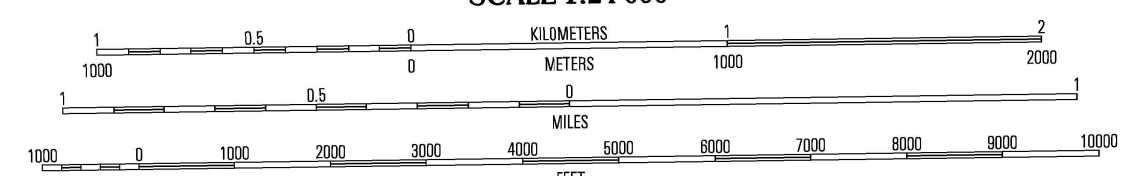
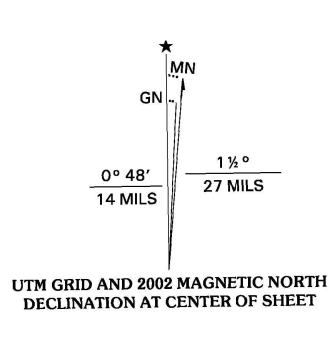


STATE OF LOUISIANA
DEPARTMENT OF TRANSPORTATION AND DEVELOPMENT

WEYANOKE QUADRANGLE
LOUISIANA-MISSISSIPPI
7.5-MINUTE SERIES (TOPOGRAPHIC)



Produced by the United States Geological Survey in cooperation with Louisiana Department of Transportation and Development
Topography compiled 1963. Planimetry derived from imagery taken 1998 and other sources. Public Land Survey System and survey control current as of 1965. Boundaries current as of 2002
North American Datum of 1983 (NAD 83). Projection and 1000-meter grid: Universal Transverse Mercator, zone 15 10 000-foot ticks: Louisiana Coordinate System of 1983 (south zone) 2500-meter ticks: Mississippi Coordinate System of 1983 (west zone)
North American Datum of 1927 (NAD 27) is shown by dashed corner ticks. The values of the shift between NAD 83 and NAD 27 for 7.5-minute intersections are obtainable from National Geodetic Survey NADCON software
There may be private inholdings within the boundaries of the National or State reservations shown on this map
Where omitted, land lines have not been established or are not shown because of insufficient data
Houses of worship, schools, and other labeled buildings verified 1965



CONTOUR INTERVAL 10 FEET
NATIONAL GEODETIC VERTICAL DATUM OF 1929
TO CONVERT FROM FEET TO METERS, MULTIPLY BY 0.3048

THIS MAP COMPLIES WITH NATIONAL MAP ACCURACY STANDARDS
FOR SALE BY U.S. GEOLOGICAL SURVEY, P.O. BOX 25286, DENVER, COLORADO 80225
AND LOUISIANA DEPARTMENT OF TRANSPORTATION AND DEVELOPMENT, BATON ROUGE, LOUISIANA 70804
A FOLDER DESCRIBING TOPOGRAPHIC MAPS AND SYMBOLS IS AVAILABLE ON REQUEST



QUADRANGLE LOCATION

ROAD CLASSIFICATION
Primary highway hard surface Light-duty road, hard or improved surface
Secondary highway hard surface Unimproved road
Interstate Route U.S. Route State Route

1	2	3
4	5	6
7	8	

1 Fort Adams
2 Pinckneyville
3 Woodville
4 Angole
5 Laurel Hill
6 Lander
7 Saint Francisville
8 Elm Park

WEYANOKE, LA-MS

1998

NIMA - SERIES V



ISBN 0-607-97866-1